



भारतीय प्रबंध संस्थान बेंगलूर
INDIAN INSTITUTE OF MANAGEMENT
BANGALORE

WELCOME TO IIMB





*“We build Leaders
and Entrepreneurs
through Holistic,
Transformative and
Innovative Education”*

Educational System in India

- Public and Private
- Universities and stand-alone institutions
- National Institutions: IIMs, IITs, IISc, NCBS, AIIMS, NID, NLS
- Mix of public funding and self-generation through
 - Research
 - Executive Education
 - Consultancy &
 - Public Philanthropy



Tejasvi Navadhitamastu

- The Indian Institute of Management Bangalore (IIMB) is a recognised hub of academic activity, both in India as well as globally
- IIMB is known for excellence in research and scholarship, global character, values, diversity and for the impact we make on multiple stakeholders and the society
- IIMB is guided by the philosophy of its Motto:

Tejasvi Navadhitamastu :

Let Study bring Enlightenment; Kathopanishad 2\6\19



History

- Established in 1973, IIMB is the third in the series of the IIMs set up by the Government of India
- IIMB is recognised as a leading international post-graduate centre of management studies, encompassing Education, Research & Consulting

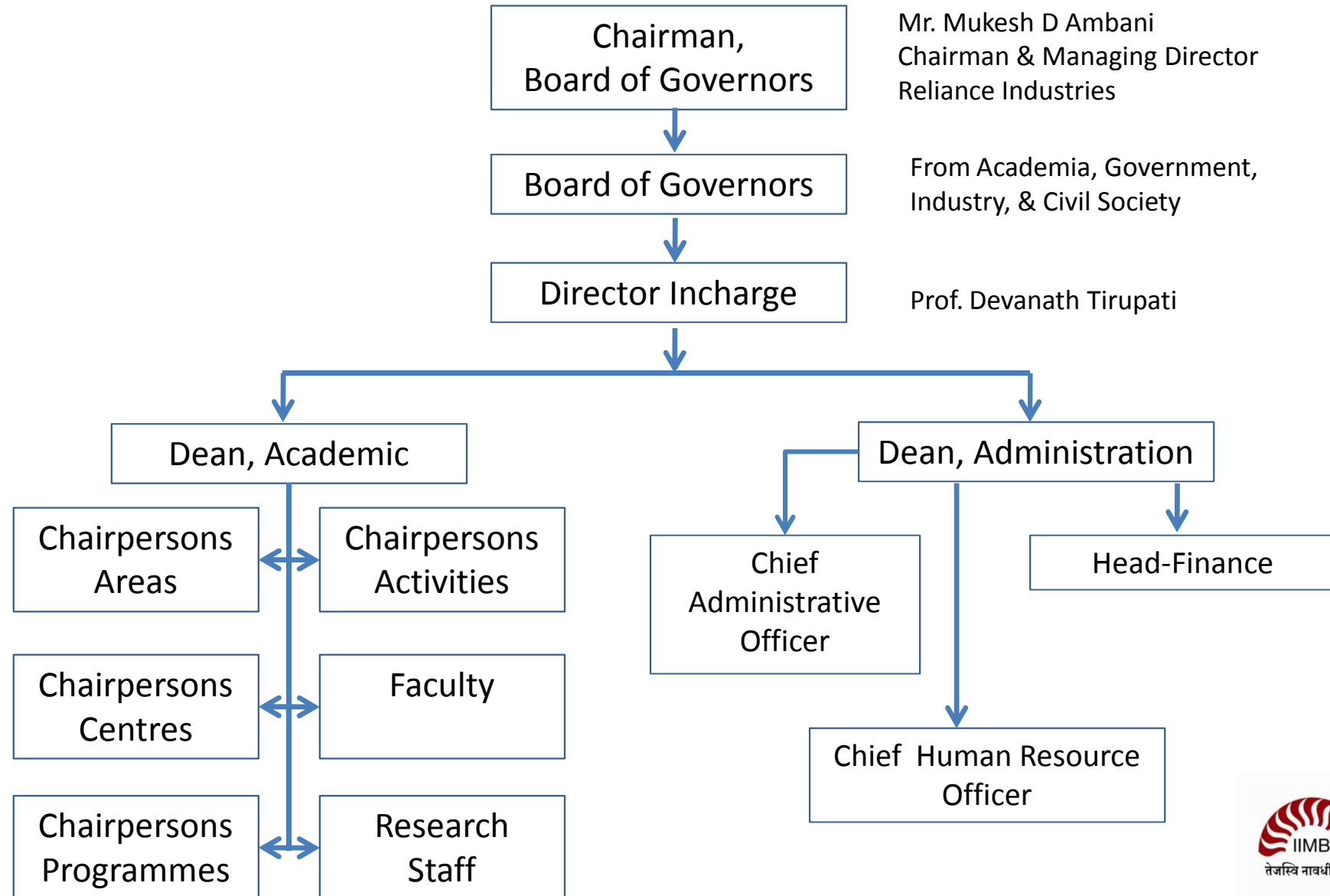


Governance & Structure

- Registered as a Society under the Mysore Societies Act, 1960, in 1972
- Formal inauguration on October 28, 1973
- Managed by a Board of Governors



Organisational Schematic



IIMB Academic Programmes

- Doctoral Programme:
 - Fellow Programme in Management (FPM)
- Post Graduate Diploma Programmes:
 - Post Graduate Programme in Management (PGP)
 - Post Graduate Programme in Software Enterprise Management (PGSEM)
 - Post Graduate Programme in Public Policy and Management (PGPPM); offered under the aegis of the Centre for Public Policy with the support from DOPT and UNDP
 - Executive Post Graduate Programme in Management (EPGP)

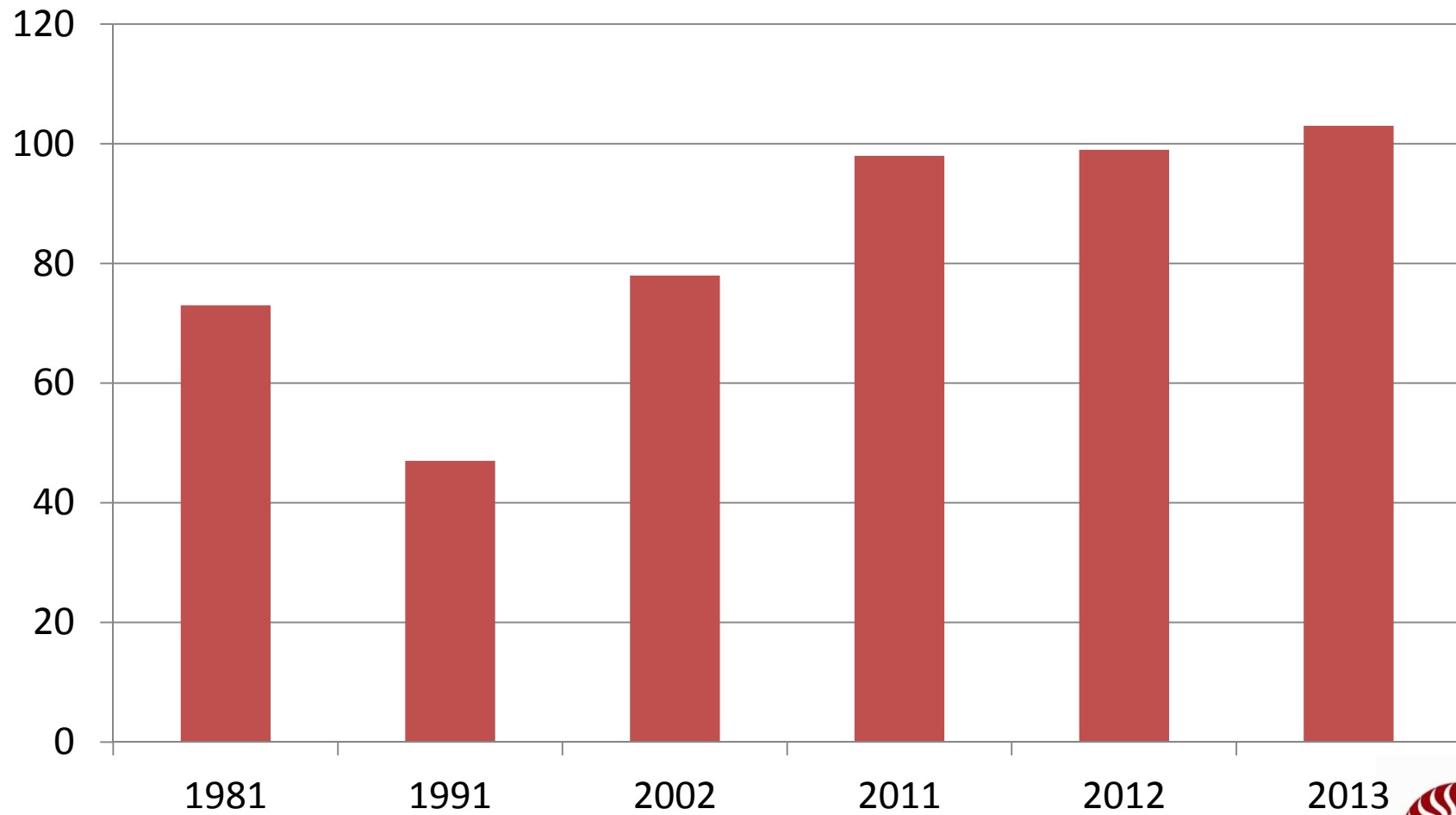


Faculty

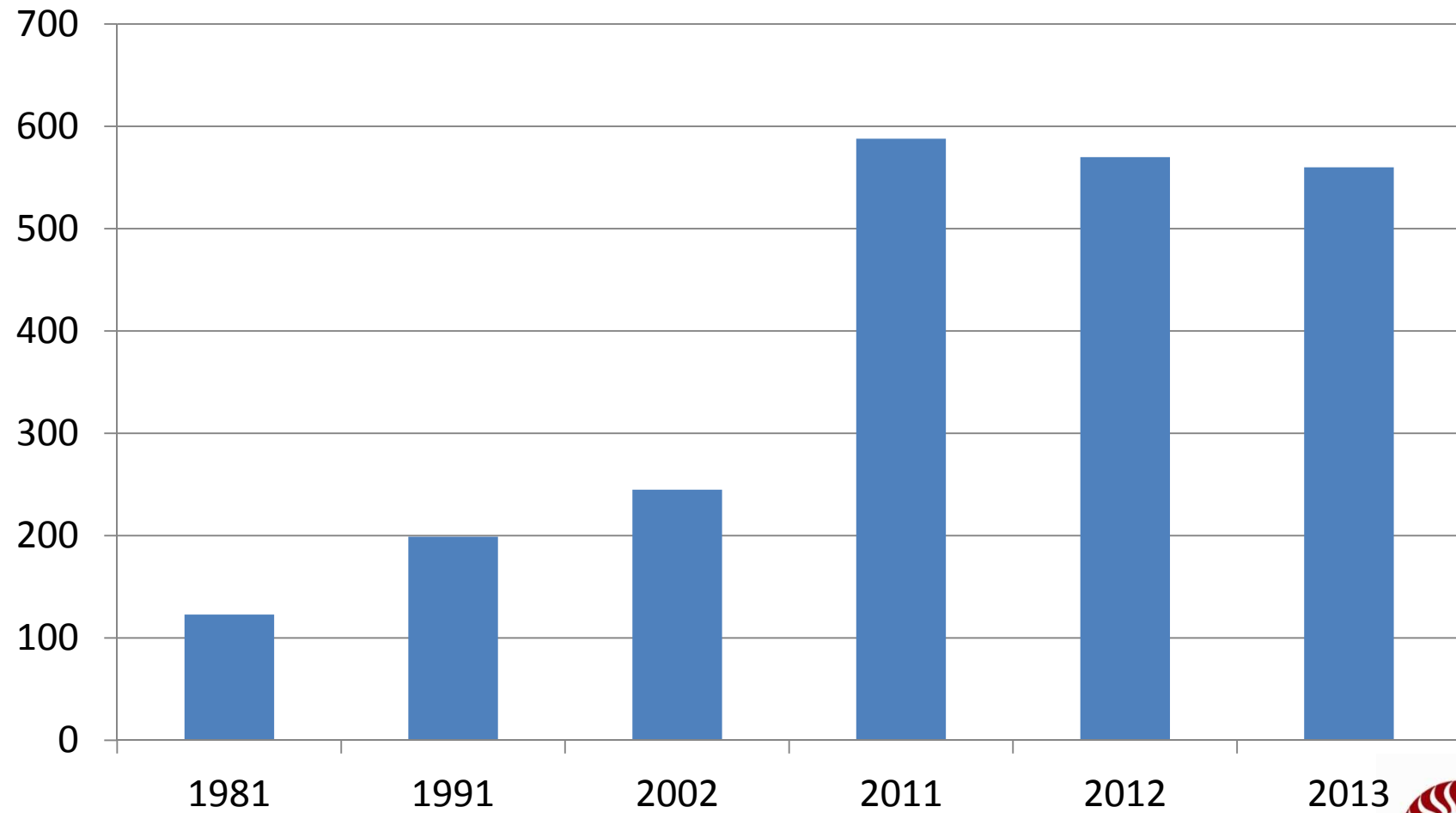
- 150+ faculty including visiting and adjunct professors
- Faculty have doctoral degrees from some of the most prestigious universities in the world
- IIMB faculty are actively engaged in policy formulation, research with industry, government & civil society, case writing and consulting



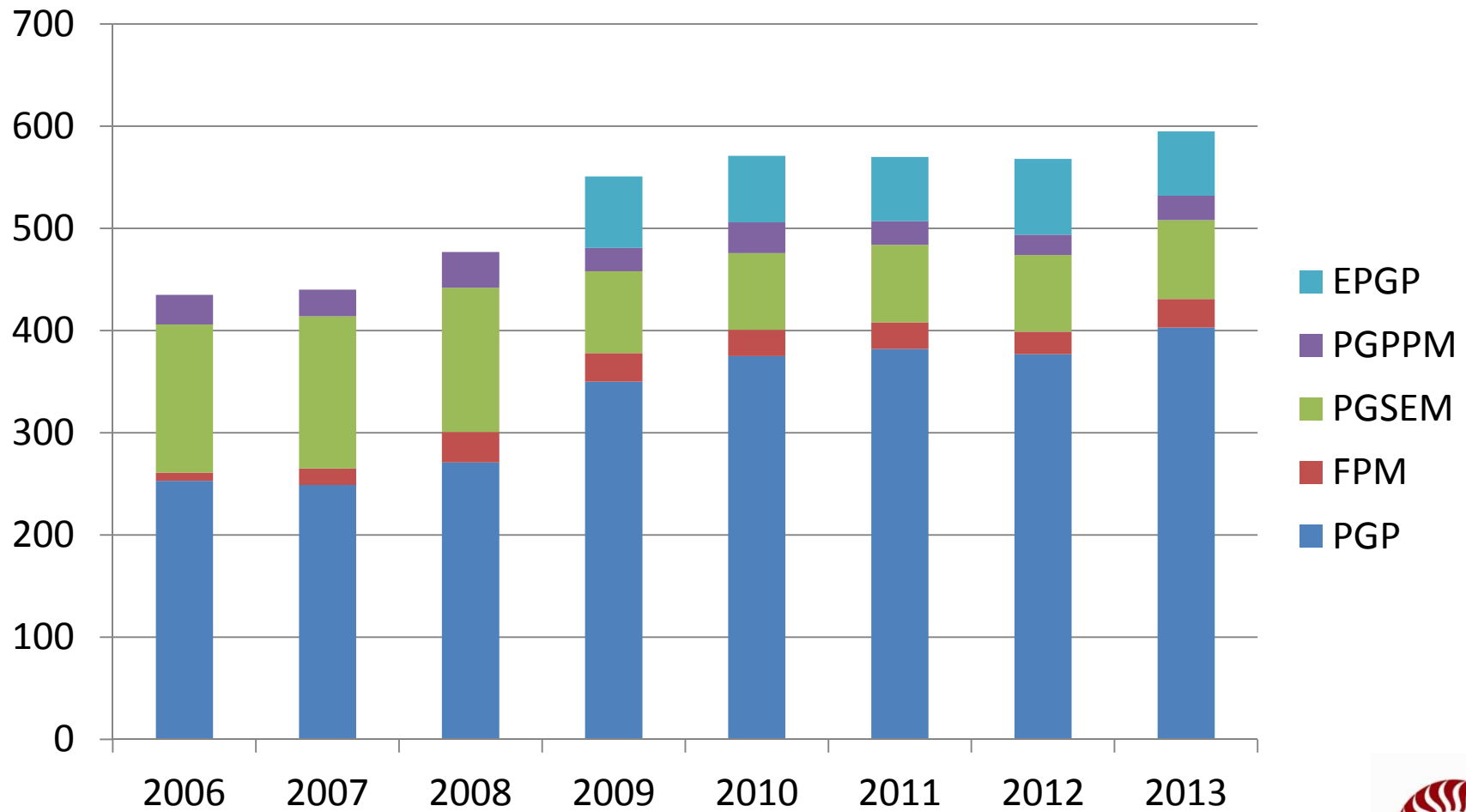
Full-time Faculty



Graduating Students



Student Intake



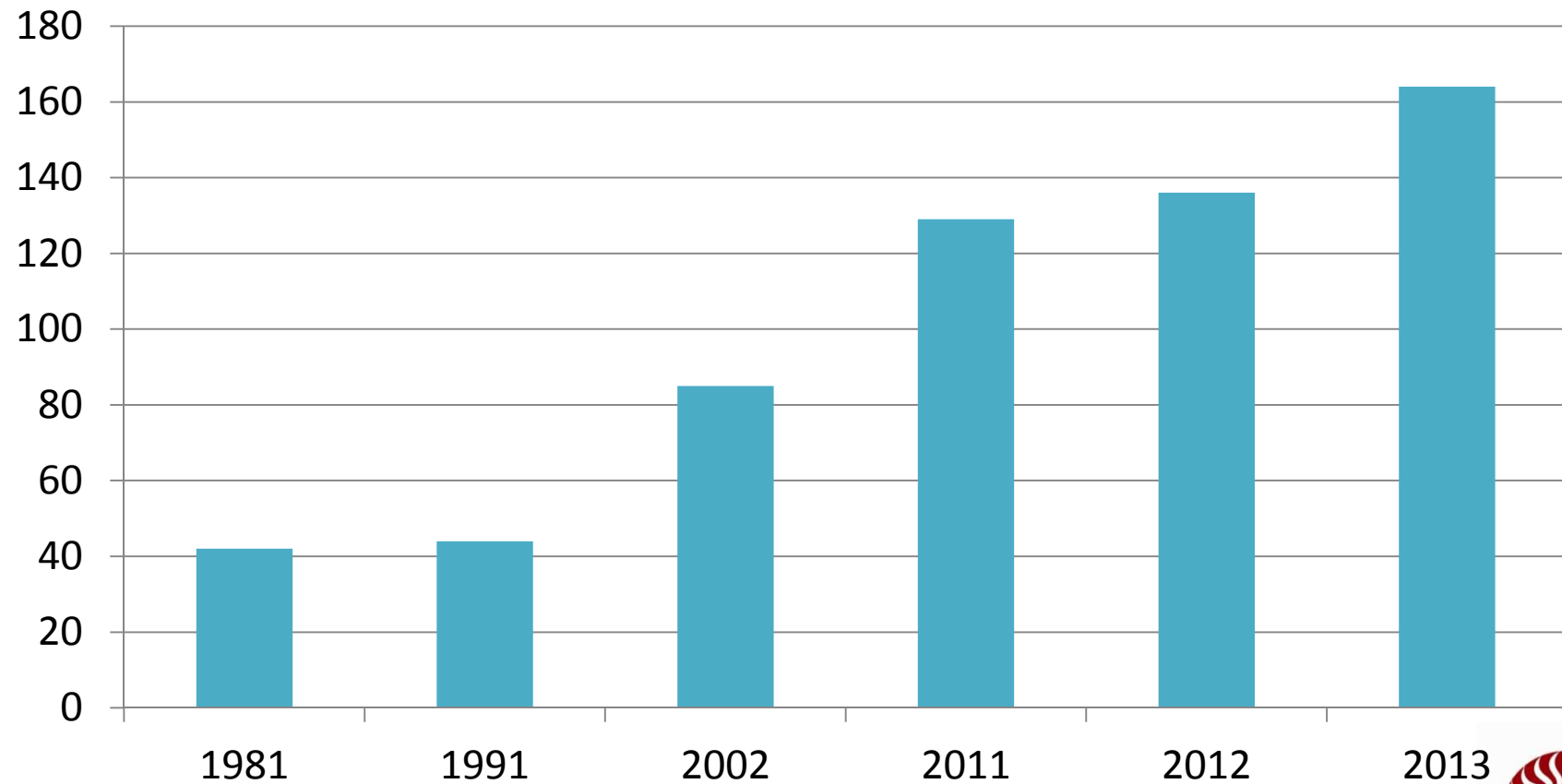
Executive Education & Entrepreneurial Learning

- International Programmes: IMPM; Doing Business in India
- Open Programmes
- Customized Programmes
- N S Raghavan Centre for Entrepreneurial Learning (NSRCEL) offers:
 - Management Programme for Entrepreneurs & Family Businesses
 - Management Programme for Women Entrepreneurs
 - Short-term courses in Marketing; Finance; Venture Capital; IPR; Negotiation skills



Executive Education Programmes

Academic Year

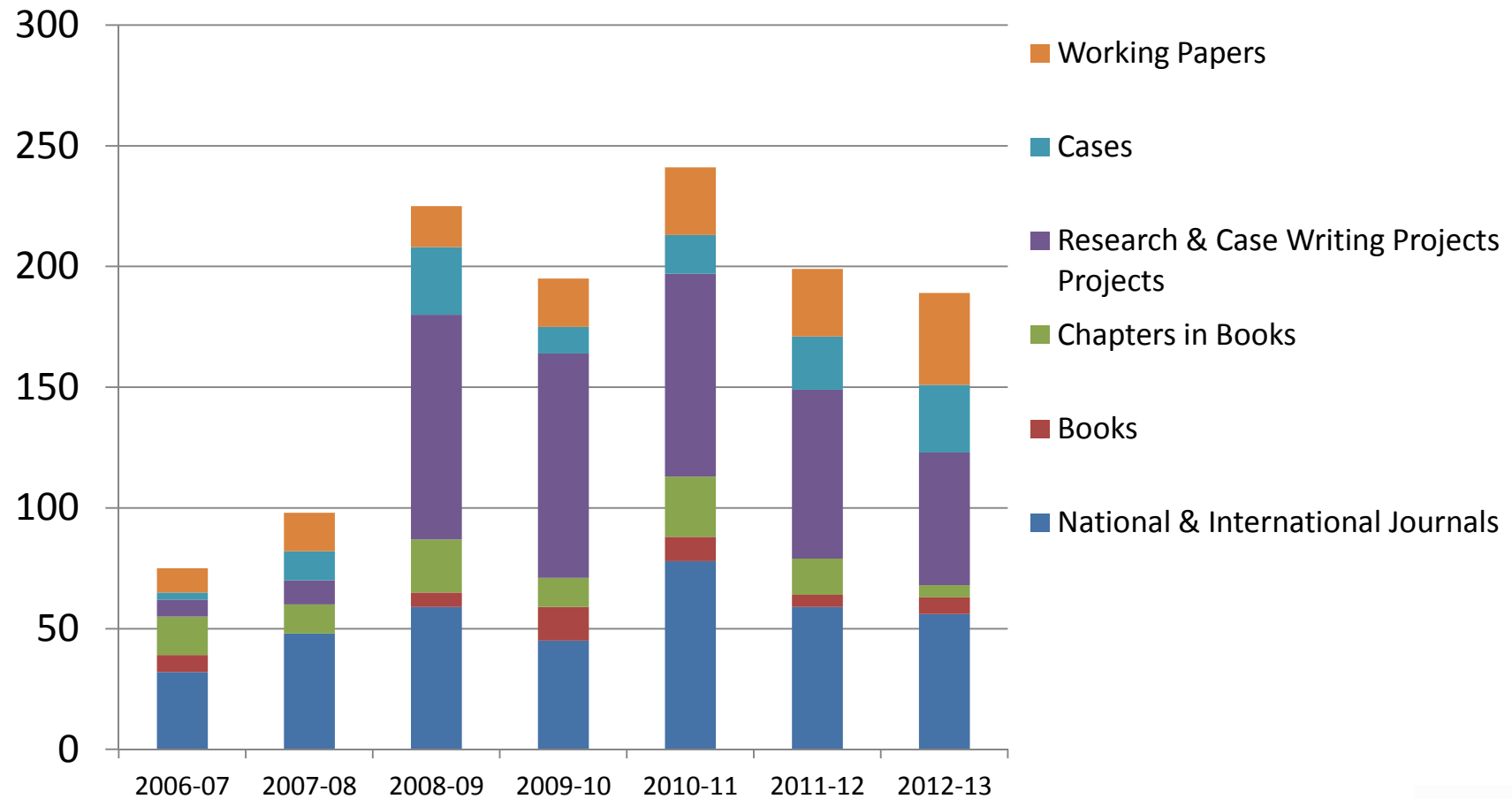


Research @ IIMB

- Conventional academic research + impactful practice-oriented research : focus on management in India & Emerging Markets
- Themes include:
 - Managerial issues facing firms/markets in emerging economies
 - Internationalization of Indian companies,
 - the 'Unorganized' Sector
 - Supply chain and logistics in uncertain environments
- Focused research Centres
- Emphasis on high quality publications – e.g. Math of OR, Management Science, AMR, SMJ, Research Policy, Journal of Financial Economics, World Development, California Management Review, etc.



Research and Publications



Research Centres

- Centre for **Public Policy**
- Nadathur S Raghavan
Centre for
**Entrepreneurial
Learning**
- Centre for **Financial
Markets & Risk
Management**
- Centre for **Corporate
Governance &
Citizenship**
- Centre for **Software & IT
Management**
- Centre for **Supply Chain
Management**
- Centre for **Enterprise
Resource Planning**



Some studies by the Centre for Public Policy

- *Role of Policy in Technology Improvement for Agricultural Growth*
- *Re-engineering India's Bio-safety Regulations*
- *Resource Mobilization Issues in Karnataka*
- *Excellence and Innovation in Government:*
- *Implementing Organisational Change*
- *Health and Environmental Risk Management in India*
- *Gender and Health Equity in Karnataka*
- *Comparative Study of Nationalized & Non-Nationalized Transport Sector*
- *Expiry of Peace Clause in WTO's Agriculture Agreement: Implications*

Endowed Chair Professorships

- Apeejay Surrendra Chair in Family Business and Entrepreneurship
- Canara Bank Chair in Banking & Finance
- EADS – SMI Endowed Chair for Sourcing & Supply Management
- Hewlett-Packard Chair in ICT for Sustainable Economic Development
- IIMB Chair Professor in Research
- IIMB Young Faculty Research Chair Professors
- Jamuna Raghavan Chair for Entrepreneurial Learning
- Ministry of Human Resource Development Chair on IPR
- RBI Chair



Partnerships

- International Masters Program in Practicing Management: IIMB in collaboration with McGill University, Montreal, Canada; University of Lancaster, U.K.; Renmin University of China and EBAPE, Brazil
- Harvard Publishing & Ivey School of Business
- University of Exeter
- Corporate Partners: Freudenberg, EADS, British Aerospace, Areva, National Development Bank, Sri Lanka
- IISc., NCBS, Pearson



Office of International Affairs

- Most comprehensive student exchange programme
- Associations with 108 globally renowned B-schools
 - London Business School, GSB Chicago, Cornell, Anderson School-UCLA, HEC Paris and others
- Summer Internships, International Business in Practice
- Global B-schools Interaction



Career Development

- IIMB students highly sought after
- Large number of international firms recruit on campus:
McKinsey & Co. , Boston Consulting Group, Deutsche Bank, Bain & Co.,
AT Kearney , Goldman Sachs , JP Morgan , Oliver Wyman, Barclays
Capital , ABN AMRO , Citigroup, Blackstone Group, Unilever, Tatas
- Evolving choice in sectors: Real Estate, Media
(Entertainment), and Lifestyle



Infrastructure

- Located in a picturesque 100-acre campus in South Bangalore
- Over 30 high-tech classes and seminar rooms
- Seating capacity : 1000 + building six more
- Video-conferencing classrooms
- Library with over 200,000 books and journals
- World class computing facilities including campus-wide Wi-Fi
- Management Development Centre: 120 room capacity
- Student Faculty & Staff housing on campus



International Recognition for IIMB

- **EQUIS Accreditation:** IIMB awarded with a three-year European Quality Improvement System (EQUIS) accreditation, introduced by the European Foundation for Management Education (EFMD). The accreditation is an indication that recognized Institutions satisfy international standards.
- **Eduniversal:** For the fourth consecutive year, IIMB ranked as number one business school in South & Central Asia by Eduniversal, Unit of French Consulting firm SMBG.
- **QS Report:** IIMB ranked fifth in the Asia-Pacific region in the QS Global 200 Business Schools Report 2012 published by Quacquarelli Symonds (QS).





Thank You!

Indian Institute of Management Bangalore
Bannerghatta Road, Bangalore – 560 076, INDIA

www.iimb.ernet.in

www.iimb.ac.in

