

2015

eduniversal
Ratings & Rankings



The Best 1,000 Business Schools Worldwide

Contacts

- ▶ **Martial GUIETTE**
CEO & Founder
martial.guiette@eduniversal.com
- ▶ **Cécile ESCAPE PEROCHAIN**
Associate - Managing Director
cecile.escape@eduniversal.com
Tel: +33 (0) 148 51 20 97/ Cell +: +33 (0) 674 341 989
- ▶ **Marie-Anne BINET**
Associate - Communications and Development Director
French Rankings Manager
marie-anne.binet@eduniversal.com
Tel: +33 (0) 148 51 21 01/ Cell +: +33 (0) 674 340 681
- ▶ **Véronique LANSOT-LOUSTEAU**
Associate - Financial and Administrative Services Director
veronique.lansot-lousteau@eduniversal.com
Tel: + 33 (0) 148 51 21 02 / Cell: +33 (0) 683 872 221
- ▶ **Marie-José SUEIRO**
International Partnership Director
marie-jose.sueiro@eduniversal.com
Tel: + 33 (0) 148 512 105 / Cell: + 33 (0) 674 341 720
- ▶ **Lyuba GANGULY**
International Partnership and Development Director
lyuba.ganguly@eduniversal.com
Tel: + 33 (0) 148 512 104 / Cell: + 33 (0) 674 341 017
- ▶ **Yanis AKKACHE**
International Advertising Sales Assistant
yanis.akkache@eduniversal.com
Tel: + 33 (0) 148 579 694 / Cell : + 33 (0) 684 025 196
- ▶ **Tatiana PODGORBUNTSCHIH**
International Event Project Manager
tatiana.podgorbuntschih@eduniversal.com
Tel: + 33 (0) 148 578 832
- ▶ **Asmik AYRAPETYAN**
Ranking Officer Best Masters
asmik.ayrapetyan@eduniversal.com
Tel: + 33 (0)148 510 759
- ▶ **Lucie BORTHWICK**
International Event Project Assistant
lucie.worthwivk@eduniversal.com
Tel: + 33 (0)148 510 759
- ▶ **Boy BRULLEMANS**
Ranking Officer
boy.brullemans@eduniversal.com
Tel: + 33 (0) 148 512 095 / Cell: + 33 (0) 629 890 300
- ▶ **Nicolas DUVAL**
Event Project Manager
nicolas.duval@eduniversal.com
Tel: + 33 (0) 148 512 092 / Cell: + 33 (0) 688 922 684
- ▶ **Vanessa REDUREAU**
Publishing and Press Manager
vanessa.redureau@eduniversal.com
Tel: +33 (0) 148 512 094
- ▶ **Julien FAURE**
Publishing and Press Manager
julien.faure@eduniversal.com
Tel: +33 (0) 148 512 103
- ▶ **Nathalia KAPFERER**
Publishing and Press Manager
nathalia.kapferer@eduniversal.com
Tel: +33 (0) 148 512 090
- ▶ **Navin CALEECHURN**
IT Director
navin.caleechurn@eduniversal.com
Tel: + 33 (0) 148 512 106 / Cell: + 33 (0) 630 280 400
- ▶ **Thibaut BRISSARD**
Web Manager
thibaut.brissart@eduniversal.com
Tel: + 33 (0) 148 512 093
- ▶ **Damien Boisseau**
Web Developer
damien.boisseau@eduniversal.com
Tel: +33 (0) 148 512 098
- ▶ **Merdy MOUANGA**
Graphic Designer
merdy.mouanga@eduniversal.com
- ▶ **Eléonore ESCAPE**
Student Adviser - Company Lawyer
eleonore.escape@eduniversal.com
Tel: +33 (0) 148 512 099 / Cell : +33 (0) 645 143 534
- ▶ **Amélie LAURENSOU**
HeadHunterSourcing Manager
amelie.laurenou@eduniversal.com
Tel: +33 (0) 148 575 764 / Cell : +33 (0) 648 554 965
- ▶ **Chloé KABLAN**
Student Recruitment Services - Advertising and Sales Director
c.kablan@media15-25.com
Tel: +33 (0) 148 577 879
- ▶ **Sarah VARDON**
Student Recruitment Services – Sales
s.vardon@media15-25.com
Tel : + 33 (0) 148 576 870
- ▶ **Jessica KORNGOLD**
Student Recruitment Services – Sales Assistant
s.vardon@media15-25.com
Tel : + 33 (0) 148 576 870

Message from the President of Eduniversal

Martial GUIETTE | CEO & Founder



“ Since the creation of Eduniversal, its mission has been to provide an in-depth view on academic expertise worldwide, to all stakeholders in higher education. The ultimate goal is to actively support international exchanges between schools, encourage mobility for professors and students and to assist HR professionals in identifying specialized talents. ”

Since 1994 Eduniversal Group, headquartered in Paris, has been expanding its services in accompanying students from their academic to their professional careers, to strengthen the expertise of the Eduniversal International Ranking Agency.

Eduniversal's primary ambition is to guide students from their undergraduate to their postgraduate studies and then through each stage of their career development. A whole generation of students is now referring to Eduniversal's expertise and knowledge on the Higher Education sector. Regardless of nationality, background or income, students are selecting from the best academic institutions over 154 countries (www.eduniversal-ranking.com) and/or the best postgraduate programs

worldwide (Master, MSc, MBA) in 30 different fields of study (www.best-masters.com), as ranked by Eduniversal.

In 2014, more than 4 million students used Eduniversal's websites to find information about the institution and/or the program in which they wished to enroll. So far in 2015, 5 million students have already trusted Eduniversal by using our websites as reliable tools when making their final decisions in pursuing their studies.

The criterion, which distinguishes the Eduniversal Business Schools Ranking (www.eduniversal-ranking.com) from most other international classification systems, is the Annual Deans' Vote Survey. In the 2015 survey, the Deans participation rate reached 67,3%, which included over 80% of the nationalities within the 154 countries represented by the Eduniversal Official Selection.

This year Eduniversal is once again expanding its development, with the introduction of a new innovative service, which manages online applications for students and schools : Eduniversal Booking.

As the first online universal platform for academic candidatures, this new tool allows students to simplify their approach to administrative tasks and at the same time choose which aspects of their training/ experience to display on a unique file.

Eduniversal booking allows candidates to benefit from up to date information on the expectations of education officials, concerning the relevant training for recruitment and the adequacy of their profile.

Eduniversal's new platform will also benefit schools by facilitating the process of narrowing down potential candidates by making the selection process more efficient.

Already available at Master level www.mastersbooking.com, will soon be joined by tools for other levels of study, such as Postgraduate (www.bachelorsbooking.com) and Executive education (www.mbabooking.com).

May this upcoming year continue to expand horizons of all those interested in the pursuit of truly excellent education!

Yours sincerely,

The Eduniversal International Scientific Committee

After months of investigations, the International Scientific Committee composed of 9 independent experts and 2 representatives of the Eduniversal Group, gathered on October 15th, 2007 in Paris and published the First Eduniversal Official Selection of the 1,000 Best Business Schools worldwide that covers 97 % of the global population representing 154 countries.



AFRICA

Prof. Sherif Kamel was founding dean of the School of Business at the American University in Cairo and professor of management information systems. He was director of the Regional IT Institute (1992-01) and managed the training department of the Cabinet of Egypt Information and Decision Support

Centre (1987- 92). He holds a PhD in Information Systems from London School of Economics and Political Science, an MBA and a BA in Business Administration from the American University in Cairo. He is a member of the World Bank Knowledge Advisory Commission, a board member of the American Chamber of Commerce in Egypt, the Association of African Business Schools and a number of NGOs supporting entrepreneurial education in Egypt including Injaz (Junior Achievement). He is a founding member of the Internet Society of Egypt. He served as Chairman of the Chevening Association in Egypt (2004-09).

CENTRAL ASIA

Prof. Dr. Aneeta Madhok (PhD, CMC, GPHR) is Managing Director at Open Spaces Consulting and has been the Dean (Center for Human Resources) at S.P. Jain Center of Management, Dubai and Singapore and Dean (School of Business) at NMIMS Deemed University in India. She has contributed to the consulting profession as Chairperson of the International Council of Management Consulting Institutes (ICMCI) (2009-2011) over 49 countries worldwide, and is a global expert on Professional Development and Knowledge in the areas of Management Education, Human Resources and Management Consulting.



EASTERN EUROPE

Dr. Virginijus Kundrotas is the Dean of Adizes Graduate School (USA) and Vice- President for West Europe and Baltics of Adizes Institute (USA). He was a Founding President of ISM University of Management & Economics (Lithuania) and worked in this position for 9 years. Specialized in business

ethics, leadership and change management, he is also President of BMDA (Baltic Management Development Association), vice-president of CEEMAN (Central and East European Management Development Association), and member of the EQUIS accreditation committee.

EURASIA & MIDDLE-EAST

Prof. Nehme Azoury is Professor and Dean at the Faculty of Business at USEK and holds the position of Secretary General of the Arab Society of Faculties of Business, Economics and Political Science, BEPS, (an affiliate of the Association of Arab Universities, itself founded by the League of Arab States). He lectures in the fields of marketing, strategy and Corporate Governance in several reputed universities namely, The Georges Washington University, which presented him with an appreciation award. As part of his research activities, he has to his credit several publications in internationally renowned scientific journals. To promote research in the Arab world, he is founder and editor of «The Arab Economic & Business Journal».

In addition, and beyond his academic and administrative activities, Nehme Azoury is currently Managing-partner at Widein, a consulting firm headquartered in Beirut.



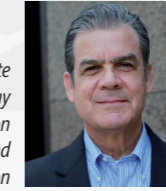
FAR EAST ASIA

Prof. Sung Joo Park is the former Dean and Vice president of KAIST (Korea Advanced Institute of Science and Technology). He is currently a professor at KAIST Business School. Holding a PhD from Michigan State University, he was also the founding president of AAPBS (Association of Asia-Pacific Business Schools), and served as a board member of the AACSB and the GFME (Global Foundation for Management Education).

Also, he served as an advisor to Samsung Group.

LATIN AMERICA

Prof. Edson Luiz Riccio is a well-established researcher and Associate Professor at the University of São Paulo (Brazil), where he holds many responsibilities, including: president of the international Cooperation Office of the faculty of economics and management (FEA-USP), and director of TECSI, a research laboratory on technology and information systems.



NORTH AMERICA AND MASTERS RANKING BRANCH

Prof. George M. JABBOUR is the Associate Dean for Executive Education, Professor of Finance, and Director of the Masters Finance Program at The George Washington University School of Business. He has been a consultant and conducting professional training for the World Bank Group in Washington DC (USA), Vienna (Austria) and Islamabad (Pakistan), for The International Training Banking Center in Budapest (Hungary), the Center of Excellence in Management in Kuwait, and for Kipco Asset Management Group (KAMCO) in Kuwait. He was a Visiting Professor at Franklin College in Lugano (Switzerland), Dongseo University (South Korea), Holy Spirit University-Kaslik, and Sorbonne University in Paris (France). He developed curriculum for BBA and Msc degrees in business and finance. He has several publications in professional refereed journals. He co-authored "The Option Trader Handbook" for trade adjustments. His research papers were presented in the US and around the world.

He has received several Teaching Excellence Awards. In addition to his academic career, Dr. Jabbour is very active in equity and derivatives trading. He was Senior Financial Analyst at Federal Home Loan Mortgage Corporation and a consultant to several American corporations and international organizations. He has a Ph.D. in Finance, an MBA in Finance, a BBA in Marketing, and BS in Mathematics.

OCEANIA

Prof. Michael Wood is currently Professor of Management in the School of Business at Notre Dame and the director of Mike Wood Consulting. He retired as Executive Dean of the Curtin Business School in May 2007, after nearly 8 years in the position. He has had extensive experience in the public and private sectors: he has worked in four Australian universities, held the most senior position in the public sector and profitably conducted his own business.

Professor Wood was formerly chair of the Wood Consulting Group and he has held leading positions in the Western Australian Public Sector. He was Public Service Commissioner from June 1990 to August 1993, Secretary for Local Government from 1984 to 1990, and Chairman of the Local Government Grants Commission from 1983 to 1985.



WESTERN EUROPE

Mr. Axel Schumacher is Associate Dean for International Relations at the Business and Law Schools of the EBS Universität für Wirtschaft und Recht (EBS University of Business and Law) in Oestrich-Winkel and Wiesbaden (Germany). Previously he was Director of International Programmes at WHU, Otto Beisheim School of Management (Germany).

He has been working in the field of International Relations for more than 25 years. Over this period he has initiated more than 300 university partnerships in 55 countries around the globe, including 50 dual degree agreements at the undergraduate and graduate levels. He has published research papers and contributed to books on the Concept of Private Universities in Germany and on Strategies of Internationalization for Business Schools.



Meeting of the International Scientific Committee in Paris (2007 and 2008), Cape Town (2009), Prague (2010), Cahors (2010), Beirut (2011), Shanghai (2011), Washington (2012), Lima (2012), Vietnam (2013), Bangalore (2013), Istanbul (2014) and Paris (2015).



Methodology

The Eduniversal Evaluation System (EES)

The **Eduniversal Evaluation System (EES)** includes the ranking and rating of two separate categories with two separate methodologies: first, the top 1000 global business schools, and second, the top 4000 Masters and MBA programs, both selected from 9 geographical zones and 154 countries.

The EES was created under the supervision of the **International Scientific Committee** composed of 9 independent expert members in each of the 9 geographical zones.

For more information about the International Scientific Committee, please visit: <http://www.eduniversal-ranking.com/methodology/committee>

1 Methodology of the 1000 Business Schools Ranking – A 3-Steps process



2 Methodology – The Official Selection of the Best 1,000 Business Schools

The methodology behind the selection of the 1,000 Business Schools to be ranked was created by the **Eduniversal** International Scientific Committee in 2007. Their objective was to establish a global mapping system that would take into account the international influence and reputation of each academic institution.

For the ranking of top 1,000 business schools, the system determines, from thousands of different

Business Schools, which 1,000 will be selected for the ranking. These schools are then classified in each country by **Palmes of Excellence** according to a set of criteria designed to determine a school's international influence, reputation and quality.

After the **Palme of Excellence** classification (from 1 to 5) has been set, an international Deans Vote determines the rank within each Palme category. The final ■■■

■■■ ranking shows, within each Palme category, the best business schools in each country.

The **Eduniversal** ranking highlights the best academic opportunities for students around the world in these 9 zones:

- Africa
- Western Europe
- Far East Asia
- Latin America
- Eurasia & the Middle East
- Central Asia
- North America
- Oceania
- Eastern Europe

The number of schools selected to take part in the ranking, from each of the 154 countries, is determined according to a quota method using both quantitative and qualitative criteria.

The quantitative criteria includes:

- the national expenditure on education per inhabitant
- the GDP per inhabitant
- the size of the population
- the number of students in higher education

The qualitative criteria includes:

- the number of graduate academic institutions in the country
- the historical importance of the national educational tradition.

Example of the data taken into consideration, according to the method of quotas, in the determination of the number of schools per country in the **Eduniversal** Official Selection:

Country	National Expenditure on education per inhabitant	GDP per inhabitant	Population size in million	Number of students in Higher Education	Schools Quota results
USA	\$2,851.20	\$ 52,800	317	19,600,000	153
India	\$128	\$ 4,000	1,210	28,560,000	50
China	\$421.40	\$ 9,800	1,347	24,000,000	54
UK	\$2,312.60	\$ 37,300	62	2,340,275	50
Mexico	\$811.20	\$ 15,600	112	1,481,999	16
Poland	\$1,097.20	\$ 21,100	38	2,146,926	12
Netherlands	\$2,442.60	\$ 41,400	16	546,400	12
Turkey	\$397.80	\$ 15,300	74	877,000	8
Tunisia	\$613.80	\$ 9,900	10	365,000	4
Australia	\$2408	\$ 43,000	22	1,200,000	35
Indonesia	\$145.6	\$ 5,200	237	4,200,000	7
Russia	\$705.9	\$ 18,100	143	9,330,115	19

Figure 1: Example of the data taken into consideration, according to the method of quotas, in the determination of the number of schools per country in the EDUNIVERSAL Official Selection.

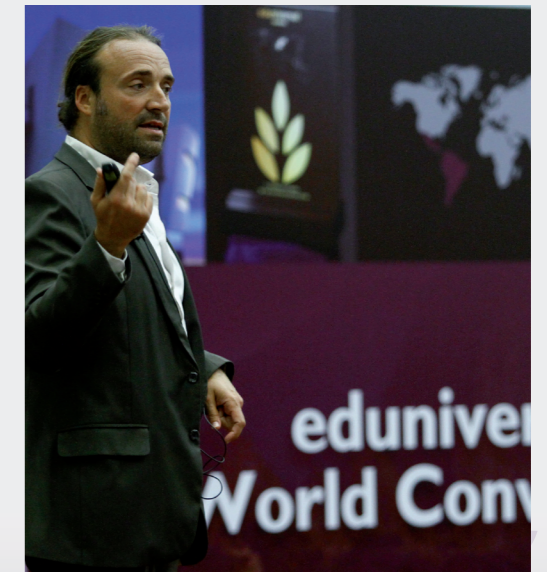
Evolution of the Eduniversal official selection of the Best Business School

The list is reviewed, taking into account the evolution of the business education in each country, by the **Eduniversal** International Scientific Committee every year. Schools that have not benefited from any Dean's recommendation (=0%), merged with other academic institutions or stopped their academic activity are deleted from the list.

Schools that wish to enter the **Eduniversal** Official Selection should apply for the evaluation process and fill out the evaluation form. Participation is free of charge.

For more information about the evaluation process for the schools candidates, please contact: international.coordinator@eduniversal.com

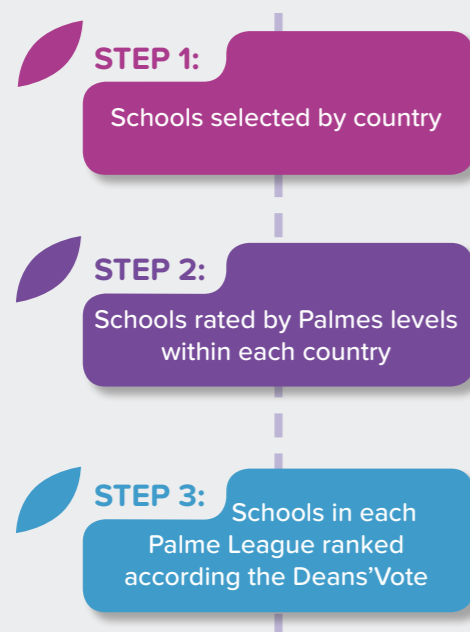
www.eduniversal-ranking.com/methodology/palms



3 Methodology – Eduniversal Rating : Palmes of Excellence

The Eduniversal system rates schools according to the international reputation of a school at national and global levels, and by geographical zone. After the 1,000 best business schools in 154 countries have been selected, they are divided within each country into one of the five Palme leagues.

Eduniversal Evaluation System (EES): a 3-step process to establish a Business Schools ranking in each of the 154 countries



There are five leagues of **Palmes of Excellence**. A Palme level is awarded to each school based on a set of internationalization criteria developed by the International Scientific Committee. These schools are then ranked within each Palme level according to the assessment made by peers: The Deans vote.

The Internationalization criteria includes:

- Accreditations
- Major rankings of business schools;
- Membership in international and national academic associations

Division of the schools into the five Palme of Excellence leagues allows for a horizontal comparison within 9 zones, which is different from the vertical comparison established by most of the international ranking systems. The Eduniversal Ranking System does not compare, for example, schools in one country to another country. Rather, it simply ranks the best schools within each country and within each Palme league.

The Palme leagues are divided as followed:

100 schools in the 5 Palmes league		Universal Business School with strong global influence
200 schools in the 4 Palmes league		Top Business School with significant international influence
400 schools in the 3 Palmes league		Excellent Business School with reinforcing international influence
200 schools in the 2 Palmes league		Good Business School with strong regional influence
100 schools in the 1 Palme league		Business School with considerable local influence

League changes

Upwards:

The process for changing a school's Palmes League can be initiated either:

- **by the Eduniversal Evaluation System (EES)**, through analysis of the Deans' Vote results, *for example if a school with 4 Palmes gets a significantly increased number of votes over a number of years and shows a positive difference between it and the schools listed before and behind it.*
- **by a school itself** which considers that it has sufficient reasons to change to a higher Palmes league. If a school has undergone, or is undergoing, significant changes (international and national accreditations, recognitions and distinctions, major developments and acquisition of new entities, institutes, high calibre projects for innovation, etc.), this school can submit a request by presenting its case to the International Scientific Committee. The Scientific Committee will assess the file with respect to all the criteria that lead to the award of Palmes.

Stages of the re-evaluation process:

The request file for promotion to the league above should be completed and sent along with the scanned copies of the official documents to : international.coordinator@eduniversal.com

It will be transferred to the member of the Scientific Committee (ISC) for the geographical zone of the School candidate and to the Board of Directors of Eduniversal. If request is approved, it will then be submitted for ■■■

■■■ further approval by the rest of the ISC.

School candidate will receive a reply regarding the outcome following the next Eduniversal World Convention. In the case of refusal, the ISC will explain the grounds for refusal and convey its recommendations for that school's future candidacy.

The re-evaluation process is free of charge.

Downwards:

The International Scientific Committee studies proposals for relegation put forward by one of the executive members of the Scientific Committee on the basis of the results of the Deans' vote during the preceding year.

<http://www.eduniversal-ranking.com/methodology/dean>

4 Methodology – Eduniversal Ranking : Deans' Vote

The Deans' Vote is the final element to the ranking system which determines the rank of a school within each Palme league. All schools included in the Official Selection are reviewed by their academic peers (from the 1,000 schools selected) and a maximum of 50% of the schools in each country can be included in the vote.

Each Dean or Director (only one vote per institution) assesses the schools in each country. Each Dean has the opportunity to submit a vote for schools in each of the geographical zones with which they are familiar. These votes are treated with utmost confidentiality.

Each year, the ranking of the top 1,000 business schools changes according to the results of the Deans' Vote. This vote determines the recommendation score and ranking order of schools within each country and in each Palme league.

The annual results are disclosed during the Eduniversal World Convention and published on www.eduniversal-ranking.com

For more information about the Deans' vote : www.eduniversal-deans-vote.com

5 Methodology – International Rankings, main International Accreditations and Academic Associations considered in the Eduniversal Business Schools Ranking Methodology

List of the International Rankings, main International Accreditations and Academic Associations taken into account for the evaluation and the grading of the Schools from the Eduniversal Official Selection.

► Main International Rankings

- All India Management Association Rankings
- All India Management Association (AIMA)
- AméricaEconomía Rankings
- Asiaweek Ranking
- Braintrack University index
- Business India Rankings
- Business Today ranking (India)
- Business Week B-School ranking
- Business Week EMBA ranking
- Business Week Full-time MBA ranking
- Business World India Ranking
- CareerDynamo Ranking
- CHE Ranking (Germany)
- El Mundo Full-time MBA Ranking (Spain)
- El Mundo mejores universidades (Spain)
- El Mundo Ranking (Spain)
- Financial Times Global MBA Ranking
- Financial Times Ranking for European Masters in Management
- Financial Times Ranking for the best European Business Schools

- Financial Times Ranking in Executive Education
- Forbes best business schools ranking
- Handelsblatt top-25 Ranking (Germany)
- Huazhong University of Science & Technology International Exchange Center ranking of Top 20 Japanese universities (Japan)
- International America Economia Rankings
- L'Étudiant Écoles de commerce masterisées
- Le Figaro Meilleures écoles de commerce
- Le Point rankings (France)
- Los mejores programas de maestrías empresariales CLARIN - IECO
- MBA International Business Ranking
- Mines Paris ranking
- Netbig's Chinese University Ranking in Finance & Economy
- Nikkei Sangyo Rankings
- Outlook India Ranking
- Princeton Review overall ranking
- QS Survey (Top 20/40 by geographical zone)
- Shanghai Jiao Tong ranking
- Shanghai Jiao Tong ranking in Social Sciences
- SMBG Ranking - Guide Jaune (France)

- The Beyond Grey Pinstripes rankings of the Aspen Institute
- The Economist Intelligence Unit
- The Times Good Universities Guide (U.K.)
- Times Higher Education Supplement Ranking
- Unicorn Research Corp. MBA Guide
- US News Ranking
- Você s/a melhores escolas de negocios (Brazil)
- Wall Street Journal international MBA ranking
- Webometrics Ranking of World Universities
- Whitefield Consulting Worldwide Rankings for Executive MBA
- Whitefield Consulting Worldwide Rankings for global MBA
- Wirtschafts Woche Rankings (Germany)
- World Bank ranking of Russian B-schools
- WPROST Magazine Ranking (Poland)
- www.find-mba.com
- www.foreignmba.com
- www.mba.org.cn (China)
- www.universia.net

► Main International Accreditations

- Association of MBAs
- Central and East European Management Development Association
- EPAS Accredited by the EFMD
- EQUIS Accredited by the EFMD
- European Council for Business Education
- Foundation for International Business Administration Accreditation (Germany)
- Middle States Commission on Higher Education
- New England Association of Schools & Colleges
- The Association to Advance Collegiate Schools of Business (AACSB) Accreditation
- The Commission on Colleges of the Southern Association of Colleges and Schools
- The Higher Learning Commission
- The International Assembly for Collegiate Business Education (IACBE)
- The Northwest Commission on Colleges and Universities (NWCCU)
- Western Association of Schools and Colleges (WASC)

► Main Associations Africa



- Academic Council on the United Nations System (ACUNS)
- African Association of Business Schools (AABS)
- Agence Universitaire de la francophonie (AUF)
- Arab Association of the Faculties of Business Administration (AAFBA)
- Association of African Universities (AAU)
- Association of Arab Universities (AARU)
- Association of Collegiate Business Schools and Programs (ACBSP)
- Association of Commonwealth Universities
- Association of MBAs
- Conférence des Recteurs des Universités Francophones d'Afrique et d'Océan Indien
- Egyptian Universities Network (Egypt)
- European Foundation for Management Development (EFMD)
- Federation of the Universities of the Islamic World
- Global Business School Network
- International Association of Jesuit Business Schools
- International Association of Universities
- Partnership in International Management
- South African Business Schools Association (SABSA)
- The Association to Advance Collegiate Schools of Business (AACSB)

► Main Associations Central Asia



- Academic Council on the United Nations System (ACUNS)
- Association of Asia-Pacific Business Schools (AAPBS)
- Association of Collegiate Business Schools and Programs (ACBSP)
- Association of MBAs
- European Foundation for Management Development (EFMD)
- Federation of the Universities of the Islamic World
- Global Business School Network
- International Association of Jesuit Business Schools
- International Association of Universities
- National Assessment and Accreditation Council
- National Board of Accreditation (NBA)
- Partnership in International Management
- Student In Free Enterprise (SIFE)
- The Alliance of Business Education and Scholarship for Tomorrow (ABEST21)
- The Association of Indian Management Schools (AIMS)
- The Association to Advance Collegiate Schools of Business (AACSB)
- Ukrainian Association for Management Development of Business Education
- University Grant Commission (UGC)

► Main Associations Eastern Europe



- Academic Council on the United Nations System (ACUNS)
- Agence Universitaire de la Francophonie (AUF)
- Association of Collegiate Business Schools and Programs (ACBSP)
- Association of Economic Universities of South and Eastern Europe and the Black Sea Region
- Association of MBAs
- Balkan Universities Network
- Baltic Management Development Association
- Black Sea University Network
- Central and East European Management Development Association (CEEMAN)
- European Academy of Business in Society
- European Foundation for Management Development (EFMD)
- European University Association
- European University Continuing Education Network
- Global Business School Network
- International Association of Jesuit Business Schools
- International Association of Universities
- Partnership in International Management
- Russian Association of Business Education

- The Association of the Carpathian Region Universities (ACRU)
- The Association to Advance Collegiate Schools of Business (AACSB)
- The International Assembly for Collegiate Business Education (IACBE)
- The network of Institutes and schools of public administration in Central and Eastern Europe
- The Network of International Business & Economic School (NIBES)
- Ukrainian Association for Management Development of Business Education

► Main Associations Eurasia & Middle-East



- Academic Council on the United Nations System (ACUNS)
- Agence Universitaire de la Francophonie (AUF)
- Arab Association of the Faculties of Business Administration (AAFBA)
- Arab Quality Assurance and Accreditation Network for Education - ARQAANE
- Association of Arab Universities (AARU)
- Association of Collegiate Business Schools and Programs (ACBSP)
- Association of MBAs
- European Foundation for Management Development (EFMD)
- Global Business School Network
- International Association of Jesuit Business Schools
- International Association of Universities
- Partnership in International Management
- The Association to Advance Collegiate Schools of Business (AACSB)

► Main Associations Far East Asia



- Academic Council on the United Nations System (ACUNS)
- Agence Universitaire de la francophonie (AUF)
- ASEAN University Network
- Association of Asia-Pacific Business Schools (AAPBS)
- Association of Christian Universities and Colleges in Asia
- Association of Collegiate Business Schools and Programs (ACBSP)
- Association of Commonwealth Universities
- Association of MBAs
- Association of Professional Schools of International Affairs
- European Academy of Business in Society
- European Council for Business Education
- European Doctoral Programs Association in

- Management and Business Administration
- European Foundation for Management Development (EFMD)
- Global Business School Network
- International Association of Jesuit Business Schools
- International Association of Universities
- Japan University Accreditation Association (Japon)
- Ministry of Education of the People's Republic of China
- Partnership in International Management
- The Alliance of Business Education and Scholarship for Tomorrow (ABEST21)
- The Asia Pacific Rim universities
- The Asia-Pacific Quality Network (APQN)
- The Association of Southeast Asian Institutions of Higher Learning (ASAIHL)
- The Association to Advance Collegiate Schools of Business (AACSB)

► Main Associations Oceania



- Academic Council on the United Nations System (ACUNS)
- Association of Asia-Pacific Business Schools (AAPBS)
- Association of Commonwealth Universities
- Association of MBAs
- European Foundation for Management Development (EFMD)
- International Association of Universities
- The Alliance of Business Education and Scholarship for Tomorrow (ABEST21)
- The Asia Pacific Rim universities
- The Asia-Pacific Quality Network (APQN)
- The Association of Southeast Asian Institutions of Higher Learning (ASAIHL)
- The Association to Advance Collegiate Schools of Business (AACSB)

► Main Associations Western Europe



- Academic Council on the United Nations System (ACUNS)
- Associação das Universidades de Língua Portuguesa (AULP)
- Association of Business Schools (UK)
- Association of Collegiate Business Schools and Programs (ACBSP)
- Association of Commonwealth Universities
- Association of Economic Universities of South and Eastern Europe and the Black Sea Region
- Association of MBAs
- Association of Professional Schools of International Affairs

- Associazione Italiana per la Formazione Manageriale (ASFOR)
- Balkan Universities Network
- Baltic Management Development Association
- Central and East European Management Development Association (CEEMAN)
- Certificat Suisse de Qualité pour les Institutions de Formation Continue
- Consejo Latinoamericano de Escuelas de Administración CLADEA
- European Academy of Business in Society
- European Council for Business Education
- European Doctoral Programs Association in Management and Business Administration
- European Foundation for Management Development (EFMD)
- European University Association
- European University Continuing Education Network
- Foundation for International Business Administration Accreditation (Germany)
- Global Business School Network
- Higher Education Funding Council for England (HEFCE)
- International Association of Jesuit Business Schools
- International Association of Universities
- International Management Centres Association
- Nederlands-Vlaamse Accreditatie Organisatie (NVAO)
- Partnership in International Management
- The Association to Advance Collegiate Schools of Business (AACSB)
- The British Accreditation Council
- The Executive MBA Council
- The International Assembly for Collegiate Business Education (IACBE)
- The network of Institutes and schools of public administration in Central and Eastern Europe
- The Network of International Business & Economic School (NIBES)

► Main Associations Latin America



- Academic Council on the United Nations System (ACUNS)
- Asociación de Universidades Confiadas a la Compañía de Jesús en América Latina
- Associação das Universidades de Língua Portuguesa (AULP)
- Associação Nacional de MBA (Brazil)
- Associação Nacional de pos-Graduação e Pesquisa em administração (Brazil)
- Association of Collegiate Business Schools and Programs (ACBSP)
- Association of Commonwealth Universities
- Association of MBAs
- Comisión Nacional de Acreditación (Chile)
- Comisión Nacional de Evaluación y Acreditación Universitaria (Argentina)
- Consejo Latinoamericano de Escuelas de Administración CLADEA
- Consortium for North American Higher Education Collaboration

- European Foundation for Management Development (EFMD)
- Global Business School Network
- International Association of Jesuit Business Schools
- International Association of Universities
- Organisation universitaire interaméricaine
- Organizacão Latinoamericana de Administración (OLA)
- Partnership in International Management
- Social Enterprise Knowledge Network (SEKN)
- The Alliance of Business Education and Scholarship for Tomorrow
- The Association to Advance Collegiate Schools of Business (AACSB)
- The Business Association of Latin American Studies

► Main Associations North America



- Academic Council on the United Nations System (ACUNS)
- Association of American Colleges and Universities (AAC&U)
- Association of American International Colleges and Universities (AAICU)
- Association of Collegiate Business Schools and Programs (ACBSP)
- Association of Commonwealth Universities
- Association of MBAs
- Association of Professional Schools of International Affairs
- Consejo Latinoamericano de Escuelas de Administración CLADEA
- Consortium for North American Higher Education Collaboration
- European Foundation for Management Development (EFMD)
- International Association of Jesuit Business Schools
- International Association of Universities
- International Student Exchange Program (ISEP)
- Middle States Commission on Higher Education
- New England Association of Schools & Colleges
- Organisation universitaire interaméricaine
- Partnership in International Management
- Project Management Institute
- Student in free enterprise (SIFE)
- The Alliance of Business Education and Scholarship for Tomorrow (ABEST21)
- The Association to Advance Collegiate Schools of Business (AACSB)
- The Commission on Colleges of the Southern Association of Colleges and Schools
- The Executive MBA Council
- The Higher Learning Commission (HLC)
- The International Assembly for Collegiate Business Education (IACBE)
- The Northwest Commission on Colleges and Universities (NWCCU)
- Western Association of Schools and Colleges (WASC)

Eduniversal Awards Ceremonies

Since 2007, the Eduniversal Evaluation System (EES) has been ranking business schools according to their international influence and reputation on both national and global levels, and by geographical zone.

Every year during the Eduniversal World Convention, the new Ranking of the Best 1,000 Business Schools in 154 countries is announced. Each year the ranking is determined through the voting of international deans (Eduniversal Deans' Vote Survey) along with the information provided by schools.

During the Eduniversal World Convention, 2 ceremonies are scheduled in celebration of the Best Business Schools achievements.

BOSTON
2015
NORTH AMERICA



PARIS
2008
WESTERN EUROPE



PRAGUE
2010
EASTERN EUROPE



SHANGHAI
2011
FAR EAST ASIA



LIMA
2012
LATIN AMERICA



CAPE TOWN
2009
AFRICA



ISTANBUL
2014
EURASIA & THE MIDDLE-EAST



BANGALORE
2013
CENTRAL ASIA



Eduniversal Awards for the Top Business Schools

The Eduniversal Awards Ceremony highlights the Top 3 Business Schools from each of 9 geographical zones that received the highest recommendation rates from the Deans and Directors who participated in the annual Eduniversal Deans' Vote survey.

Awards 2015 | BOSTON, MA

AFRICA

1. University of Cape Town - UCT Graduate School of Business – *South Africa*
2. The American University in Cairo School of Business – *Egypt*
3. University of Stellenbosch Business School – *South Africa*

CENTRAL ASIA

1. Indian Institute of Management Bangalore (IIM-B) – *India*
2. Indian Institute of Management Ahmedabad (IIM-A) – *India*
3. Indian Institute of Management Calcutta (IIM-C) – *India*

EASTERN EUROPE

1. The University of Economics, Prague (VŠE) – *Czech Republic*
2. St. Petersburg University Graduate School of Management – *Russia*
3. University of Ljubljana Faculty of Economics – *Slovenia*
3. University of Warsaw School of Management – *Poland*

EURASIA & MIDDLE EAST

1. Koç University Graduate School of Business – *Turkey*
1. Tel Aviv University's Faculty of Management - The Leon Recanati Graduate School of Business Administration – *Israel*
2. Istanbul University School of Business – *Turkey*
3. Sabancı Üniversitesi - Sabancı School of Management – *Turkey*

FAR EAST ASIA

1. National University of Singapore - NUS Business School – *Singapore*
2. Hong Kong University of Science and Technology - HKUST Business School – *Hong Kong (S.A.R., China)*
3. Fudan University School of Management – *China*

LATIN AMERICA

1. EGADE Business School - Tecnológico de Monterrey – *Mexico*
2. FGV - EAESP São Paulo Business Administration School – *Brazil*
3. Pontificia Universidad Católica de Chile - Escuela de Administración – *Chile*
3. Universidad de los Andes School of Management – *Colombia*
3. Universidad de Chile School of Business and Economics – *Chile*

NORTH AMERICA

1. Harvard Business School – *USA*
2. McGill University - Desautels Faculty of Management – *Canada*
3. Yale School of Management – *USA*

OCEANIA

1. The University of Melbourne - Melbourne Business School – *Australia*
2. The University of Sydney Business School – *Australia*
3. Monash University - Monash Business School – *Australia*

WESTERN EUROPE

1. London Business School – *United Kingdom*
2. INSEAD – *France*
3. Copenhagen Business School - CBS – *Denmark*



Indian Institute of Management Bangalore (India)

Harvard Business School (USA)

The American University in Cairo School of Business (Egypt)

EGADE Business School (Mexico)



Eduniversal Palmes of Excellence Awards

During the Palmes of Excellence Ceremony, each school receives an official trophy awarded with the number of Palmes of Excellence reached for the current year (Eduniversal Official Selection).



Keio Business School (Japan)

University of the South Pacific Faculty of Business and Economics (Fiji Islands)

The University of Jordan School of Business (Jordan)

University of Buenos Aires Business School (Argentina)



The annual Eduniversal Deans' Vote Survey

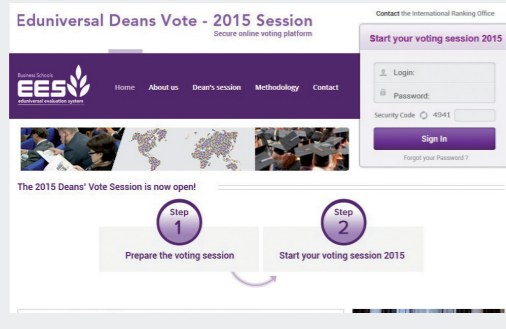
The Deans Vote is the criterion that distinguishes Eduniversal's Ranking and Rating methodology of the Best 1,000 Business Schools from most of the international classification systems.

The Business Schools selected in the Eduniversal Official Selection are evaluated and recommended by their academic Peers from 154 countries.

The aim of this Rating is to add a component of Peers assessment considered as one of the numerous qualitative and quantitative criteria used in the Eduniversal's methodology.

On behalf of their respective academic institutions, each Dean is asked to highlight among the 999 other institutions, the one(s) they would suggest to students, planning to study abroad and answer the question: "What are the business schools you would recommend to a student who is looking to study in this country?"

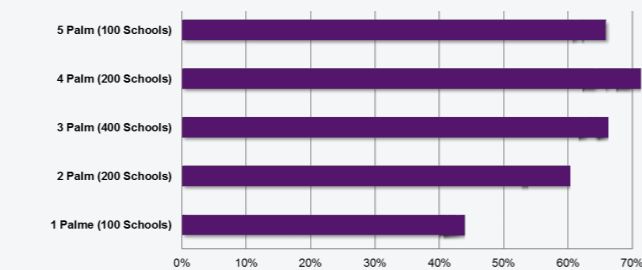
The Deans' Votes generate the schools' recommendation rate which results are disclosed during the Eduniversal World Convention with the annual ratings and rankings by country and published on www.eduniversal-ranking.com



Key facts about the 2015 Eduniversal Deans' Vote Results :

- TOP 3 geographic zones with the main school's participation rate in 2015**
1. Eastern Europe: 90,1%
 2. Western Europe: 76,7%
 3. Middle East & Eurasia and Central Asia : 67,3%

67.30% of the Deans from the 1,000 best Business Schools worldwide have participated in the Deans'Vote.



Participation rate per Palmes League

5 palmes	4 palmes	3 palmes	2 palmes	1 palme
67%	71,3%	67,8%	60,5%	43,2%

Voting process on www.eduniversal-deans-vote.com :

Once a year, the deans & directors of the 1,000 Business Schools included in the Eduniversal Official Selection are invited to participate in the Eduniversal Deans Vote.

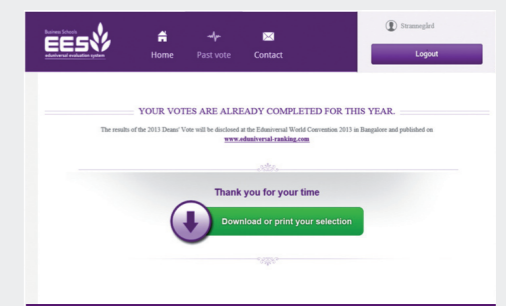
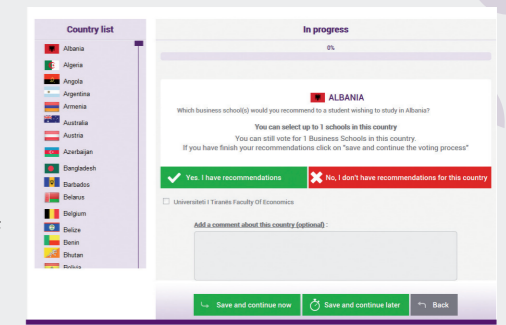
The vote starts every year in November and each dean/director receives his login information granting access to the voting platform

A few simple rules to know on beforehand:

- The dean/ director is the only person allowed to report the votes on behalf of his/her Institution with his personal access.
- Countries are presented in alphabetical order.
- Your country will be the last one in the list (after Zimbabwe).
- You can select up to 50% of the institutions for each country.
- If you don't know or if you don't want to recommend any school in a country, select "no, I don't have recommendation for this country" and the next country will appear on the screen.
- Your own Institution will not appear in the list of your country, as the Dean is not allowed to vote for his own Institution.
- Your votes are considered once the 154 countries of the Eduniversal System have been examined.

Information/requests about the Deans' Vote, please contact : international.coordinator@eduniversal.com

IMPORTANT REMINDER : The 2015/2016 Eduniversal Deans' Vote Survey will start in November/December 2015



www.eduniversal-ranking.com website dedicated for the ranking of the 1,000 Best Business Schools worldwide

Our theme: **EDUCATION** / Our strength: **UNIVERSALITY**

This platform describes the best academic opportunities for the students zone by zone (Africa, Central Asia, Eastern Europe, Eurasia & Middle East, Far East Asia, Latin America, North America, Oceania, Western Europe), via a range of institutions included in the Official Selection of the Best Business Schools with different levels of reputation reflected with the Palmes of Excellence together with the assessments made by Peers (Deans Vote Survey) in 154 countries.

Every year, the annual ratings and rankings by country are disclosed during the Eduniversal World Convention and published on www.eduniversal-ranking.com

Rank	Palme	Country	Number of schools	Deans' recommendation rate (%)
1	5 Palmes	Albania	1	100%
2	4 Palmes	Algeria	1	100%
3	3 Palmes	Algeria	2	100%
4	3 Palmes	Algeria	2	100%
5	3 Palmes	Algeria	2	100%
6	3 Palmes	Algeria	2	100%
7	3 Palmes	Algeria	2	100%
8	3 Palmes	Algeria	2	100%
9	3 Palmes	Algeria	2	100%
10	3 Palmes	Algeria	2	100%
11	3 Palmes	Algeria	2	100%
12	3 Palmes	Algeria	2	100%
13	3 Palmes	Algeria	2	100%
14	3 Palmes	Algeria	2	100%
15	3 Palmes	Algeria	2	100%
16	3 Palmes	Algeria	2	100%
17	3 Palmes	Algeria	2	100%
18	3 Palmes	Algeria	2	100%
19	3 Palmes	Algeria	2	100%
20	3 Palmes	Algeria	2	100%
21	3 Palmes	Algeria	2	100%
22	3 Palmes	Algeria	2	100%
23	3 Palmes	Algeria	2	100%
24	3 Palmes	Algeria	2	100%
25	3 Palmes	Algeria	2	100%
26	3 Palmes	Algeria	2	100%
27	3 Palmes	Algeria	2	100%
28	3 Palmes	Algeria	2	100%
29	3 Palmes	Algeria	2	100%
30	3 Palmes	Algeria	2	100%
31	3 Palmes	Algeria	2	100%
32	3 Palmes	Algeria	2	100%
33	3 Palmes	Algeria	2	100%
34	3 Palmes	Algeria	2	100%
35	3 Palmes	Algeria	2	100%
36	3 Palmes	Algeria	2	100%
37	3 Palmes	Algeria	2	100%
38	3 Palmes	Algeria	2	100%
39	3 Palmes	Algeria	2	100%
40	3 Palmes	Algeria	2	100%
41	3 Palmes	Algeria	2	100%
42	3 Palmes	Algeria	2	100%
43	3 Palmes	Algeria	2	100%
44	3 Palmes	Algeria	2	100%
45	3 Palmes	Algeria	2	100%
46	3 Palmes	Algeria	2	100%
47	3 Palmes	Algeria	2	100%
48	3 Palmes	Algeria	2	100%
49	3 Palmes	Algeria	2	100%
50	3 Palmes	Algeria	2	100%
51	3 Palmes	Algeria	2	100%
52	3 Palmes	Algeria	2	100%
53	3 Palmes	Algeria	2	100%
54	3 Palmes	Algeria	2	100%
55	3 Palmes	Algeria	2	100%
56	3 Palmes	Algeria	2	100%
57	3 Palmes	Algeria	2	100%
58	3 Palmes	Algeria	2	100%
59	3 Palmes	Algeria	2	100%
60	3 Palmes	Algeria	2	100%
61	3 Palmes	Algeria	2	100%
62	3 Palmes	Algeria	2	100%
63	3 Palmes	Algeria	2	100%
64	3 Palmes	Algeria	2	100%
65	3 Palmes	Algeria	2	100%
66	3 Palmes	Algeria	2	100%
67	3 Palmes	Algeria	2	100%
68	3 Palmes	Algeria	2	100%
69	3 Palmes	Algeria	2	100%
70	3 Palmes	Algeria	2	100%
71	3 Palmes	Algeria	2	100%
72	3 Palmes	Algeria	2	100%
73	3 Palmes	Algeria	2	100%
74	3 Palmes	Algeria	2	100%
75	3 Palmes	Algeria	2	100%
76	3 Palmes	Algeria	2	100%
77	3 Palmes	Algeria	2	100%
78	3 Palmes	Algeria	2	100%
79	3 Palmes	Algeria	2	100%
80	3 Palmes	Algeria	2	100%
81	3 Palmes	Algeria	2	100%
82	3 Palmes	Algeria	2	100%
83	3 Palmes	Algeria	2	100%
84	3 Palmes	Algeria	2	100%
85	3 Palmes	Algeria	2	100%
86	3 Palmes	Algeria	2	100%
87	3 Palmes	Algeria	2	100%
88	3 Palmes	Algeria	2	100%
89	3 Palmes	Algeria	2	100%
90	3 Palmes	Algeria	2	100%
91	3 Palmes	Algeria	2	100%
92	3 Palmes	Algeria	2	100%
93	3 Palmes	Algeria	2	100%
94	3 Palmes	Algeria	2	100%
95	3 Palmes	Algeria	2	100%
96	3 Palmes	Algeria	2	100%
97	3 Palmes	Algeria	2	100%
98	3 Palmes	Algeria	2	100%
99	3 Palmes	Algeria	2	100%
100	3 Palmes	Algeria	2	100%

The subdivision of the schools into the Palmes of Excellence leagues allows for a horizontal and intercontinental comparison, which is different from the vertical comparison established by most of the international classification systems.

Each of the 1,000 Institutions selected in the Eduniversal Official Selection has a personalised profile on: www.eduniversal-ranking.com



The Eduniversal Evaluation System International Ranking Agency



Since 2002 in France, and 2008 on the international scale, the Eduniversal Evaluation Agency (EEA) has implemented innovative rankings on the academic sector with the main purpose to highlight the institutions' expertise to inform and advice students all over the world.

International rankings

Best 1,000 Business Schools ratings and rankings in 154 countries



www.eduniversal-ranking.com

Best 4,000 worldwide Master & MBA programs in 30 fields of studies



www.best-masters.com



Best masters national websites

www.mejores-masters.es
www.mejores-masters.mx
www.mejores-masters.ar
www.mejores-masters.co
www.mejores-masters.pe
www.mejores-masters.cl
www.mejores-masters.cr
www.meilleurs-masters.ch
www.meilleurs-masters.ma

www.meilleurs-masters.be
www.best-masters.com.au
www.best-masters.co.nz
www.best-masters.co.za
www.best-masters.ca
www.best-masters.us
www.best-masters.co.uk
www.best-masters.in
www.best-masters.com.ru



Eduniversal Booking Service International platform to manage students application forms



As the first online universal platform for academic candidatures, this new tool allows students to simplify their approach to administrative tasks and at the same time choose which aspects of their training/experience to display on a unique file.

Eduniversal's new platform will also benefit schools by facilitating the process of narrowing down potential candidates by making the selection process more efficient.

Already available at Master level www.mastersbooking.com, will soon be joined by tools for other levels of study, such as Postgraduate (www.bachelorsbooking.com) and Executive education (www.mbabooking.com).



French undergraduate & postgraduate programs rankings

Best French Masters & MBA in 63 fields of studies

www.meilleurs-masters.com



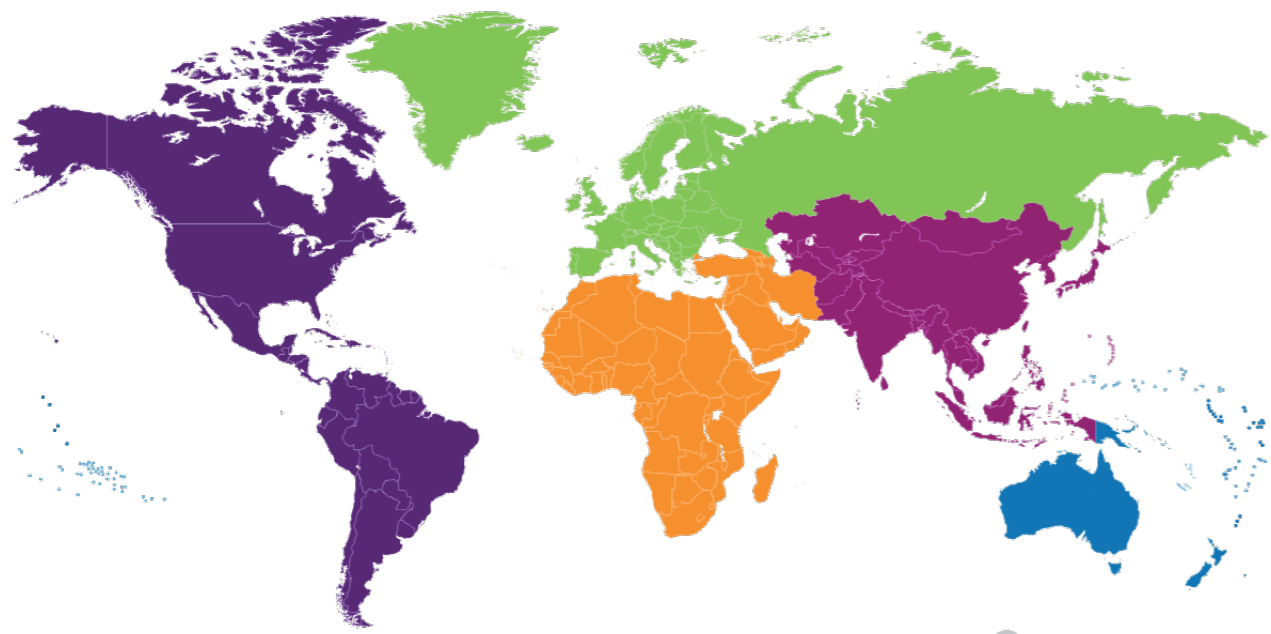
Best French Bachelors and undergraduate programs

www.meilleures-licences.com

www.meilleures-grandes-ecoles.com



Ratings & Rankings | 2015



- North America : 180 Schools in 2 countries
- Latin America : 100 Schools in 27 countries
- Eastern Europe : 81 Schools in 21 countries
- Western Europe : 256 Schools in 21 countries
- Africa : 75 Schools in 36 countries
- Eurasia & Middle East : 49 Schools in 17 countries
- Central Asia : 67 Schools in 10 countries
- Far East Asia : 142 Schools in 14 countries
- Oceania : 50 Schools in 6 countries

Africa



School	Vote 2015	Vote 2014	Vote 2013
Algeria			
3 Palmes of Excellence - Excellent Business School			
Ecole Supérieure Algérienne des Affaires (ESAA)	1 st 81 %	1 st 96 %	1 st 81 %
MDI Alger Business School	2 nd 52 %	2 nd 92 %	2 nd 72 %
2 Palmes of Excellence - Good Business School			
Université d'Alger - Faculté des Sciences Economiques et de Gestion	1 st 42 %	2 nd 44 %	1 st 72 %
ESC Alger	2 nd 29 %	1 st 52 %	2 nd 37 %
Angola			
1 Palme of Excellence - Local Reference			
Universidade Agostinho Neto - Faculdade de Economia	1 st 68 %	1 st 100 %	1 st 63 %
Benin			
1 Palme of Excellence - Local Reference			
Université d'Abomey-Calavi (UAC) - Faculté des Sciences Economiques et de Gestion	1 st 55 %	1 st 72 %	1 st 54 %
Cameroon			
2 Palmes of Excellence - Good Business School			
ESG Cameroun	1 st 75 %	1 st 76 %	1 st 68 %
Congo			
2 Palmes of Excellence - Good Business School			
Ecole Supérieure de Gestion et d'Administration des Entreprises (ESGAE)	1 st 75 %	1 st 88 %	1 st 72 %
Democratic Republic of the Congo			
1 Palme of Excellence - Local Reference			
Université de Lubumbashi - Faculté des Sciences Economiques et de Gestion (UNILU)	1 st 36 %	1 st 36 %	1 st 46 %
Djibouti			
1 Palme of Excellence - Local Reference			
Université de Djibouti - Faculté de Droit Economie Gestion (FDEG)	1 st 55 %	1 st 56 %	1 st 46 %

School	Vote 2015	Vote 2014	Vote 2013
Egypt			
5 Palmes of Excellence - Universal Business School			
The American University in Cairo - School of Business	1 st 358 ‰	1 st 300 ‰	1 st 337 ‰
3 Palmes of Excellence - Excellent Business School			
Ain Shams University - Faculty of Commerce	1 st 62 ‰	1 st 68 ‰	1 st 56 ‰
2 Palmes of Excellence - Good Business School			
Arab Academy for Science & Technology - Graduate School of Business	1 st 62 ‰	1 st 76 ‰	1 st 72 ‰
1 Palme of Excellence - Local Reference			
Arab Open University (AOU) - Egypt Branch - Faculty of Business Administration	1 st 32 ‰	1 st 32 ‰	1 st 26 ‰
Integrated Thebes Academy - Higher Institute of Management and Information Technology	2 nd 19 ‰	2 nd 16 ‰	2 nd 21 ‰
Ethiopia			
2 Palmes of Excellence - Good Business School			
Addis Ababa University - Faculty of Business & Economics (FBE)	1 st 101 ‰	1 st 80 ‰	1 st 72 ‰
Gabon			
1 Palme of Excellence - Local Reference			
Université Omar Bongo - Faculté de droit et sciences économiques (F.D.S.E.)	1 st 49 ‰	1 st 48 ‰	1 st 53 ‰
Ghana			
3 Palmes of Excellence - Excellent Business School			
Ghana Institute of Management and Public Administration (GIMPA)	1 st 94 ‰	1 st 104 ‰	1 st 91 ‰
Ivory Coast			
1 Palme of Excellence - Local Reference			
Université de Cocody - Abidjan - UFR des Sciences Economiques et de Gestion	1 st 65 ‰	1 st 44 ‰	1 st 46 ‰
Kenya			
3 Palmes of Excellence - Excellent Business School			
Strathmore Business School	= 1 st 84 ‰	1 st 92 ‰	2 nd 70 ‰
University of Nairobi - School of Business	= 1 st 84 ‰	2 nd 88 ‰	1 st 96 ‰
United States International University - School of Business	3 rd 36 ‰	3 rd 36 ‰	3 rd 60 ‰
2 Palmes of Excellence - Good Business School			
Catholic University of Eastern Africa - Faculty of Commerce	1 st 26 ‰	1 st 16 ‰	1 st 30 ‰

School	Vote 2015	Vote 2014	Vote 2013
Lesotho			
1 Palme of Excellence - Local Reference			
National University of Lesotho - Faculty of Social Sciences - Department of Business Administration	1 st 45 ‰	1 st 44 ‰	1 st 53 ‰
Madagascar			
1 Palme of Excellence - Local Reference			
ISCAM - Institut Supérieur de la Communication des Affaires et du Management	1 st 71 ‰	1 st 60 ‰	1 st 70 ‰
Malawi			
1 Palme of Excellence - Local Reference			
University of Malawi - Chancellor College - Department of Economics	1 st 52 ‰	1 st 52 ‰	1 st 56 ‰
Mali			
1 Palme of Excellence - Local Reference			
Université de Bamako - Institut Universitaire de Gestion (IUG)	1 st 62 ‰	1 st 44 ‰	1 st 61 ‰
Mauritania			
1 Palme of Excellence - Local Reference			
Université de Nouakchott - Faculté des Sciences Juridiques et Economiques (FSJE)	1 st 55 ‰	1 st 44 ‰	1 st 47 ‰
Mauritius			
2 Palmes of Excellence - Good Business School			
University of Mauritius - Department of Management (DOM)	1 st 97 ‰	1 st 64 ‰	1 st 93 ‰
Morocco			
3 Palmes of Excellence - Excellent Business School			
ESCA School of Management	1 st 162 ‰	2 nd 152 ‰	1 st 128 ‰
HEM Business School	2 nd 123 ‰	1 st 164 ‰	2 nd 121 ‰
Groupe ISCAE	3 rd 75 ‰	3 rd 88 ‰	3 rd 79 ‰
Ecole Nationale de Commerce et de Gestion - Settat (ENCG-SETTAT)	4 th 49 ‰	5 th 40 ‰	5 th 65 ‰
Al Akhawayn University in Ifrane - School of Business Administration	5 th 39 ‰	4 th 64 ‰	4 th 67 ‰
2 Palmes of Excellence - Good Business School			
Université Mohammed V Agdal - Faculté des Sciences Juridiques, Economiques et Sociales	1 st 26 ‰	1 st 16 ‰	1 st 26 ‰

School	Vote 2015	Vote 2014	Vote 2013
Mozambique			
1 Palme of Excellence - Local Reference			
Universidade Eduardo Mondlane - Faculdade de Economia (FEUEM)	1 st 58 %	1 st 60 %	1 st 63 %
Namibia			
1 Palme of Excellence - Local Reference			
Polytechnic of Namibia - Harold Pukewitz Graduate School of Business	1 st 65 %	1 st 80 %	1 st 74 %
Nigeria			
3 Palms of Excellence - Excellent Business School			
Pan-Atlantic University - Lagos Business School	1 st 81 %	1 st 76 %	1 st 88 %
2 Palms of Excellence - Good Business School			
Obafemi Awolowo University - Ile Ife - Faculty of Administration	1 st 16 %	1 st 12 %	1 st 11 %
Rwanda			
1 Palme of Excellence - Local Reference			
National University of Rwanda (NUR) - Faculty of Economics and Management	1 st 55 %	1 st 64 %	1 st 56 %
Senegal			
3 Palms of Excellence - Excellent Business School			
Groupe ISM	1 st 71 %	1 st 56 %	1 st 65 %
2 Palms of Excellence - Good Business School			
Institut Africain de Management (IAM)	1 st 29 %	1 st 28 %	1 st 37 %
Sierra Leone			
1 Palme of Excellence - Local Reference			
Fourah Bay College - University of Sierra Leone - Faculty of Social Sciences and Law	1 st 45 %	1 st 40 %	1 st 53 %
Somalia			
1 Palme of Excellence - Local Reference			
Mogadishu University - Faculty of Economics & Management Sciences	1 st 45 %	1 st 36 %	1 st 51 %

School	Vote 2015	Vote 2014	Vote 2013
South Africa			
5 Palms of Excellence - Universal Business School			
University of Cape Town - UCT Graduate School of Business	1 st 367 %	1 st 392 %	1 st 361 %
University of Stellenbosch Business School	2 nd 344 %	2 nd 376 %	2 nd 302 %
4 Palms of Excellence - Top Business School			
University of Pretoria - Gordon Institute of Business Science (GIBS)	1 st 208 %	1 st 200 %	1 st 172 %
University of the Witwatersrand - Wits Business School	2 nd 149 %	2 nd 164 %	2 nd 158 %
3 Palms of Excellence - Excellent Business School			
Rhodes University - Rhodes Business School	1 st 117 %	= 2 nd 92 %	1 st 132 %
Nelson Mandela Metropolitan University (NMMU) Business School	2 nd 110 %	= 2 nd 92 %	3 rd 104 %
UNISA - University of South Africa - Graduate School of Business Leadership (SBL)	3 rd 91 %	1 st 112 %	2 nd 105 %
North West University - Potchefstroom Campus - Potchefstroom Business School	4 th 58 %	= 4 th 48 %	6 th 44 %
University of the Free State - Universiteit Van Die Vrystaat - UFS Business School	5 th 45 %	= 4 th 48 %	4 th 47 %
University of KwaZulu-Natal - Graduate School of Business and Leadership	= 6 th 26 %	= 4 th 48 %	5 th 46 %
University of Limpopo - Turfloop Graduate School of Leadership	= 6 th 26 %	7 th 20 %	7 th 23 %
2 Palms of Excellence - Good Business School			
Henley Business School, South Africa	1 st 84 %	1 st 96 %	1 st 96 %
Regent Business School	2 nd 49 %	2 nd 48 %	3 rd 54 %
Management College of Southern Africa (MANCOSA) - Durban	3 rd 45 %	3 rd 36 %	2 nd 56 %
Milpark Business School	4 th 13 %	4 th 20 %	4 th 21 %
1 Palme of Excellence - Local Reference			
North-West University - Mafikeng Campus - Faculty of Commerce & Administration	1 st 36 %	= 1 st 32 %	= 1 st 25 %
Tshwane University of Technology - TUT Business School	= 2 nd 16 %	= 1 st 32 %	3 rd 19 %
Damelin - School of Business and Management - Randburg	= 2 nd 16 %	3 rd 20 %	= 1 st 25 %
Regenesys Business School (RBS)	4 th 13 %	4 th 16 %	4 th 12 %
Sudan			
1 Palme of Excellence - Local Reference			
University of Khartoum - School of Management Studies	1 st 49 %	1 st 52 %	1 st 58 %
Swaziland			
1 Palme of Excellence - Local Reference			
University of Swaziland - Faculty of Post-Graduate Studies	1 st 49 %	1 st 52 %	1 st 72 %
Tanzania			
2 Palms of Excellence - Good Business School			
University of Dar-Es-Salaam - Business School	1 st 84 %	1 st 72 %	1 st 79 %

School	Vote 2015	Vote 2014	Vote 2013
Togo			
1 Palme of Excellence - Local Reference			
Université de Lomé - Faculté des Sciences Economiques et de Gestion (FASEG)	1 st 49 %	1 st 56 %	1 st 44 %
Tunisia			
3 Palmes of Excellence - Excellent Business School			
ESSEC Tunis	1 st 88 %	1 st 76 %	1 st 79 %
IHEC Carthage	= 2 nd 42 %	2 nd 40 %	2 nd 51 %
Institut Supérieur de Gestion de Tunis (ISG)	= 2 nd 42 %	3 rd 28 %	3 rd 37 %
2 Palmes of Excellence - Good Business School			
Mediterranean School of Business	1 st 62 %	1 st 72 %	1 st 68 %
Uganda			
2 Palmes of Excellence - Good Business School			
Makerere University Business School (MUBS)	1 st 62 %	1 st 60 %	1 st 70 %
Zambia			
2 Palmes of Excellence - Good Business School			
The University of Zambia - School of Humanities	1 st 58 %	1 st 52 %	1 st 60 %
Zimbabwe			
1 Palme of Excellence - Local Reference			
National University of Science and Technology - Graduate School of Business	1 st 71 %	1 st 52 %	1 st 68 %

Central Asia



School	Vote 2015	Vote 2014	Vote 2013
Bangladesh			
3 Palmes of Excellence - Excellent Business School			
University of Dhaka - Institute of Business Administration (IBA)	1 st 117 %	1 st 84 %	1 st 116 %
Stamford University - Department of Business Administration	2 nd 55 %	2 nd 48 %	2 nd 40 %
1 Palme of Excellence - Local Reference			
North South University School of Business	1 st 26 %	1 st 40 %	1 st 32 %
Buthan			
1 Palme of Excellence - Local Reference			
Royal Institute of Management	1 st 84 %	1 st 88 %	1 st 86 %
India			
5 Palmes of Excellence - Universal Business School			
Indian Institute of Management Bangalore (IIM-B)	1 st 403 %	1 st 392 %	1 st 391 %
Indian Institute of Management Ahmedabad (IIM-A)	2 nd 312 %	2 nd 300 %	2 nd 337 %
4 Palmes of Excellence - Top Business School			
Indian Institute of Management Calcutta (IIM-C)	1 st 269 %	1 st 252 %	1 st 295 %
Indian School of Business (ISB)	2 nd 218 %	2 nd 216 %	2 nd 232 %
Indian Institute of Technology (ITT) Bombay Shailesh J. Metha School of Management	3 rd 192 %	3 rd 124 %	3 rd 156 %
Indian Institute of Technology (ITT) Delhi Department of Management Studies	4 th 133 %	4 th 104 %	5 th 144 %
Management Development Institute (MDI)	5 th 123 %	5 th 96 %	7 th 100 %
Indian Institute of Management Lucknow (IIM-L)	6 th 120 %	7 th 88 %	4 th 154 %
Xavier Labour Relations Institute Jamshedpur - School of Business and Human Resources	7 th 71 %	8 th 76 %	8 th 81 %
3 Palmes of Excellence - Excellent Business School			
⁽¹⁾ University of Delhi - Faculty of Management Studies (FMS)	1 st 153 %	6 th 92 %	6 th 140 %
Indian Institute of Management Kozhikode (IIM-K)	2 nd 120 %	3 rd 100 %	= 2 nd 126 %
Indian Institute of Management Indore (IIM-I)	3 rd 110 %	= 1 st 108 %	1 st 133 %
Xavier Institute of Management & Entrepreneurship (XIME)	4 th 97 %	= 1 st 108 %	5 th 93 %
S.P. Jain Institute of Management & Research	5 th 81 %	5 th 80 %	= 2 nd 126 %
Institute of Management & Technology Ghaziabad	6 th 71 %	6 th 76 %	7 th 75 %
Indian Institute of Foreign Trade Delhi	7 th 62 %	= 8 th 64 %	6 th 88 %
Loyola Institute of Business Administration (LIBA) - Chennai	8 th 58 %	7 th 72 %	8 th 61 %
Birla Institute of Management Technology (BIMTECH)	9 th 55 %	14 th 40 %	= 12 th 47 %
Tata Institute of Social Sciences School of Management and Labour Studies	10 th 49 %	10 th 60 %	11 th 49 %
IILM Institute for Higher Education	= 11 th 45 %	11 th 56 %	20 th 30 %
T.A. Pai Management Institute	= 11 th 45 %	= 16 th 32 %	= 18 th 35 %
Xavier University Bhubaneswar - Xavier Institute of Management Bhubaneswar (XIMB)	= 13 th 39 %	= 8 th 64 %	9 th 58 %

⁽¹⁾ The league downward for this institution has been approved in June 2015 by the Eduniversal International Scientific Committee.

School	Vote 2015	Vote 2014	Vote 2013
3 Palmes of Excellence - Excellent Business School			
ICFAI Business School, Hyderabad	= 13 th 39 %	= 12 th 48 %	10 th 54 %
Narsee Monjee Institute of Management Studies (NMIMS)	= 13 th 39 %	= 12 th 48 %	14 th 46 %
Amity International Business School	16 th 36 %	19 th 28 %	16 th 40 %
Alliance School of Business	= 17 th 26 %	15 th 36 %	= 12 th 47 %
(1) Nirma University Institute of Management	= 17 th 26 %	= 4 th 32 %	= 4 th 39 %
Jamnalal Bajaj Institute of Management Studies	19 th 19 %	= 16 th 32 %	15 th 42 %
Symbiosis Center for Management and HRD - Pune	= 20 th 13 %	20 th 24 %	23 rd 18 %
B.K. School of Management Gujarat University	= 20 th 13 %	= 21 st 16 %	= 18 th 35 %
Bharathidasan Institute of Management	22 nd 10 %	= 16 th 32 %	21 st 25 %
Prin. L.N. Welingkar Institute of Management and Research	23 rd 3 %	23 rd 12 %	22 nd 23 %
2 Palmes of Excellence - Good Business School			
(2) International Management Institute (IMI)	1 st 58 %	4 th 92 %	4 th 125 %
Goa Institute of Management (GIM)	2 nd 42 %	3 rd 36 %	3 rd 51 %
ITM Group - ITM Business School	3 rd 39 %	1 st 56 %	1 st 58 %
Symbiosis Institute of Business Management	4 th 36 %	= 11 th 16 %	8 th 26 %
Institute for Financial Management & Research (IFMR)	5 th 32 %	= 4 th 32 %	= 4 th 39 %
Christ College - Bangalore Faculty of Commerce and Management	= 6 th 32 %	= 9 th 20 %	6 th 33 %
(2) University Business School - Panjab University - Chandigarh	= 6 th 26 %	= 21 st 16 %	17 th 39 %
Fore School of Management	= 8 th 26 %	= 6 th 28 %	= 9 th 25 %
NIILM Centre for Management Studies	= 8 th 23 %	= 6 th 28 %	14 th 14 %
K.J. Somaiya Institute of Management Studies & Research	10 th 19 %	8 th 24 %	12 th 18 %
PSG Institute of Management	= 11 th 19 %	= 11 th 16 %	= 9 th 25 %
Institute of Rural Management - Anand	= 11 th 13 %	= 9 th 20 %	11 th 23 %
1 Palme of Excellence - Local Reference			
(2) National Institute of Industrial Engineering - Mumbai	1 st 16 %	= 13 th 8 %	13 th 16 %
LAL Bahadur Shastri LBS Institute of Management	2 nd 13 %	1 st 28 %	2 nd 18 %
SIES College of Management Studies	3 rd 10 %	2 nd 24 %	3 rd 12 %

Kazakhstan

4 Palmes of Excellence - Top Business School			
Almaty Management University (former International Academy of Business)	1 st 146 %	1 st 160 %	1 st 95 %
2 Palmes of Excellence - Good Business School			
KIMEP University Bang College of Business	1 st 42 %	1 st 32 %	1 st 40 %

Kyrgyzstan

1 Palme of Excellence - Local Reference			
American University of Central Asia	1 st 84 %	1 st 80 %	1 st 88 %

(1) The league upward for this institution has been approved in June 2015 by the Eduniversal International Scientific Committee.
 (2) The league downward for this institution has been approved in June 2015 by the Eduniversal International Scientific Committee.

School	Vote 2015	Vote 2014	Vote 2013
--------	-----------	-----------	-----------

Maldives

1 Palme of Excellence - Local Reference			
MAPS College	1 st 55 %	1 st 68 %	1 st 58 %

Nepal

1 Palme of Excellence - Local Reference			
Tribhuvan University - Faculty of Management	1 st 71 %	1 st 56 %	1 st 82 %

Pakistan

3 Palmes of Excellence - Excellent Business School			
Lahore University of Management Sciences (LUMS) - Suleman Dawood School of Business	1 st 123 %	1 st 92 %	1 st 104 %
2 Palmes of Excellence - Good Business School			
Institute of Business Management (IoBM)	1 st 65 %	1 st 60 %	1 st 74 %
UMT - University of Management and Technology - School of Business and Economics	2 nd 42 %	2 nd 24 %	2 nd 40 %
1 Palme of Excellence - Local Reference			
SZABIST (Shaheed Zulfikar Ali Bhutto Institute of Science and Technology) - Faculty of Management Sciences	1 st 0 %	1 st 8 %	1 st 14 %

Sri Lanka

3 Palmes of Excellence - Excellent Business School			
University of Colombo - Faculty of Management and Finance	1 st 97 %	1 st 52 %	1 st 89 %

Uzbekistan

2 Palmes of Excellence - Good Business School			
Tashkent Financial Institute	1 st 42 %	1 st 36 %	1 st 32 %
IBS Kelajak Ilmi	2 nd 32 %	2 nd 28 %	2 nd 25 %
1 Palme of Excellence - Local Reference			
Samarkand State University - Faculty of Economics	1 st 58 %	1 st 36 %	1 st 42 %

Eastern Europe



School Vote 2015 Vote 2014 Vote 2013

Albania

1 Palme of Excellence - Local Reference

Universiteti i Tiranës - Faculty of Economics	1 st	88 %	1 st	120 %	1 st	91 %
---	-----------------	------	-----------------	-------	-----------------	------

Belarus

1 Palme of Excellence - Local Reference

Institute for Privatisation and Management - IPM Business School	1 st	97 %	1 st	128 %	1 st	86 %
--	-----------------	------	-----------------	-------	-----------------	------

Bosnia and Herzegovina

2 Palmes of Excellence - Good Business School

University of Sarajevo - School of Economics and Business	1 st	104 %	1 st	120 %	2 nd	70 %
(1) American University in Bosnia and Herzegovina	-	-	-	-	-	-

Bulgaria

3 Palmes of Excellence - Excellent Business School

Varna University of Management (VUM)	1 st	110 %	1 st	112 %	1 st	105 %
--------------------------------------	-----------------	-------	-----------------	-------	-----------------	-------

Croatia

4 Palmes of Excellence - Top Business School

(2) Zagreb School of Economics and Management	1 st	211 %	1 st	224 %	1 st	179 %
---	-----------------	-------	-----------------	-------	-----------------	-------

3 Palmes of Excellence - Excellent Business School

University of Zagreb - Faculty of Economics and Business	1 st	185 %	2 nd	176 %	2 nd	140 %
--	-----------------	-------	-----------------	-------	-----------------	-------

2 Palmes of Excellence - Good Business School

Josip Juraj Strossmayer University of Osijek - Faculty of Economics	1 st	42 %	1 st	28 %	2 nd	25 %
Cotrugli Business School	2 nd	39 %	2 nd	24 %	1 st	28 %

Czech Republic

5 Palmes of Excellence - Universal Business School

The University of Economics Prague (VSE)	1 st	338 %	1 st	308 %	1 st	277 %
--	-----------------	-------	-----------------	-------	-----------------	-------

3 Palmes of Excellence - Excellent Business School

Prague International Business School (PIBS)	1 st	175 %	1 st	164 %	1 st	202 %
CMC Graduate School of Business	2 nd	68 %	= 2 nd	52 %	4 th	53 %
Brno University of Technology - Faculty of Business and Management	3 rd	58 %	= 2 nd	52 %	2 nd	60 %
Brno International Business School (BIBS)	4 th	52 %	4 th	40 %	3 rd	58 %

(1) New institution approved by the Eduniversal International Scientific Committee to enter in the 2015 Eduniversal Official Selection.
 (2) The league upward for this institution has been approved in June 2015 by the Eduniversal International Scientific Committee.

School Vote 2015 Vote 2014 Vote 2013

Estonia

4 Palmes of Excellence - Top Business School

Estonian Business School	1 st	146 %	1 st	140 %	1 st	114 %
--------------------------	-----------------	-------	-----------------	-------	-----------------	-------

3 Palmes of Excellence - Excellent Business School

Tallinn School of Economics and Business Administration - TUT	1 st	114 %	1 st	148 %	1 st	121 %
---	-----------------	-------	-----------------	-------	-----------------	-------

Hungary

4 Palmes of Excellence - Top Business School

Corvinus University of Budapest- Faculty of Business Administration and Economics	1 st	256 %	1 st	228 %	1 st	196 %
Central European University - CEU Business School	2 nd	159 %	2 nd	160 %	2 nd	156 %

3 Palmes of Excellence - Excellent Business School

Budapest University of Technology and Economics - Faculty of Social Sciences	1 st	127 %	= 1 st	104 %	1 st	125 %
International Business School (IBS)	2 nd	101 %	= 1 st	104 %	2 nd	119 %
University of Pécs - Faculty of Business and Economics	3 rd	55 %	3 rd	56 %	3 rd	42 %

Kosovo

1 Palme of Excellence - Local Reference

Universum University College - Department of Business and Management	1 st	62 %	1 st	44 %	1 st	37 %
--	-----------------	------	-----------------	------	-----------------	------

Latvia

3 Palmes of Excellence - Excellent Business School

RISEBA - Riga International School of Economics and Business Administration	1 st	146 %	2 nd	136 %	2 nd	121 %
Riga Technical University - Faculty of Engineering Economics and Management (FEEM) and Riga Business School	2 nd	114 %	1 st	144 %	1 st	149 %

2 Palmes of Excellence - Good Business School

BA School of Business and Finance	1 st	39 %	1 st	16 %	1 st	39 %
Latvia University - Faculty of Economics and Management	2 nd	0 %	2 nd	0 %	-	-

Lithuania

4 Palmes of Excellence - Top Business School

ISM University of Management & Economics	1 st	159 %	1 st	160 %	1 st	140 %
--	-----------------	-------	-----------------	-------	-----------------	-------

3 Palmes of Excellence - Excellent Business School

International Business School at Vilnius University	1 st	143 %	1 st	136 %	1 st	130 %
(1) Vytautas Magnus University - Baltic Management Institute (BMI) and Faculty of Business and Economics	2 nd	94 %	1 st	44 %	1 st	47 %
(2) Kaunas University of Technology	-	-	-	-	-	-

(1) The league upward for this institution has been approved in June 2015 by the Eduniversal International Scientific Committee.
 (2) New institution approved by the Eduniversal International Scientific Committee to enter in the 2015 Eduniversal Official Selection.

School	Vote 2015	Vote 2014	Vote 2013
Macedonia			
3 Palms of Excellence - Excellent Business School			
University SS Cyril and Methodius - Faculty of Economics	1 st 97 %	1 st 72 %	1 st 91 %
Moldova			
1 Palme of Excellence - Local Reference			
Academia de Studii Economice a Moldovei (ASEM)	1 st 78 %	1 st 72 %	1 st 61 %
Montenegro			
2 Palms of Excellence - Good Business School			
University of Montenegro - Faculty of Economics	1 st 91 %	1 st 100 %	1 st 88 %
Poland			
5 Palms of Excellence - Universal Business School			
SGH - Warsaw School of Economics	1 st 227 %	1 st 260 %	1 st 209 %
4 Palms of Excellence - Top Business School			
University of Warsaw- School of Management	1 st 276 %	1 st 272 %	1 st 268 %
Kozminski University - Akademia Leona Kozminskiego	2 nd 227 %	2 nd 268 %	2 nd 225 %
(1) Poznań University of Economics	3 rd 120 %	1 st 152 %	1 st 121 %
3 Palms of Excellence - Excellent Business School			
WUT BS - Warsaw University of Technology Business School	1 st 84 %	2 nd 112 %	2 nd 100 %
Gdansk University of Technology - Faculty of Management and Economics	2 nd 81 %	3 rd 88 %	4 th 82 %
Nicolaus Copernicus University - The Faculty of Economics Sciences and Management	3 rd 58 %	4 th 72 %	3 rd 84 %
Gdansk Foundation for Management Development	4 th 36 %	5 th 44 %	5 th 53 %
National Louis University - Nowy Sacz Graduate Business School	5 th 32 %	= 6 th 24 %	7 th 33 %
2 Palms of Excellence - Good Business School			
Polish Open University	1 st 29 %	1 st 28 %	1 st 28 %
(2) Wroclaw University of Economics	-	-	-
Romania			
3 Palms of Excellence - Excellent Business School			
Bucharest Business School	1 st 136 %	1 st 136 %	1 st 132 %
ASEBUSS - Institute for Business and Public Administration	2 nd 49 %	2 nd 56 %	2 nd 42 %
University of Bucharest - Universitatea din Bucuresti, Facultatea de Administratie si Afaceri	3 rd 36 %	3 rd 40 %	3 rd 37 %
2 Palms of Excellence - Good Business School			
University « Alexandru Ioan Cuza » - Faculty of Economics and Business Administration	1 st 49 %	1 st 48 %	1 st 51 %
Business Faculty Babes - Bolyai University	2 nd 39 %	= 2 nd 36 %	3 rd 39 %
Faculty of Economics and Business Administration, West University of Timisoara	3 rd 36 %	= 2 nd 36 %	2 nd 46 %

(1) The league upward for this institution has been approved in June 2015 by the Eduniversal International Scientific Committee.

(2) New institution approved by the Eduniversal International Scientific Committee to enter in the 2015 Eduniversal Official Selection.

School	Vote 2015	Vote 2014	Vote 2013
Russia			
5 Palms of Excellence - Universal Business School			
Graduate School of Management, St. Petersburg University	1 st 318 %	1 st 316 %	1 st 304 %
Lomonosov Moscow State University Business School	2 nd 198 %	2 nd 188 %	1 st 191 %
4 Palms of Excellence - Top Business School			
IBS Moscow, The Russian Presidential Academy of National Economy and Public Administration	1 st 156 %	2 nd 136 %	3 rd 82 %
Moscow International Higher Business School MIRBIS	2 nd 149 %	1 st 180 %	1 st 167 %
IMISP - International Management Institute of St-Petersburg	3 rd 88 %	3 rd 124 %	2 nd 135 %
3 Palms of Excellence - Excellent Business School			
Plekhanov Russian University of Economics - International Business School Faculty (IBS Plekhanov)	1 st 117 %	2 nd 112 %	4 th 89 %
National Research University Higher School of Economics – Faculty of Business Management (BM HSE) and Graduate Management School (GMS HSE)	2 nd 78 %	1 st 116 %	2 nd 93 %
State University of Management - Higher School of Business	3 rd 65 %	3 rd 72 %	1 st 105 %
(1) Graduate School of Corporate Management (GSCM), Russian Presidential Academy of National Economy and Public Administration (RANEPa)	-	-	-
2 Palms of Excellence - Good Business School			
Higher Economic School Saint-Petersburg State University of Economics and Finance (HESSpS UEF)	1 st 104 %	1 st 112 %	1 st 91 %
Business School of Ural Federal University named after the first President of Russia B.N.Yeltsin	= 2 nd 49 %	3 rd 52 %	1 st 54 %
Institute of Economics and Finance "SINERGHIA"	= 2 nd 49 %	4 th 48 %	2 nd 63 %
Vladivostok State University of Economics and Service - Higher School of Management	4 th 45 %	8 th 32 %	5 th 51 %
International Management Institute LINK	5 th 36 %	2 nd 56 %	4 th 53 %
Kazan (Volga Region) Federal University (KFU) - Institute of Economics and Finance	6 th 32 %	5 th 40 %	= 6 th 49 %
Institute of Management, Business and Law	7 th 29 %	= 6 th 36 %	3 rd 61 %
Baikal International Business School - Irkutsk State University	= 8 th 19 %	= 6 th 36 %	= 6 th 49 %
Perm State Technical University - Regional Management Center	= 8 th 19 %	9 th 28 %	8 th 28 %
(1) Siberian Institute of Business, Management and Psychology	-	-	-
1 Palme of Excellence - Local Reference			
HCMS - Higher Commercial Management School - Ministry of Economic Development and Trade of the RF	1 st 10 %	1 st 8 %	9 th 14 %
Serbia			
3 Palms of Excellence - Excellent Business School			
University of Belgrade - Faculty of Economics	1 st 169 %	1 st 124 %	1 st 119 %
1 Palme of Excellence - Local Reference			
Megatrend University of Applied Sciences- Faculty of Management	1 st 16 %	1 st 16 %	1 st 32 %
Slovakia			
3 Palms of Excellence - Excellent Business School			
Comenius University - Faculty of Management	1 st 162 %	1 st 144 %	1 st 135 %

(1) New institution approved by the Eduniversal International Scientific Committee to enter in the 2015 Eduniversal Official Selection.

School	Vote 2015	Vote 2014	Vote 2013
Slovenia			
4 Palmes of Excellence - Top Business School			
University of Ljubljana - Faculty of Economics	1 st 276 ‰	1 st 304 ‰	1 st 233 ‰
IEDC - Bled School of Management	2 nd 169 ‰	2 nd 160 ‰	2 nd 151 ‰
3 Palmes of Excellence - Excellent Business School			
University of Maribor - Faculty of Business and Economics	1 st 58 ‰	1 st 56 ‰	1 st 61 ‰
1 Palme of Excellence - Local Reference			
GEA College	1 st 10 ‰	1 st 16 ‰	1 st 5 ‰

School	Vote 2015	Vote 2014	Vote 2013
Ukraine			
3 Palmes of Excellence - Excellent Business School			
International Management Institute - MIM Kyiv	1 st 91 ‰	1 st 88 ‰	2 nd 75 ‰
KNEU - Kiev National Economic University	2 nd 75 ‰	4 th 72 ‰	3 rd 70 ‰
International Institute of Business	3 rd 49 ‰	= 2 nd 76 ‰	1 st 86 ‰
Kyiv Mohyla Business School	4 th 45 ‰	= 2 nd 76 ‰	4 th 46 ‰
2 Palmes of Excellence - Good Business School			
⁽¹⁾ Kyiv School of Economics	1 st 58 ‰	-	-
⁽¹⁾ Ukrainian Catholic University - Lviv School of Business School	2 nd 39 ‰	-	-

⁽¹⁾ New institution approved by the Eduniversal International Scientific Committee to enter in the 2015 Eduniversal Official Selection.

Eurasia & Middle-East



School	Vote 2015	Vote 2014	Vote 2013
Armenia			
2 Palmes of Excellence - Good Business School			
American University of Armenia -The School of Business and Management	1 st 91 ‰	1 st 148 ‰	1 st 123 ‰
Azerbaijan			
1 Palme of Excellence - Local Reference			
Khazar University - School of Economics and Management	1 st 58 ‰	1 st 88 ‰	1 st 53 ‰
Qafqaz University - Department of Business Administration	2 nd 29 ‰	2 nd 32 ‰	2 nd 28 ‰
Bahrain			
2 Palmes of Excellence - Good Business School			
⁽¹⁾ University College of Bahrain (UCB) - School of Business	1 st 68 ‰	1 st 56 ‰	1 st 98 ‰
Georgia			
3 Palmes of Excellence - Excellent Business School			
Caucasus University - Caucasus School of Business	1 st 110 ‰	1 st 116 ‰	1 st 79 ‰
2 Palmes of Excellence - Good Business School			
Free University Business School (ESM)	1 st 42 ‰	1 st 44 ‰	1 st 46 ‰
1 Palme of Excellence - Local Reference			
Tbilisi Academy of Economy and Law - Faculty of Business Administration	1 st 62 ‰	1 st 56 ‰	1 st 65 ‰
Iran			
2 Palmes of Excellence - Good Business School			
IMRE - Institute of Management Research & Education	1 st 71 ‰	1 st 48 ‰	1 st 61 ‰
1 Palme of Excellence - Local Reference			
Qeshm Institute of Higher Education (QIHE)	1 st 0 ‰	1 st 8 ‰	1 st 11 ‰
Israel			
5 Palmes of Excellence - Universal Business School			
Tel Aviv University's Faculty of Management - The Leon Recanati Graduate School of Business Administration	1 st 344 ‰	1 st 304 ‰	1 st 293 ‰
4 Palmes of Excellence - Top Business School			
⁽²⁾ Hebrew University of Jerusalem (HUJI) - Jerusalem School of Business Administration	1 st 211 ‰	1 st 180 ‰	1 st 165 ‰
3 Palmes of Excellence - Excellent Business School			
Ben-Gurion University of the Negev - Guilford Glazer Faculty of Business and Management	1 st 123 ‰	3 rd 116 ‰	3 rd 93 ‰
University of Haifa - The Haifa Graduate School of Management	2 nd 110 ‰	2 nd 120 ‰	2 nd 128 ‰
Bar-Ilan University - The Graduate School of Business Administration	3 rd 65 ‰	4 th 76 ‰	4 th 67 ‰

⁽¹⁾ The league downward for this institution has been approved in June 2015 by the Eduniversal International Scientific Committee.

⁽²⁾ The league upward for this institution has been approved in June 2015 by the Eduniversal International Scientific Committee.

School	Vote 2015		Vote 2014		Vote 2013	
--------	-----------	--	-----------	--	-----------	--

2 Palmes of Excellence - Good Business School						
Open University of Israel - Department of Management and Economics	1 st	36 %	1 st	48 %	1 st	32 %

Jordan

3 Palmes of Excellence - Excellent Business School						
The University of Jordan - Faculty of Business	1 st	94 %	1 st	80 %	1 st	75 %

1 Palme of Excellence - Local Reference						
Princess Sumaya University for Technology - King Talal Business School	1 st	23 %	1 st	32 %	1 st	30 %

Kuwait

2 Palmes of Excellence - Good Business School						
⁽¹⁾ Kuwait University - College of Business Administration (CBA)	1 st	107 %	2 nd	68 %	1 st	118 %
⁽¹⁾ American University of Kuwait (AUK) - Business and Economics Division	2 nd	97 %	1 st	80 %	2 nd	105 %
Kuwait Maastricht Business School	3 rd	65 %	1 st	40 %	1 st	60 %

Lebanon

4 Palmes of Excellence - Top Business School						
American University of Beirut - Suliman S. Olayan School of Business (OSB)	1 st	166 %	1 st	160 %	1 st	160 %

3 Palmes of Excellence - Excellent Business School						
Lebanese American University (LAU) - The School of Business, Beirut & Byblos	1 st	97 %	1 st	92 %	1 st	81 %
Holy Spirit University of Kaslik - USEK - Faculty of Business and Commercial Sciences	= 2 nd	55 %	2 nd	72 %	3 rd	65 %
Université Saint Joseph - Faculté de Gestion et de Management (FGM)	= 2 nd	55 %	3 rd	56 %	2 nd	72 %

2 Palmes of Excellence - Good Business School						
Ecole Supérieure des Affaires	1 st	42 %	1 st	40 %	1 st	54 %

Oman

2 Palmes of Excellence - Good Business School						
Sultan Qaboos University - College of Commerce and Economics	1 st	75 %	1 st	68 %	1 st	91 %

Palestinian Authority

1 Palme of Excellence - Local Reference						
Al-Quds University - Faculty of Business & Economics	1 st	71 %	1 st	72 %	1 st	75 %

Qatar

2 Palmes of Excellence - Good Business School						
Qatar University - College of Business and Economics	1 st	133 %	1 st	116 %	1 st	139 %

⁽¹⁾ The league downward for this institution has been approved in June 2015 by the Eduniversal International Scientific Committee.

School	Vote 2015		Vote 2014		Vote 2013	
--------	-----------	--	-----------	--	-----------	--

Saudi Arabia

4 Palmes of Excellence - Top Business School						
King Fahd University of Petroleum and Minerals - College of Industrial Management	1 st	101 %	1 st	92 %	1 st	116 %

3 Palmes of Excellence - Excellent Business School						
King Saud University - College of Business Administration	1 st	133 %	1 st	100 %	1 st	125 %
King Abdulaziz University (KAU) - Faculty of Economics and Administration	2 nd	107 %	2 nd	84 %	2 nd	107 %
CBA - College of Business Administration	3 rd	36 %	3 rd	44 %	3 rd	46 %

2 Palmes of Excellence - Good Business School						
Arab Open University - Saudi Arabia Branch - College of Business Studies	1 st	32 %	1 st	56 %	1 st	56 %

1 Palme of Excellence - Local Reference						
Qutorba Human Management Development & Social Studies	1 st	6 %	1 st	8 %	1 st	9 %

Syria

2 Palmes of Excellence - Good Business School						
HIBA - Higher Institute of Business Administration	1 st	62 %	1 st	56 %	1 st	56 %

Turkey

5 Palmes of Excellence - Universal Business School						
⁽¹⁾ Koç University - Graduate School of Business	1 st	344 %	1 st	332 %	1 st	246 %

4 Palmes of Excellence - Top Business School						
Istanbul University - School of Business	1 st	269 %	2 nd	216 %	2 nd	223 %
⁽¹⁾ Sabanci Üniversitesi - Sabanci School of Management	2 nd	221 %	1 st	200 %	1 st	174 %
Bilkent University - Faculty of Business Administration	3 rd	208 %	3 rd	180 %	3 rd	202 %

3 Palmes of Excellence - Excellent Business School						
Galatasaray Üniversitesi - Faculty of Economics and administrative Sciences	1 st	55 %	2 nd	84 %	2 nd	77 %

2 Palmes of Excellence - Good Business School						
Marmara University - Faculty of Business Administration	1 st	62 %	1 st	64 %	1 st	61 %
Eastern Mediterranean University - Gazimagusa - Faculty of Business and Economics	2 nd	55 %	2 nd	44 %	2 nd	46 %
Girne American University (GAU) - Faculty of Business & Economics	3 rd	29 %	3 rd	16 %	3 rd	23 %

United Arab Emirates

3 Palmes of Excellence - Excellent Business School						
University of Dubai - College of Business Administration	1 st	123 %	1 st	144 %	1 st	135 %
United Arab Emirates University (UAEU) - College of Business and Economics	2 nd	104 %	2 nd	84 %	2 nd	111 %
University of Sharjah - College of Business Administration	3 rd	65 %	3 rd	76 %	3 rd	65 %
⁽²⁾ The American University of Dubai - School of Business Administration	-	-	-	-	-	-

2 Palmes of Excellence - Good Business School						
Zayed University (ZU) - College of Business Sciences	1 st	65 %	1 st	40 %	1 st	37 %

Yemen

1 Palme of Excellence - Local Reference						
Queen Arwa University - College of Commercial Sciences and Administration	1 st	55 %	1 st	48 %	1 st	51 %

⁽¹⁾ The league upward for this institution has been approved in June 2015 by the Eduniversal International Scientific Committee.

⁽²⁾ New institution approved by the Eduniversal International Scientific Committee to enter in the 2015 Eduniversal Official Selection.

Far East Asia



School	Vote 2015	Vote 2014	Vote 2013
--------	-----------	-----------	-----------

Brunei

2 Palmes of Excellence - Good Business School				
Universiti Brunei Darussalam - Faculty of Business, Economics and Policies Studies	1 st	88 %	1 st 96 %	1 st 104 %

Cambodia

2 Palmes of Excellence - Good Business School				
University of Cambodia - College of Management	1 st	52 %	1 st 44 %	1 st 54 %

1 Palme of Excellence - Local Reference				
Paññasastra University of Cambodia - Graduate School of Management and Economics GSME	1 st	26 %	1 st 40 %	1 st 26 %

China

5 Palmes of Excellence - Universal Business School					
Fudan University School of Management	1 st	364 %	2 nd 360 %	1 st 386 %	
Tsinghua University - School of Economics and Management	2 nd	351 %	4 th 324 %	3 rd 332 %	
CEIBS - China Europe International Business School	3 rd	347 %	1 st 368 %	2 nd 346 %	
Peking University - Guanghua School of Management	4 th	334 %	3 rd 352 %	4 th 318 %	
Shanghai Jiao Tong University - Antai College of Economics & Management	5 th	292 %	5 th 280 %	5 th 272 %	

4 Palmes of Excellence - Top Business School					
⁽¹⁾ Renmin University Of China - School of Business	1 st	250 %	1 st 252 %	1 st 211 %	
Tongji University - School of Economics and Management	2 nd	192 %	2 nd 188 %	2 nd 172 %	
Zhejiang University School of Management	3 rd	169 %	3 rd 140 %	3 rd 116 %	
Nanjing University - School of Business	4 th	162 %	1 st 200 %	1 st 195 %	

3 Palmes of Excellence - Excellent Business School					
Shanghai University of Finance and Economics (SUFE)	1 st	192 %	2 nd 184 %	2 nd 193 %	
⁽²⁾ Beijing Jiao Tong University - School of Economics and Management	2 nd	182 %	-	-	-
Xiamen University School of Management	3 rd	136 %	= 6 th 88 %	11 th 84 %	
Beijing Normal University - BNU Business School	= 4 th	127 %	3 rd 156 %	3 rd 142 %	
The University of International Business & Economics (UIBE) - School of Business	= 4 th	127 %	4 th 120 %	4 th 112 %	
Wuhan University - School of Economics & Management	= 6 th	117 %	5 th 96 %	6 th 107 %	
Tianjin University School of Management	= 6 th	117 %	= 6 th 88 %	5 th 109 %	
⁽²⁾ Sun Yat Sen University - Sun Yat Sen Business School	8 th	101 %	-	-	-
Nankai University Business School	9 th	97 %	= 6 th 88 %	7 th 104 %	
Xi'an Jiaotong University - School of Management	10 th	84 %	= 6 th 88 %	10 th 86 %	
Shanghai Institute of Foreign Trade (SIFT) - Business School	11 th	78 %	10 th 80 %	= 8 th 88 %	
Shandong University - School of Business & Management	12 th	71 %	16 th 56 %	12 th 82 %	
Cheung Kong Graduate School of Business	13 th	68 %	11 th 76 %	14 th 67 %	

⁽¹⁾ The league upward for this institution has been approved in June 2015 by the Eduniversal International Scientific Committee.
⁽²⁾ New institution approved by the Eduniversal International Scientific Committee to enter in the 2015 Eduniversal Official Selection.

School	Vote 2015	Vote 2014	Vote 2013
--------	-----------	-----------	-----------

3 Palmes of Excellence - Excellent Business School					
Harbin Institute of Technology School of Management	= 14 th	62 %	12 th 72 %	13 th 72 %	
Zhongshan University / Sun Yat-San University - Lingnan College	= 14 th	62 %	13 th 68 %	17 th 49 %	
Jilin University School of Management	16 th	49 %	= 17 th 40 %	18 th 42 %	
University of Science and Technology of China School of Management	= 17 th	45 %	14 th 64 %	= 8 th 88 %	
Zhengzhou University School of Business	= 17 th	45 %	15 th 60 %	16 th 53 %	
BUPT School of Economics and Management	19 th	39 %	= 17 th 40 %	15 th 54 %	

2 Palmes of Excellence - Good Business School					
Shenzhen University School of Management	1 st	68 %	1 st 72 %	1 st 72 %	
Central University of Finance and Economics (CUFE)	= 2 nd	55 %	= 3 rd 40 %	2 nd 56 %	
Guangxi University College of Business	= 2 nd	55 %	= 9 th 28 %	= 5 th 42 %	
Chongqing University School of Economics and Business Administration	= 4 th	52 %	= 3 rd 40 %	= 5 th 42 %	
Central South University School of Business	= 4 th	52 %	= 9 th 28 %	9 th 37 %	
Guizhou University College of Management	= 6 th	39 %	2 nd 48 %	4 th 44 %	
Huazhong University of Science & Technology - School of Management	= 6 th	39 %	= 3 rd 40 %	= 7 th 40 %	
Yunnan University - School of Economics	= 6 th	39 %	6 th 36 %	3 rd 47 %	
Capital University of Economics and Business (CUEB)	= 6 th	39 %	= 7 th 32 %	= 7 th 40 %	
Xinjiang University Institute of Economic & Management	= 6 th	39 %	= 12 th 16 %	= 13 th 28 %	
Hohai University Business School	11 th	36 %	= 7 th 32 %	= 11 th 30 %	
Southeast University - School of Economic and Management	= 12 th	32 %	11 th 24 %	= 13 th 28 %	
Dongbei University of Finance and Economics (DUFE) School of International Business	= 12 th	32 %	= 12 th 16 %	10 th 32 %	
Jiangxi University of Finance & Economics (JUFE)	14 th	29 %	= 12 th 16 %	= 11 th 30 %	
Lanzhou University School of Management	15 th	19 %	15 th 4 %	15 th 26 %	

1 Palme of Excellence - Local Reference					
Southwest University of Finance and Economics (SWUFE)	1 st	97 %	1 st 52 %	1 st 47 %	
East China Normal University (ECNU) School of Business	2 nd	42 %	3 rd 44 %	2 nd 40 %	
South China University of Technology - School of Business Administration	= 3 rd	32 %	6 th 32 %	3 rd 37 %	
Shaanxi Normal University - College of International Business	= 3 rd	32 %	= 10 th 12 %	= 4 th 32 %	
Hainan University - School of Economics	= 5 th	26 %	2 nd 48 %	= 4 th 32 %	
Zhejiang Gongshang University (ZJGSU) - College of Business Administration	= 5 th	26 %	5 th 36 %	= 8 th 28 %	
Qinghai University - School of Finance and Economics	= 5 th	26 %	7 th 24 %	= 8 th 28 %	
Tibet University - School of Economic and Management	8 th	23 %	8 th 20 %	7 th 30 %	
Shanxi University School of Management	= 9 th	19 %	4 th 40 %	= 4 th 32 %	
Hebei University School of Management	= 9 th	19 %	= 10 th 12 %	10 th 21 %	
Ningxia University - School of Economics and Management	= 9 th	19 %	= 12 th 4 %	11 th 16 %	
Inner Mongolia University of Technology (IMUT) - MBA program	= 12 th	10 %	9 th 16 %	13 th 5 %	
Xi'an Zhaohua Administration Education Institute	= 12 th	10 %	= 12 th 4 %	12 th 9 %	

Guam

2 Palmes of Excellence - Good Business School					
University of Guam - School of Business & Public Administration	1 st	71 %	1 st 60 %	1 st 86 %	

School Vote 2015 Vote 2014 Vote 2013

Hong Kong S.A.R., China

5 Palmes of Excellence - Universal Business School						
Hong Kong University of Science and Technology - HKUST Business School	1 st	432 %	1 st	392 %	1 st	368 %
The University of Hong Kong - Faculty of Business and Economics	2 nd	263 %	2 nd	236 %	2 nd	277 %
The Chinese University of Hong Kong - Faculty of Business Administration	3 rd	211 %	3 rd	204 %	3 rd	233 %
4 Palmes of Excellence - Top Business School						
City University of Hong Kong - College of Business	1 st	253 %	2 nd	172 %	1 st	240 %
The Hong Kong Polytechnic University - Faculty of Business	2 nd	175 %	1 st	184 %	2 nd	196 %
3 Palmes of Excellence - Excellent Business School						
⁽¹⁾ Hong Kong Baptist University - School of Business	1 st	55 %	-	-	-	-

Indonesia

3 Palmes of Excellence - Excellent Business School						
University of Indonesia - Faculty of Economics	1 st	146 %	1 st	116 %	1 st	158 %
IMPI International Business School	2 nd	88 %	2 nd	104 %	3 rd	51 %
Institut Teknologi Bandung - School of Business and Management	3 rd	78 %	3 rd	76 %	2 nd	82 %
2 Palmes of Excellence - Good Business School						
Gadjah Mada University - Faculty of Economics	1 st	91 %	1 st	68 %	1 st	84 %
1 Palme of Excellence - Local Reference						
Airlangga University - Faculty of Economy	1 st	29 %	2 nd	20 %	1 st	28 %
Universitas Diponegoro - Faculty of Economics	2 nd	23 %	1 st	24 %	3 rd	16 %
Prasetiya Mulya Business School	3 rd	0 %	3 rd	8 %	2 nd	25 %

Japan

5 Palmes of Excellence - Universal Business School						
Keio University - Keio Business School (KBS)	1 st	263 %	1 st	244 %	1 st	244 %
Waseda University - Graduate School of Economics and Business School	2 nd	250 %	2 nd	236 %	2 nd	205 %
4 Palmes of Excellence - Top Business School						
Kyoto University - Graduate School of Economics, Faculty of Economics	1 st	247 %	2 nd	200 %	1 st	228 %
Kobe University - Graduate School of Business Administration	2 nd	224 %	1 st	204 %	3 rd	181 %
Nagoya University of Commerce & Business (NUCB)	= 3 rd	214 %	3 rd	192 %	2 nd	182 %
Tokyo University of Science (TUS) - School of Management	= 3 rd	214 %	4 th	188 %	4 th	160 %
Hitotsubashi University - ICS - Graduate School of International Corporate Strategy	5 th	159 %	5 th	128 %	6 th	119 %
International University of Japan (IUJ) - Business School	6 th	120 %	6 th	124 %	5 th	135 %
3 Palmes of Excellence - Excellent Business School						
Meiji University - Graduate School of Global Business	1 st	110 %	1 st	92 %	3 rd	68 %
Hokkaido University - Graduate School of Economics and Business Administration	2 nd	97 %	2 nd	84 %	1 st	91 %
Ritsumeikan Asia Pacific University (APU) - Graduate School of Management	3 rd	78 %	= 3 rd	64 %	2 nd	70 %
Kansai University - Graduate School of Economics	4 th	68 %	6 th	48 %	6 th	54 %
Tohoku University - Graduate School of Economics and Management	5 th	62 %	7 th	40 %	7 th	53 %
Kyushu University - Faculty of Economics	6 th	45 %	8 th	36 %	9 th	37 %
Hosei University - Graduate School of Business Administration	= 7 th	39 %	5 th	52 %	5 th	56 %
Aoyama Gakuin University - Graduate School of International Management	= 7 th	39 %	9 th	16 %	8 th	44 %
University of Tsukuba - Graduate School of Business Sciences	9 th	32 %	= 3 rd	64 %	4 th	61 %

⁽¹⁾ New institution approved by the Eduniversal International Scientific Committee to enter in the 2015 Eduniversal Official Selection.

School Vote 2015 Vote 2014 Vote 2013

2 Palmes of Excellence - Good Business School						
Rikkyo University College of Business and Graduate School of Business	1 st	49 %	1 st	40 %	1 st	58 %
Doshisha University - Graduate School of Commerce	2 nd	36 %	2 nd	20 %	2 nd	33 %

Laos

1 Palme of Excellence - Local Reference						
National University of Laos - Faculty of Economics and Business Administration	1 st	52 %	1 st	36 %	1 st	60 %

Macao S.A.R., China

3 Palmes of Excellence - Excellent Business School						
University of Macau (UMAC) - Faculty of Business Administration	1 st	166 %	1 st	136 %	1 st	151 %

Malaysia

4 Palmes of Excellence - Top Business School						
University of Malaya - Faculty of Business and Accountancy	1 st	198 %	1 st	172 %	1 st	177 %
3 Palmes of Excellence - Excellent Business School						
Universiti Putra Malaysia (UPM) - Putra Business School	1 st	130 %	1 st	104 %	2 nd	96 %
University Sains Malaysia - School of Management and Graduate School of Business	2 nd	88 %	2 nd	84 %	3 rd	88 %
Universiti Teknologi Malaysia - International Business School (IBS)	3 rd	84 %	3 rd	68 %	1 st	98 %
2 Palmes of Excellence - Good Business School						
Universiti Kebangsaan Malaysia (UKM) - Faculty of Economics and Business	1 st	49 %	1 st	44 %	2 nd	46 %
Universiti Utara Malaysia (UUM) - Othman Yeop Abdullah Graduate School of Business	2 nd	39 %	2 nd	28 %	1 st	53 %

Mongolia

1 Palme of Excellence - Local Reference						
Mongolian University of Science and Technology (MUST) School of Business Administration and Humanities	1 st	94 %	1 st	76 %	1 st	79 %

Philippines

4 Palmes of Excellence - Top Business School						
AIM - Asian Institute of Management	1 st	192 %	1 st	200 %	1 st	235 %
3 Palmes of Excellence - Excellent Business School						
University of the Philippines - Cesar E.A. Virata School of Business	1 st	101 %	3 rd	84 %	1 st	119 %
De La Salle University Ramon V. del Rosario College of Business	2 nd	97 %	1 st	104 %	2 nd	86 %
Ateneo de Manila University - Graduate School of Business	3 rd	62 %	2 nd	88 %	3 rd	68 %
2 Palmes of Excellence - Good Business School						
University of Santo Tomas - UST Graduate School	1 st	32 %	1 st	28 %	1 st	44 %
1 Palme of Excellence - Local Reference						
University of San Carlos - School of Business Administration and Economics	1 st	23 %	1 st	32 %	1 st	23 %

Singapore

5 Palmes of Excellence - Universal Business School						
National University of Singapore - NUS Business School	1 st	448 ‰	1 st	444 ‰	1 st	400 ‰
Nanyang Business School - Nanyang Technological University (NTU)	2 nd	240 ‰	2 nd	236 ‰	3 rd	228 ‰
4 Palmes of Excellence - Top Business School						
Singapore Management University - Lee Kong Chian School of Business	1 st	266 ‰	1 st	256 ‰	1 st	221 ‰

South Korea

5 Palmes of Excellence - Universal Business School						
Seoul National University - SNU Business School	1 st	269 ‰	1 st	300 ‰	1 st	314 ‰
Korea University Business School	2 nd	240 ‰	2 nd	248 ‰	2 nd	247 ‰
Korea Advanced Institute of Science and Technology (KAIST) Business School	3 rd	231 ‰	4 th	204 ‰	4 th	219 ‰
Yonsei University - School of Business	4 th	214 ‰	3 rd	228 ‰	3 rd	230 ‰
3 Palmes of Excellence - Excellent Business School						
Hanyang University Business School (HUBS)	1 st	117 ‰	1 st	136 ‰	1 st	118 ‰
Sogang University - School of Business	2 nd	94 ‰	2 nd	112 ‰	2 nd	104 ‰
SungKyunKwan University - Graduate School of Business (SKK GSB)	3 rd	88 ‰	= 3 rd	68 ‰	4 th	88 ‰
Ewha Woman's University - School of Business	4 th	84 ‰	6 th	64 ‰	5 th	74 ‰
Pusan National University - Graduate School of Management	5 th	78 ‰	= 3 rd	68 ‰	3 rd	89 ‰
Kyung Hee University - School of Management	6 th	55 ‰	= 3 rd	68 ‰	6 th	61 ‰
Chung-Ang University School of Business	7 th	42 ‰	7 th	36 ‰	-	-
2 Palmes of Excellence - Good Business School						
Sejong University - School of Business	1 st	68 ‰	4 th	28 ‰	= 3 rd	51 ‰
Kyungpook National University - School of Business	2 nd	62 ‰	2 nd	44 ‰	= 3 rd	51 ‰
Chonnam National University - College of Business Administration	3 rd	55 ‰	1 st	48 ‰	1 st	61 ‰
Chonbuk National University - Graduate School of Business Administration	4 th	32 ‰	3 rd	32 ‰	2 nd	56 ‰
Chungnam National University - College of Economics and Management	5 th	29 ‰	5 th	24 ‰	5 th	42 ‰
1 Palme of Excellence - Local Reference						
(1) Woosung University - Solbridge International School of Business	-	-	-	-	-	-

Taiwan

5 Palmes of Excellence - Universal Business School						
National Taiwan University - College of Management	1 st	260 ‰	1 st	252 ‰	1 st	235 ‰
4 Palmes of Excellence - Top Business School						
National Chengchi University - College of Commerce	1 st	153 ‰	1 st	164 ‰	1 st	160 ‰
3 Palmes of Excellence - Excellent Business School						
National Sun Yat-Sen University - College of Management	1 st	127 ‰	1 st	140 ‰	1 st	142 ‰
National Taiwan University of Science and Technology - School of Management	2 nd	114 ‰	2 nd	104 ‰	2 nd	105 ‰
National Chiao-Tung University - College of Management	3 rd	84 ‰	4 th	56 ‰	3 rd	82 ‰
Fu Jen Catholic University - College of Management	4 th	55 ‰	3 rd	60 ‰	4 th	67 ‰
2 Palmes of Excellence - Good Business School						
National Cheng Kung University - College of Management	1 st	88 ‰	1 st	72 ‰	1 st	89 ‰

(1) New institution approved by the Eduniversal International Scientific Committee to enter in the 2015 Eduniversal Official Selection.

Thailand

4 Palmes of Excellence - Top Business School						
Chulalongkorn University - Sasin Graduate Institute of Business Administration	1 st	260 ‰	1 st	236 ‰	1 st	239 ‰
Asian Institute of Technology (AIT) - School of Management	2 nd	133 ‰	2 nd	116 ‰	2 nd	198 ‰
3 Palmes of Excellence - Excellent Business School						
Thammasat University - Faculty of Economics & Business School	1 st	192 ‰	1 st	220 ‰	1 st	189 ‰
2 Palmes of Excellence - Good Business School						
Chiang Mai University - Faculty of Business Administration	1 st	75 ‰	2 nd	44 ‰	1 st	65 ‰
Khon Kaen University - College of Graduate Study in Management	2 nd	36 ‰	1 st	60 ‰	3 rd	32 ‰
Prince of Songkla University - Faculty of Management Sciences	3 rd	26 ‰	3 rd	16 ‰	2 nd	47 ‰
(1) Kasetsart University - Faculty of Business Administration	4 th	0 ‰	2 nd	8 ‰	2 nd	37 ‰

Vietnam

2 Palmes of Excellence - Good Business School						
University of Economics - Ho Chi Minh City (UEH)	1 st	120 ‰	1 st	96 ‰	1 st	95 ‰
FPT School of Business (FSB), FPT University	2 nd	65 ‰	3 rd	44 ‰	2 nd	91 ‰
CFVG - Centre Franco-Vietnamien de Formation à la Gestion	3 rd	55 ‰	2 nd	56 ‰	3 rd	51 ‰

(1) The league downward for this institution has been approved in June 2015 by the Eduniversal International Scientific Committee.

Latin America



School	Vote 2015	Vote 2014	Vote 2013
--------	-----------	-----------	-----------

Argentina

4 Palms of Excellence - Top Business School			
IAE Business School - Universidad Austral	= 1 st	218 ‰	1 st 316 ‰ 1 st 249 ‰
Buenos Aires University (UBA) - Business School	= 1 st	218 ‰	2 nd 204 ‰ 2 nd 205 ‰
Pontificia Universidad Católica Argentina (UCA) - Escuela de Negocios	3 rd	166 ‰	3 rd 184 ‰ 3 rd 156 ‰
ICDA Universidad Católica de Córdoba	4 th	84 ‰	4 th 68 ‰ 4 th 100 ‰
3 Palms of Excellence - Excellent Business School			
Universidad Argentina de la Empresa - UADE Business School	1 st	107 ‰	2 nd 116 ‰ 1 st 112 ‰
Universidad de San Andrés - Escuela de Administración y Negocios	2 nd	97 ‰	1 st 132 ‰ 2 nd 105 ‰
Universidad Torcuato Di Tella (UTDT) - Escuela de Negocios	3 rd	81 ‰	3 rd 104 ‰ 3 rd 84 ‰
Universidad Nacional de Córdoba - Facultad de Ciencias Economicas	4 th	58 ‰	4 th 60 ‰ 5 th 53 ‰
Universidad del CEMA (UCEMA) - Departamento de Dirección de Empresas	5 th	42 ‰	5 th 40 ‰ 4 th 58 ‰
2 Palms of Excellence - Good Business School			
ITBA - Instituto Tecnológico de Buenos Aires	= 1 st	29 ‰	1 st 64 ‰ 1 st 51 ‰
Universidad Nacional de Rosario - Facultad de Ciencias Económicas y Estadística	= 1 st	29 ‰	2 nd 36 ‰ 2 nd 42 ‰
1 Palme of Excellence - Local Reference			
(1) Universidad del Litoral - Facultad de Ciencias Economicas	-	-	- - - -

Barbados

3 Palms of Excellence - Excellent Business School			
The University of the West Indies - Cave Hill - Department of Management Studies	1 st	97 ‰	1 st 96 ‰ 1 st 98 ‰

Belize

1 Palme of Excellence - Local Reference			
University of Belize - Faculty of Management and Social Sciences	1 st	71 ‰	1 st 84 ‰ 1 st 60 ‰

Bolivia

2 Palms of Excellence - Good Business School			
Universidad Católica Boliviana 'San Pablo' - Escuela de la Producción y la Competitividad	1 st	110 ‰	1 st 108 ‰ 1 st 118 ‰
Universidad Mayor de San Simón - Facultad de Ciencias Económicas	2 nd	36 ‰	2 nd 40 ‰ 2 nd 35 ‰

Brazil

5 Palms of Excellence - Universal Business School			
FGV - EAESP São Paulo Business Administration School	1 st	331 ‰	1 st 336 ‰ 1 st 249 ‰
4 Palms of Excellence - Top Business School			
Fundação Dom Cabral	1 st	205 ‰	2 nd 220 ‰ 2 nd 177 ‰

(1) New institution approved by the Eduniversal International Scientific Committee to enter in the 2015 Eduniversal Official Selection.

School	Vote 2015	Vote 2014	Vote 2013
--------	-----------	-----------	-----------

4 Palms of Excellence - Top Business School			
COPPEAD - UFRJ - The Graduate School of Business	2 nd	201 ‰	2 nd 196 ‰ 1 st 205 ‰
BSP - Business School São Paulo	3 rd	192 ‰	3 rd 156 ‰ 4 th 151 ‰
FEA-USP - Universidade de São Paulo - Faculdade de Economia Administração e Contabilidade	4 th	156 ‰	4 th 136 ‰ 3 rd 167 ‰
3 Palms of Excellence - Excellent Business School			
INSPER São Paulo	1 st	123 ‰	1 st 112 ‰ 1 st 86 ‰
EBAPE/FGV - Fundação Getulio Vargas - Escola Brasileira de Administração Pública e de Empresas	2 nd	97 ‰	2 nd 96 ‰ 2 nd 82 ‰
Faculdade FIA de Administração e Negócios	3 rd	65 ‰	3 rd 84 ‰ 3 rd 56 ‰
EA - Escola de Administração da Universidade Federal do Rio Grande do Sul	= 4 th	58 ‰	4 th 52 ‰ 4 th 51 ‰
(1) Universidade Federal do Paraná - DAGA Escola de Administração	= 4 th	58 ‰	= 3 rd 40 ‰ 3 rd 40 ‰
IAG PUC Rio Escola de Negócios	6 th	55 ‰	5 th 32 ‰ 5 th 42 ‰
2 Palms of Excellence - Good Business School			
(1) Pontificia Universidade Católica do Paraná - PUCPR Escola de Negócios	1 st	101 ‰	1 st 112 ‰ 1 st 84 ‰
Universidade Presbiteriana Mackenzie - Centro de Ciências Sociais e Aplicadas - CCSA	2 nd	39 ‰	= 3 rd 40 ‰ 4 th 30 ‰
UFMG/FACE - Universidade Federal de Minas Gerais - Faculdade de Ciências Econômicas	3 rd	36 ‰	2 nd 44 ‰ 2 nd 46 ‰
(2) Unisinos Business School	4 th	29 ‰	- - - -
1 Palme of Excellence - Local Reference			
UFPE - Universidade Federal de Pernambuco - Departamento de Ciências Administrativas	1 st	39 ‰	3 rd 40 ‰ 3 rd 25 ‰
Universidade Federal Da Bahia - Escola de Administração	2 nd	29 ‰	2 nd 48 ‰ 2 nd 46 ‰

Cayman Islands

2 Palms of Excellence - Good Business School			
International College of the Cayman Islands	1 st	45 ‰	1 st 44 ‰ 1 st 51 ‰

Chile

5 Palms of Excellence - Universal Business School			
Pontificia Universidad Católica de Chile - Escuela de Administración	1 st	276 ‰	1 st 292 ‰ 1 st 289 ‰
4 Palms - Top Business School			
Universidad de Chile - Escuela de Postgrado Economía y Negocios	1 st	276 ‰	= 1 st 216 ‰ 2 nd 175 ‰
Universidad Adolfo Ibañez - Business School	2 nd	188 ‰	= 1 st 216 ‰ 1 st 184 ‰
3 Palms of Excellence of Excellence - Excellent Business School			
Universidad de Santiago de Chile - Facultad de Administración y Economía	1 st	140 ‰	1 st 120 ‰ 1 st 139 ‰
ESE Business School - Universidad de Los Andes	2 nd	101 ‰	2 nd 104 ‰ 2 nd 123 ‰
Universidad Católica de Valparaíso - Facultad de Ciencias Economicas y Administrativas	3 rd	88 ‰	3 rd 64 ‰ 3 rd 86 ‰
Universidad Alberto Hurtado - Facultad de Economía y Negocios	4 th	49 ‰	4 th 56 ‰ 4 th 40 ‰

Colombia

4 Palms of Excellence - Top Business School			
Universidad de los Andes, School of Management	1 st	276 ‰	1 st 244 ‰ 1 st 235 ‰

(1) The league upward for this institution has been approved in June 2015 by the Eduniversal International Scientific Committee.

(2) New institution approved by the Eduniversal International Scientific Committee to enter in the 2015 Eduniversal Official Selection.

School	Vote 2015		Vote 2014		Vote 2013	
--------	-----------	--	-----------	--	-----------	--

2 Palms of Excellence - Good Business School						
Pontificia Universidad Javeriana - Facultad de Ciencias Económicas y Administrativas	1 st	127 %	1 st	104 %	1 st	119 %
Universidad EAFIT - Escuela de Administración	2 nd	68 %	= 2 nd	68 %	4 th	49 %
Universidad Externado de Colombia - School of Management	3 rd	65 %	4 th	56 %	2 nd	70 %
Universidad Nacional de Colombia - Facultad de Ciencias Económicas	4 th	52 %	= 2 nd	68 %	3 rd	61 %
Universidad de Antioquia - Facultad de Ciencias Económicas	5 th	29 %	5 th	28 %	5 th	42 %

Costa Rica

5 Palms of Excellence - Universal Business School						
INCAE Business School	1 st	208 %	1 st	244 %	1 st	226 %

2 Palms of Excellence - Good Business School						
Universidad de Costa Rica - Escuela de Administración de Negocios	1 st	49 %	1 st	24 %	1 st	42 %

Cuba

1 Palme of Excellence - Local Reference						
Universidad de la Habana - Facultad de Economía	1 st	136 %	1 st	124 %	1 st	114 %

Dominican Republic

2 Palms of Excellence - Good Business School						
Pontificia Universidad Católica Madre y Maestra - Departamento de Administración de Empresas	1 st	71 %	1 st	64 %	1 st	60 %

1 Palme of Excellence - Local Reference						
Universidad Autónoma da Santo Domingo - Facultad de Ciencias Económicas y Sociales	1 st	29 %	1 st	24 %	1 st	28 %

Ecuador

3 Palms of Excellence - Excellent Business School						
Universidad del Pacífico - Escuela de Negocios	1 st	88 %	1 st	72 %	1 st	84 %
ESPAE - Escuela de Postgrado en Administración de Empresas - ESPOL - Escuela Superior Politécnica del Litoral	2 nd	65 %	2 nd	52 %	2 nd	51 %

El Salvador

1 Palme of Excellence - Local Reference						
Universidad de El Salvador - Facultad de Ciencias Economicas	1 st	88 %	1 st	64 %	1 st	72 %

Guatemala

2 Palms of Excellence - Good Business School						
Universidad Francisco Marroquín (UFM) - Escuela de Negocios	1 st	81 %	1 st	76 %	1 st	81 %

School	Vote 2015		Vote 2014		Vote 2013	
--------	-----------	--	-----------	--	-----------	--

Guyana

1 Palme of Excellence - Local Reference						
University of Guyana - Faculty of Social Sciences	1 st	49 %	1 st	52 %	1 st	56 %

Haiti

1 Palme of Excellence - Local Reference						
Université Notre-Dame d'Haïti - Faculté des Sciences Economiques, Sociales et Politiques (FSESP)	1 st	55 %	1 st	52 %	1 st	72 %

Honduras

2 Palms of Excellence - Good Business School						
Universidad Católica de Honduras (UNICAH) - Facultad de Administración de Empresas	1 st	88 %	1 st	52 %	1 st	67 %

Jamaica

2 Palms of Excellence - Good Business School						
The University of the West Indies - Mona School of Business and Management	1 st	84 %	1 st	72 %	1 st	102 %

Mexico

5 Palms of Excellence - Universal Business School						
EGADE Business School - Tecnológico de Monterrey	1 st	347 %	1 st	356 %	1 st	325 %

4 Palms of Excellence - Top Business School						
IPADE Business School	1 st	244 %	1 st	256 %	1 st	235 %
ITAM - Instituto Tecnológico Autónomo de México	2 nd	224 %	2 nd	240 %	2 nd	196 %
⁽¹⁾ Universidad de Monterrey - UDEM Business School	3 rd	221 %	1 st	180 %	1 st	205 %

3 Palms of Excellence - Excellent Business School						
Universidad Nacional Autónoma de México (UNAM) - Facultad de Contaduría y Administración	1 st	110 %	2 nd	88 %	2 nd	112 %
Universidad de las Américas (UDLA) - Puebla - Escuela de Negocios y Economía	2 nd	68 %	4 th	68 %	3 rd	91 %
Universidad de Guadalajara - CUCEA - Centro Universitario de Ciencias Economico Administrativas	3 rd	49 %	6 th	44 %	5 th	63 %
Universidad Anáhuac México Norte - Facultad de Economía y Negocios	= 4 th	26 %	5 th	48 %	6 th	58 %
Universidad Anáhuac México Sur - Facultad de Economía y Negocios	= 4 th	26 %	= 7 th	40 %	9 th	46 %

2 Palms of Excellence - Good Business School						
Universidad de las Américas - A.C.	1 st	32 %	= 2 nd	36 %	1 st	42 %
Universidad Autónoma Metropolitana - División de Ciencias Sociales y Humanidades	2 nd	29 %	1 st	40 %	3 rd	26 %
Universidad Autónoma de Nuevo León - Facultad de Contaduría Pública y Administración	3 rd	26 %	= 2 nd	36 %	2 nd	35 %

1 Palme of Excellence - Local Reference						
Universidad Autónoma de San Luis Potosí - Facultad de Contaduría y Administración	1 st	16 %	1 st	28 %	1 st	21 %

⁽¹⁾ The league upward for this institution has been approved in June 2015 by the Eduniversal International Scientific Committee.

School Vote 2015 Vote 2014 Vote 2013

Nicaragua

1 Palme of Excellence - Local Reference						
Universidad Nacional Autónoma de Nicaragua - Facultad de Ciencias Económicas	1 st	55 %	1 st	48 %	1 st	61 %

Panama

2 Palmes of Excellence - Good Business School						
Universidad Católica Santa María La Antigua (USMA) - Facultad de Negocios	1 st	65 %	1 st	40 %	1 st	65 %
Universidad Latina de Panamá - Facultad de Negocios	2 nd	23 %	2 nd	32 %	2 nd	33 %

Paraguay

1 Palme of Excellence - Local Reference						
EDAN - Escuela de Administración de Negocios	1 st	45 %	= 1 st	28 %	= 1 st	42 %
Universidad Autónoma de Asunción - Facultad de Ciencias Económicas y Empresariales	2 nd	39 %	= 1 st	28 %	= 1 st	42 %

Peru

4 Palmes of Excellence - Top Business School						
Pontificia Universidad Católica del Perú - CENTRUM Católica	1 st	250 %	1 st	240 %	1 st	230 %
Universidad ESAN - Graduate School of Business	2 nd	234 %	2 nd	236 %	3 rd	179 %
Universidad del Pacífico - Business School	3 rd	201 %	3 rd	204 %	2 nd	191 %

3 Palmes of Excellence - Excellent Business School						
Universidad San Ignacio de Loyola (USIL) - Escuela de Postgrado	1 st	55 %	1 st	76 %	1 st	81 %
PAD Escuela de Dirección-Universidad de Piura	2 nd	29 %	2 nd	32 %	2 nd	37 %

2 Palmes of Excellence - Good Business School						
Universidad Peruana de Ciencias Aplicadas (UPC) Graduate School	1 st	29 %	1 st	32 %	1 st	53 %

Puerto Rico

2 Palmes of Excellence - Good Business School						
Universidad de Puerto Rico - Recinto de Río Piedras - Facultad de Administración de Empresas	= 1 st	55 %	1 st	64 %	1 st	79 %
Pontificia Universidad Católica de Puerto Rico - Colegio de Administración de Empresas	= 1 st	55 %	= 2 nd	44 %	= 2 nd	47 %
Universidad de Puerto Rico - Recinto Mayagüez - Colegio de Administración de Empresas	3 rd	42 %	= 2 nd	44 %	= 2 nd	47 %

Suriname

1 Palme of Excellence - Local Reference						
Anton de Kom University - Faculty of Social Sciences	1 st	39 %	1 st	40 %	1 st	46 %

Trinidad and Tobago

2 Palmes of Excellence - Good Business School						
The University of the West Indies - Arthur Lok Jack Graduate School of Business	1 st	78 %	1 st	72 %	1 st	98 %

School Vote 2015 Vote 2014 Vote 2013

Uruguay

3 Palmes of Excellence - Excellent Business School						
Universidad ORT - Facultad de Administración y Ciencias Sociales	1 st	52 %	1 st	52 %	1 st	49 %

2 Palmes of Excellence - Good Business School						
Universidad Católica del Uruguay - Facultad de Ciencias Empresariales	1 st	101 %	1 st	80 %	1 st	104 %

Venezuela

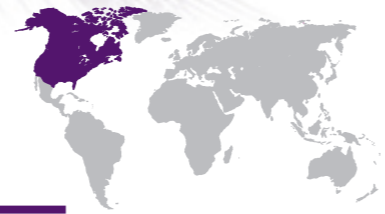
4 Palmes of Excellence - Top Business School						
IESA - Instituto de Estudios Superiores de Administración	1 st	127 %	1 st	160 %	1 st	160 %

1 Palme of Excellence - Local Reference						
Universidad de Los Andes - Venezuela - Facultad de Ciencias Económicas y Sociales	= 1 st	49 %	1 st	68 %	1 st	74 %
Universidad Central de Venezuela - Facultad de Ciencias Económicas y Sociales	= 1 st	49 %	2 nd	44 %	3 rd	39 %
Universidad Simón Bolívar - Departamento de Ciencias Económicas y Administrativas	3 rd	36 %	3 rd	36 %	2 nd	44 %

US Virgin Islands

2 Palmes of Excellence - Good Business School						
University of the Virgin Islands (UVI) - Business Division	1 st	55 %	1 st	56 %	1 st	68 %

North America



School Vote 2015 Vote 2014 Vote 2013

Canada

5 Palmes of Excellence - Universal Business School						
McGill University - Desautels Faculty of Management	1 st	597 ‰	1 st	576 ‰	1 st	539 ‰
HEC Montréal	2 nd	471 ‰	2 nd	432 ‰	2 nd	395 ‰
University of Toronto - Joseph L. Rotman School of Management	3 rd	386 ‰	3 rd	376 ‰	3 rd	391 ‰
Queen's University - Queen's School of Business	4 th	360 ‰	4 th	328 ‰	5 th	335 ‰
University of British Columbia - Sauder School of Business	5 th	341 ‰	= 5 th	284 ‰	4 th	340 ‰
Western University - Ivey School of Business	6 th	328 ‰	7 th	248 ‰	6 th	319 ‰
York University - Schulich School of Business	7 th	318 ‰	= 5 th	284 ‰	7 th	307 ‰
4 Palmes of Excellence - Top Business School						
Concordia University - John Molson School of Business	1 st	263 ‰	5 th	176 ‰	3 rd	198 ‰
Simon Fraser University - Beedie School of Business	2 nd	253 ‰	1 st	236 ‰	1 st	240 ‰
University of Alberta - School of Business	3 rd	237 ‰	2 nd	200 ‰	2 nd	221 ‰
University of Ottawa - Telfer School of Management	4 th	208 ‰	4 th	180 ‰	4 th	184 ‰
Université Laval - Faculté des Sciences de l'Administration	5 th	179 ‰	3 rd	184 ‰	5 th	182 ‰
Université du Québec à Montréal (UQAM) - École des Sciences de la Gestion (ESG)	6 th	149 ‰	6 th	152 ‰	6 th	170 ‰
McMaster University - DeGroote School of Business	7 th	149 ‰	8 th	96 ‰	7 th	147 ‰
University of Calgary - Haskayne School of Business	8 th	130 ‰	7 th	116 ‰	8 th	133 ‰
3 Palmes of Excellence - Excellent Business School						
Carleton University - Sprott School of Business	1 st	133 ‰	3 rd	88 ‰	4 th	72 ‰
University of Victoria - Peter B. Gustavson School of Business	2 nd	107 ‰	1 st	128 ‰	= 1 st	100 ‰
Brock University - Faculty of Business	3 rd	97 ‰	2 nd	104 ‰	= 1 st	100 ‰
Wilfrid Laurier University - School of Business and Economics	4 th	81 ‰	5 th	76 ‰	3 rd	82 ‰
Dalhousie University - Faculty of Management	= 5 th	71 ‰	4 th	80 ‰	5 th	67 ‰
University of New Brunswick - Saint John	= 5 th	71 ‰	9 th	44 ‰	9 th	47 ‰
Saint Mary's University - Sobey School of Business	= 7 th	52 ‰	6 th	64 ‰	8 th	58 ‰
Université de Sherbrooke - Faculté d'Administration	= 7 th	52 ‰	= 7 th	52 ‰	= 6 th	65 ‰
Memorial University of Newfoundland - Faculty of Business Administration	= 7 th	52 ‰	10 th	32 ‰	10 th	35 ‰
University of Manitoba - Asper School of Business	= 10 th	49 ‰	= 7 th	52 ‰	= 6 th	65 ‰
(1) University of Saskatchewan - Edwards School of Business	= 10 th	49 ‰	1 st	44 ‰	1 st	44 ‰

United States of America

5 Palmes of Excellence - Universal Business School						
Harvard Business School	1 st	607 ‰	1 st	664 ‰	1 st	626 ‰
Yale University - Yale School of Management	2 nd	575 ‰	2 nd	576 ‰	2 nd	537 ‰
Stanford University - Graduate School of Business	3 rd	526 ‰	3 rd	544 ‰	3 rd	502 ‰
MIT - Sloan School of Management	4 th	464 ‰	4 th	468 ‰	= 4 th	453 ‰
Duke University - Fuqua School of Business	5 th	451 ‰	6 th	416 ‰	= 6 th	418 ‰

(1) The league upward for this institution has been approved in June 2015 by the Eduniversal International Scientific Committee.

School Vote 2015 Vote 2014 Vote 2013

5 Palmes of Excellence - Universal Business School						
Columbia University - Columbia Business School (CBS)	6 th	442 ‰	7 th	412 ‰	= 4 th	453 ‰
University of California - Berkeley Haas School of Business	7 th	435 ‰	5 th	448 ‰	= 6 th	418 ‰
Cornell University - Samuel Curtis Johnson Graduate School of Management	8 th	422 ‰	8 th	404 ‰	8 th	398 ‰
Northwestern University - Kellogg School of Management	9 th	403 ‰	= 11 th	348 ‰	9 th	372 ‰
University of Chicago - Booth School of Business	10 th	393 ‰	10 th	352 ‰	11 th	363 ‰
University of Pennsylvania - Wharton School	11 th	377 ‰	9 th	372 ‰	12 th	361 ‰
New York University (NYU) - Leonard N. Stern School of Business	12 th	367 ‰	= 11 th	348 ‰	10 th	377 ‰
University of California Los Angeles (UCLA) - John E. Anderson School of Management	13 th	347 ‰	15 th	280 ‰	14 th	335 ‰
Dartmouth College - Tuck Business School	14 th	341 ‰	13 th	336 ‰	15 th	332 ‰
Carnegie Mellon University - Carnegie Bosch Institute - Tepper School of Business	15 th	315 ‰	14 th	292 ‰	13 th	339 ‰
Purdue University - Krannert School of Management	16 th	292 ‰	17 th	256 ‰	18 th	258 ‰
University of Virginia - Darden School of Business	17 th	273 ‰	19 th	208 ‰	20 th	230 ‰
University of North Carolina at Chapel Hill - Kenan-Flagler Business School	18 th	269 ‰	16 th	276 ‰	19 th	235 ‰
University of Texas at Austin - McCombs School of Business	19 th	260 ‰	18 th	248 ‰	17 th	265 ‰
University of Michigan - Stephen M. Ross School of Business	20 th	250 ‰	= 20 th	196 ‰	16 th	268 ‰
Indiana University, Bloomington - Kelley School of Business	21 st	240 ‰	= 20 th	196 ‰	22 nd	191 ‰
Emory University - Goizueta Business School	22 nd	234 ‰	23 rd	180 ‰	21 st	225 ‰
4 Palmes of Excellence - Top Business School						
Babson College - F.W. Olin Graduate School of Business	1 st	403 ‰	1 st	400 ‰	1 st	318 ‰
Boston University (BU) - School of Management	2 nd	302 ‰	2 nd	260 ‰	2 nd	288 ‰
Texas A&M University - Mays Business School	3 rd	279 ‰	3 rd	240 ‰	4 th	235 ‰
Arizona State University - W. P. Carey School of Business	4 th	276 ‰	= 6 th	212 ‰	= 9 th	202 ‰
Johns Hopkins University - Carey Business School	5 th	244 ‰	4 th	232 ‰	5 th	223 ‰
Boston College - Carroll School of Management	6 th	234 ‰	10 th	184 ‰	6 th	207 ‰
Pennsylvania State University - Smeal College of Business Administration	= 7 th	221 ‰	8 th	208 ‰	= 12 th	195 ‰
The Ohio State University - Fisher College of Business	= 7 th	221 ‰	= 12 th	176 ‰	7 th	205 ‰
University of Illinois at Urbana-Champaign (UIUC) - College of Business	9 th	214 ‰	11 th	180 ‰	8 th	204 ‰
Thunderbird School of Global Management	= 10 th	211 ‰	= 6 th	212 ‰	3 rd	249 ‰
Michigan State University - The Eli Broad College of Business	= 10 th	211 ‰	9 th	204 ‰	= 9 th	202 ‰
University of Wisconsin, Madison - School of Business	= 12 th	205 ‰	= 16 th	172 ‰	15 th	174 ‰
University of Southern California (USC) - Marshall School of Business	= 12 th	205 ‰	= 16 th	172 ‰	18 th	163 ‰
Georgetown University - McDonough School of Business	= 14 th	195 ‰	= 12 th	176 ‰	= 12 th	195 ‰
University of California, Irvine - The Paul Merage School of Business	= 14 th	195 ‰	18 th	164 ‰	= 22 nd	142 ‰
University of Washington - Micheal G Foster Business School	= 14 th	195 ‰	= 25 th	136 ‰	17 th	165 ‰
Rutgers Business School - The State University of New Jersey	= 14 th	195 ‰	= 25 th	136 ‰	= 27 th	135 ‰
Bentley University - The McCallum Graduate School of Business	= 18 th	188 ‰	5 th	228 ‰	19 th	161 ‰
Case Western Reserve University - Weatherhead School of Management	= 18 th	188 ‰	= 12 th	176 ‰	11 th	196 ‰
University of Maryland - Robert H. Smith School of Business	20 th	185 ‰	= 21 st	144 ‰	= 20 th	144 ‰
(1) Vanderbilt University - Owen Graduate School of Management	= 21 st	182 ‰	22 nd	188 ‰	23 rd	160 ‰
Rice University - Jesse H. Jones Graduate School of Management	= 21 st	182 ‰	= 12 th	176 ‰	= 20 th	144 ‰
University of Pittsburgh - The Joseph M. Katz Graduate School of Business	= 21 st	182 ‰	19 th	152 ‰	= 22 nd	142 ‰
University of California - Davis Graduate School of Management	= 21 st	182 ‰	= 25 th	136 ‰	16 th	168 ‰
Washington University in Saint Louis - John M. Olin Business School	25 th	179 ‰	= 23 rd	140 ‰	24 th	123 ‰
The University of Arizona - Eller College of Management	26 th	169 ‰	= 29 th	128 ‰	31 st	125 ‰
Georgia Institute of Technology - College of Management	= 27 th	166 ‰	20 th	148 ‰	24 th	140 ‰
George Washington University - GWU School of Business	= 28 th	166 ‰	= 21 st	144 ‰	14 th	179 ‰

(1) The league downward for this institution has been approved in June 2015 by the Eduniversal International Scientific Committee.

School	Vote 2015	Vote 2014	Vote 2013
4 Palmes of Excellence - Top Business School			
University of Minnesota - Curtis L. Carlson School of Management	= 29 th 159 ‰	= 25 th 136 ‰	= 27 th 135 ‰
University of San Diego (USD) - School of Business Administration	= 29 th 159 ‰	= 29 th 128 ‰	= 30 th 126 ‰
University of Rochester - Simon Graduate School of Business	31 st 156 ‰	= 29 th 128 ‰	26 th 137 ‰
University of Massachusetts, Amherst - Isenberg School of Management	32 nd 149 ‰	= 35 th 120 ‰	= 27 th 135 ‰
Temple University - Fox School of Business and Management	= 33 th 140 ‰	= 23 rd 140 ‰	39 th 98 ‰
University of Notre Dame - Mendoza College of Business	= 33 th 140 ‰	= 29 th 128 ‰	25 th 139 ‰
University of Colorado at Boulder - Leeds School of Business	= 35 th 130 ‰	= 33 rd 124 ‰	36 th 112 ‰
University of Florida - Warrington College of Business Administration	= 35 th 130 ‰	37 th 104 ‰	33 rd 121 ‰
Georgia State University - J. Mack Robinson College of Business	37 th 120 ‰	= 44 th 76 ‰	34 th 116 ‰
Brigham Young University - Marriott School of Management	38 th 117 ‰	= 38 th 92 ‰	35 th 114 ‰
University of South Carolina - Moore School of Business	39 th 114 ‰	= 40 th 88 ‰	= 37 th 102 ‰
A.B. Freeman School of Business - Tulane University	40 th 110 ‰	= 33 rd 124 ‰	32 nd 123 ‰
Virginia Polytechnic Institute and State University	41 st 101 ‰	= 42 nd 80 ‰	43 rd 88 ‰
Baruch College, City University of New York - Zicklin School of Business	= 42 nd 97 ‰	= 35 th 120 ‰	= 37 th 102 ‰
Northeastern University - College of Business Administration	= 42 nd 97 ‰	= 46 th 72 ‰	41 st 91 ‰
University of Georgia - Terry College of Business	44 th 91 ‰	= 42 nd 80 ‰	42 nd 89 ‰
Southern Methodist University - Cox School of Business	= 45 th 88 ‰	= 40 th 88 ‰	40 th 95 ‰
University of Miami - School of Business	= 45 th 88 ‰	= 44 th 76 ‰	44 th 84 ‰
Wake Forest University - Babcock Graduate School of Management	47 th 84 ‰	= 38 th 92 ‰	45 th 81 ‰
University of Iowa - Henry B. Tippie College of Business	48 th 78 ‰	= 46 th 72 ‰	= 46 th 70 ‰
University of Connecticut - School of Business	49 th 65 ‰	48 th 64 ‰	= 46 th 70 ‰
3 Palmes of Excellence - Excellent Business School			
George Mason University - The School of Management	= 1 st 123 ‰	= 2 nd 104 ‰	= 1 st 116 ‰
Syracuse University - Whitman School of Management	= 1 st 123 ‰	= 2 nd 104 ‰	= 3 rd 100 ‰
Pepperdine University - Graziadio School of Business and Management	3 rd 120 ‰	1 st 112 ‰	5 th 98 ‰
University of Texas at Dallas Naveen Jindal School of Management	4 th 117 ‰	= 8 th 76 ‰	= 3 rd 100 ‰
University of California, Riverside - A. Gary Anderson Graduate School of Management	5 th 94 ‰	= 6 th 80 ‰	11 th 77 ‰
Fordham University - Graduate School of Business Administration	6 th 91 ‰	5 th 88 ‰	9 th 84 ‰
San Diego State University - College of Business Administration	= 7 th 88 ‰	4 th 100 ‰	= 6 th 96 ‰
Claremont Graduate University - Peter F. Drucker and Masatoshi Ito Graduate School of Management	= 7 th 88 ‰	= 11 th 72 ‰	= 1 st 116 ‰
Washington State University - College of Business	= 7 th 88 ‰	= 17 th 60 ‰	= 6 th 96 ‰
DePaul University - College of Commerce & Kellstadt Graduate School of Business	= 10 th 84 ‰	= 6 th 80 ‰	= 13 th 68 ‰
University at Buffalo - State University of New York (SUNY) - School of Management	= 10 th 84 ‰	= 13 th 68 ‰	12 th 70 ‰
Rochester Institute of Technology - E. Philip Saunders College of Business	12 th 78 ‰	= 13 th 68 ‰	20 th 61 ‰
Clemson University - College of Business and Behavioral Science	= 13 th 71 ‰	= 17 th 60 ‰	16 th 67 ‰
Drexel University - Lebow College of Business	= 13 th 71 ‰	= 21 st 56 ‰	= 21 st 60 ‰
University of Richmond - Robins School of Business	15 th 68 ‰	16 th 64 ‰	= 42 nd 42 ‰
Pace University - Lubin School of Business	16 th 62 ‰	= 21 st 56 ‰	= 18 th 63 ‰
Loyola University Chicago - Graduate School of Business	= 17 th 58 ‰	= 8 th 76 ‰	8 th 88 ‰
University of North Carolina at Charlotte - Belk College of Business	= 17 th 58 ‰	= 8 th 76 ‰	= 13 th 68 ‰
Auburn University - College of Business	= 17 th 58 ‰	= 11 th 72 ‰	17 th 65 ‰
University of Texas at San Antonio (UTSA) - College of Business	= 17 th 58 ‰	= 17 th 60 ‰	= 13 th 68 ‰
Baylor University - Hankamer School of Business	= 17 th 58 ‰	= 17 th 60 ‰	23 rd 58 ‰
Oklahoma State University - William S. Spears School of Business	= 17 th 58 ‰	= 27 th 48 ‰	= 28 th 53 ‰
University of Oregon - The Charles H. Lundquist College of Business	= 17 th 58 ‰	= 32 nd 44 ‰	= 24 th 56 ‰

School	Vote 2015	Vote 2014	Vote 2013
3 Palmes of Excellence - Excellent Business School			
University of Denver - Daniels College of Business	= 17 th 58 ‰	= 32 nd 44 ‰	= 30 th 51 ‰
College of William and Mary Mason School of Business	= 17 th 58 ‰	= 40 th 40 ‰	= 24 th 56 ‰
University of San Francisco - School of Management	= 26 th 55 ‰	= 21 st 56 ‰	10 th 81 ‰
Howard University - School of Business	= 26 th 55 ‰	= 25 th 52 ‰	= 28 th 53 ‰
University of Utah - David Eccles School of Business	28 th 52 ‰	= 13 th 68 ‰	= 30 th 51 ‰
Kansas State University - College of Business Administration	29 th 49 ‰	= 27 th 48 ‰	= 18 th 63 ‰
American University - Kogod School of Business	= 30 th 45 ‰	= 25 th 52 ‰	= 24 th 56 ‰
Lehigh University - College of Business and Economics	= 30 th 45 ‰	= 47 th 36 ‰	= 50 th 39 ‰
The University of New Mexico - The Anderson School of Management	= 30 th 45 ‰	= 56 th 28 ‰	= 35 th 46 ‰
Loyola College in Maryland - Joseph A. Sellinger School of Business and Management	= 33 rd 42 ‰	= 27 th 48 ‰	= 33 rd 47 ‰
University of Alabama at Birmingham - School of Business	= 33 rd 42 ‰	= 40 th 40 ‰	= 35 th 46 ‰
Rensselaer Polytechnic Institute - Lally School of Management and Technology	= 33 rd 42 ‰	= 47 th 36 ‰	= 30 th 51 ‰
Villanova University - Villanova School of Business	= 36 th 39 ‰	= 21 st 56 ‰	= 45 th 40 ‰
Louisiana State University - E. J. Ourso College of Business	= 36 th 39 ‰	= 32 nd 44 ‰	= 21 st 60 ‰
University of Tennessee at Knoxville - College of Business Administration	= 36 th 39 ‰	= 40 th 40 ‰	= 33 rd 47 ‰
University of Vermont - School of Business Administration	= 36 th 39 ‰	= 40 th 40 ‰	= 45 th 40 ‰
University of Arkansas at Fayetteville - Sam M. Walton College of Business	= 36 th 39 ‰	= 47 th 36 ‰	= 52 nd 35 ‰
Worcester Polytechnic Institute - Department of Management	= 36 th 39 ‰	= 61 st 24 ‰	= 67 th 19 ‰
Santa Clara University - Leavey School of Business	= 42 nd 36 ‰	= 32 nd 44 ‰	= 45 th 40 ‰
Marquette University - College of Business Administration	= 42 nd 36 ‰	= 47 th 36 ‰	= 45 th 40 ‰
Bradley University - Foster College of Business Administration	= 42 nd 36 ‰	= 56 th 28 ‰	= 35 th 46 ‰
Hofstra University - Frank G. Zarb School for Business	= 42 nd 36 ‰	= 63 rd 20 ‰	73 th 16 ‰
University of Louisville - College of Business	= 46 th 32 ‰	= 51 st 32 ‰	54 th 33 ‰
Mississippi State University - College of Business	= 46 th 32 ‰	= 56 th 28 ‰	= 40 th 44 ‰
University of Montana - School of Business Administration	= 46 th 32 ‰	= 56 th 28 ‰	= 58 th 30 ‰
Monterey Institute of International Studies - Fisher Graduate School of International Business	= 46 th 32 ‰	= 56 th 28 ‰	= 61 st 26 ‰
Saint Louis University - John Cook School of Business	= 50 th 29 ‰	= 27 th 48 ‰	27 th 54 ‰
University of Missouri - Robert J. Trulaske, Sr. College of Business	= 50 th 29 ‰	= 32 nd 44 ‰	= 40 th 44 ‰
Loyola Marymount University - College of Business	= 50 th 29 ‰	= 40 th 40 ‰	= 42 nd 42 ‰
West Virginia University - College of Business and Economics	= 50 th 29 ‰	= 51 st 32 ‰	= 42 nd 42 ‰
University of Tulsa - College of Business Administration	= 50 th 29 ‰	= 51 st 32 ‰	= 67 th 19 ‰
Suffolk University - Sawyer Business School	= 55 th 26 ‰	= 27 th 48 ‰	= 55 th 32 ‰
University of Mississippi - Ole Miss School of Business	= 55 th 26 ‰	= 32 nd 44 ‰	= 35 th 46 ‰
University of Delaware - Alfred Lerner College of Business and Economics	= 55 th 26 ‰	= 32 nd 44 ‰	= 52 nd 35 ‰
University of Kentucky - Gatton College of Business and Economics	= 55 th 26 ‰	= 40 th 40 ‰	= 35 th 46 ‰
Xavier University - Williams College of Business	= 55 th 26 ‰	= 40 th 40 ‰	= 45 th 40 ‰
New Jersey Institute of Technology - School of Management	= 55 th 26 ‰	= 63 rd 20 ‰	= 61 st 26 ‰
University of Wyoming - College of Business	= 55 th 26 ‰	= 63 rd 20 ‰	= 64 th 23 ‰
University of Nevada, Las Vegas - College of Business	= 55 th 26 ‰	= 63 rd 20 ‰	= 67 th 19 ‰
Saint Joseph's University - Erivan K. Haub School of Business	= 63 rd 23 ‰	= 32 nd 44 ‰	= 64 th 23 ‰
The University of Rhode Island - College of Business Administration	= 63 rd 23 ‰	= 51 st 32 ‰	60 th 28 ‰
St. John's University - Tobin College of Business	= 63 rd 23 ‰	= 61 st 24 ‰	= 64 th 23 ‰
Fairfield University - Charles F. Dolan School of Business	= 63 rd 23 ‰	= 63 rd 20 ‰	= 58 th 30 ‰
Creighton University - College of Business Administration (COBA)	= 63 rd 23 ‰	= 69 th 16 ‰	= 67 th 19 ‰
University of Tampa - John H. Sykes College of Business	= 68 th 19 ‰	= 51 st 32 ‰	= 55 th 32 ‰

School	Vote 2015	Vote 2014	Vote 2013
3 Palms of Excellence - Excellent Business School			
University of Memphis - Fogelman College of Business and economics	= 68 th 19 %	= 63 rd 20 %	= 55 th 32 %
University of Hartford - The Barney School of Business	= 68 th 19 %	= 69 th 16 %	= 50 th 39 %
Seton Hall University - W. Paul Stillman School of Business	= 68 th 19 %	= 69 th 16 %	= 67 th 19 %
University of Maine - Maine Business School	72 nd 16 %	72 nd 12 %	63 rd 25 %
University of Toledo College of Business and Innovation	73 th 13 %	73 th 8 %	74 th 12 %
Fairleigh Dickinson University - Silberman College of Business	74 th 6 %	74 th 4 %	= 67 th 19 %
2 Palms of Excellence - Good Business School			
California State University - Chico - College of Business	1 st 104 %	2 nd 80 %	2 nd 93 %
California State University - Long Beach	2 nd 88 %	1 st 84 %	1 st 95 %
The University of North Dakota - College of Business & Public Administration	3 rd 29 %	= 3 rd 28 %	3 rd 35 %
University of Alaska, Anchorage - College of Business and Public Policy	= 4 th 23 %	= 3 rd 28 %	= 6 th 26 %
Southern Illinois University Carbondale - College of Business	= 4 th 23 %	= 7 th 16 %	= 6 th 26 %
University of Alaska - Fairbanks - School of Management	= 6 th 19 %	= 5 th 20 %	4 th 32 %
University of South Dakota - Beacom School of Business	= 6 th 19 %	= 7 th 16 %	5 th 30 %
University of Idaho - College of Business and Economics	8 th 16 %	= 5 th 20 %	8 th 23 %

Oceania

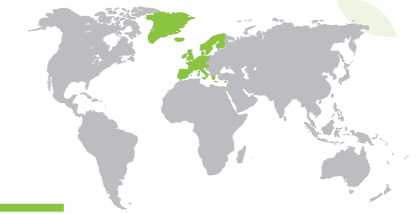


Australia

School	Vote 2015	Vote 2014	Vote 2013
5 Palms of Excellence - Universal Business School			
The University of Melbourne - Melbourne Business School	1 st 438 %	1 st 388 %	1 st 382 %
The University of Sydney Business School	2 nd 386 %	3 rd 316 %	4 th 253 %
Monash University - Monash Business School	3 rd 383 %	2 nd 332 %	2 nd 314 %
Australian School of Business (ASB) - University of New South Wales	4 th 302 %	4 th 248 %	3 rd 267 %
4 Palms of Excellence - Top Business School			
Queensland University of Technology QUT Business School	1 st 244 %	1 st 248 %	2 nd 223 %
University of Queensland - Faculty of Business, Economics and Law	2 nd 237 %	2 nd 200 %	4 th 212 %
Macquarie University - Macquarie Graduate School of Management	3 rd 234 %	3 rd 184 %	3 rd 214 %
The Australian National University (ANU) - College of Business & Economics	4 th 175 %	= 4 th 180 %	5 th 181 %
The University of Western Australia - UWA Business School	5 th 172 %	= 4 th 180 %	7 th 132 %
Curtin University - Curtin Business School	6 th 140 %	6 th 132 %	6 th 147 %
3 Palms of Excellence - Excellent Business School			
Griffith Business School, Griffith University	1 st 185 %	1 st 188 %	2 nd 174 %
Sydney Graduate School of Management	2 nd 175 %	3 rd 148 %	1 st 188 %
University of Adelaide - Business School	3 rd 162 %	2 nd 156 %	4 th 132 %
University of Technology Sydney - UTS Business	4 th 153 %	5 th 116 %	3 rd 133 %
Victoria University - Victoria Graduate School of Business	5 th 143 %	4 th 128 %	6 th 114 %
Bond University - School of Business	6 th 136 %	= 9 th 88 %	8 th 88 %
The University of Newcastle - Newcastle Business School	7 th 114 %	11 th 68 %	9 th 84 %
La Trobe University - Faculty of Law and Management	= 8 th 110 %	6 th 108 %	5 th 118 %
RMIT University - College of Business	= 8 th 110 %	8 th 92 %	7 th 105 %
University of Wollongong - Sydney Business School, Faculty of Business	= 8 th 110 %	= 9 th 88 %	10 th 81 %
University of South Australia - Business School	11 th 94 %	7 th 100 %	12 th 56 %
University of Canberra - School of Business	= 12 th 58 %	13 th 40 %	11 th 60 %
Swinburne University of Technology - Australian Graduate School of Entrepreneurship	= 12 th 58 %	15 th 32 %	14 th 47 %
University of Western Sydney - School of Business	14 th 52 %	12 th 44 %	13 th 49 %
Charles Sturt University - The International School of Business and Partnerships	15 th 26 %	14 th 36 %	15 th 28 %
2 Palms of Excellence - Good Business School			
James Cook University - School of Business	1 st 62 %	1 st 76 %	1 st 60 %
Murdoch University - Murdoch School of Management and Governance	2 nd 52 %	5 th 32 %	2 nd 53 %
Central Queensland University - School of Business and Informatics	= 3 rd 42 %	2 nd 44 %	3 rd 35 %
University of Tasmania - Tasmanian School of Business and Economics	= 3 rd 42 %	= 6 th 20 %	= 6 th 25 %
Charles Darwin University - School of Law and Business	5 th 32 %	4 th 36 %	= 6 th 25 %
Edith Cowan University - Faculty of Business	6 th 29 %	3 rd 40 %	5 th 26 %
University of the Sunshine Coast (USC) - Faculty of Business	7 th 26 %	= 6 th 20 %	9 th 19 %
University of Southern Queensland - Faculty of Business and Law	8 th 23 %	9 th 16 %	4 th 28 %
Federation University Australia Business School	9 th 10 %	= 6 th 20 %	= 6 th 25 %

School	Vote 2015	Vote 2014	Vote 2013
Fiji Islands			
3 Palmes of Excellence - Excellent Business School			
The University of the South Pacific (USP) - Faculty of Business and Economics	1 st 130 ‰	1 st 84 ‰	1 st 118 ‰
Hawaii			
4 Palmes of Excellence - Top Business School			
University of Hawaii at Manoa - Shidler College of Business	1 st 149 ‰	1 st 124 ‰	1 st 147 ‰
3 Palmes of Excellence - Excellent Business School			
University of Hawaii at Hilo - College of Business and Economics	1 st 97 ‰	1 st 64 ‰	1 st 100 ‰
New Zealand			
5 Palmes of Excellence - Universal Business School			
The University of Auckland Business School	1 st 308 ‰	1 st 292 ‰	1 st 368 ‰
4 Palmes of Excellence - Top Business School			
Auckland University of Technology Business School	1 st 240 ‰	1 st 252 ‰	1 st 226 ‰
University of Otago - Otago Business School	2 nd 240 ‰	3 rd 208 ‰	2 nd 223 ‰
Victoria University of Wellington - Faculty of Commerce and Administration	3 rd 205 ‰	2 nd 220 ‰	3 rd 193 ‰
University of Canterbury - School of Business and Economics	4 th 146 ‰	5 th 112 ‰	5 th 105 ‰
University of Waikato - Waikato Management School	5 th 123 ‰	4 th 136 ‰	4 th 139 ‰
3 Palmes of Excellence - Excellent Business School			
Massey University - College of Business	1 st 110 ‰	1 st 100 ‰	1 st 95 ‰
2 Palmes of Excellence - Good Business School			
Lincoln University - Commerce Division	1 st 42 ‰	1 st 28 ‰	1 st 30 ‰
Papua New Guinea			
2 Palmes of Excellence - Good Business School			
University of Papua New Guinea - School of Business Administration	1 st 55 ‰	1 st 36 ‰	1 st 49 ‰
1 Palme of Excellence - Local Reference			
Divine Word University (DWU) - Faculty of Business and Informatics	1 st 13 ‰	1 st 24 ‰	1 st 19 ‰
Samoa			
2 Palmes of Excellence - Good Business School			
The National University of Samoa - Faculty of Business and Entrepreneurship (FOBE)	1 st 52 ‰	1 st 48 ‰	1 st 53 ‰
Vanuatu			
1 Palme of Excellence - Local Reference			
Revans University	1 st 39 ‰	1 st 44 ‰	1 st 33 ‰

Western Europe



School	Vote 2015	Vote 2014	Vote 2013
Austria			
5 Palmes of Excellence - Universal Business School			
WU - Vienna University of Economics & Business	1 st 571 ‰	1 st 552 ‰	1 st 484 ‰
3 Palmes of Excellence - Excellent Business School			
Danube University Krems - Economics and Business Management	1 st 114 ‰	1 st 112 ‰	1 st 98 ‰
⁽¹⁾ University of Vienna – Faculty of Business Administration	-	-	-
2 Palmes of Excellence - Good Business School			
⁽²⁾ LIMAK - Austrian Business School	= 1 st 32 ‰	2 nd 24 ‰	2 nd 51 ‰
⁽¹⁾ University of Innsbruck School of Management	-	-	-
Belgium			
5 Palmes of Excellence - Universal Business School			
Université Catholique de Louvain (UCL) Louvain School of Management	1 st 367 ‰	1 st 364 ‰	1 st 316 ‰
4 Palmes of Excellence - Top Business School			
Université Libre de Bruxelles - Solvay Brussels School of Economics and Management	1 st 266 ‰	1 st 304 ‰	1 st 232 ‰
Vlerick Business School	2 nd 260 ‰	2 nd 244 ‰	2 nd 240 ‰
Katholieke Universiteit Leuven - Faculty of Business and Economics	3 rd 227 ‰	4 th 172 ‰	2 nd 200 ‰
Antwerp Management School	4 th 211 ‰	3 rd 176 ‰	3 rd 167 ‰
3 Palmes of Excellence - Excellent Business School			
⁽¹⁾ University of Liege - HEC Management School	1 st 149 ‰	-	-
Universiteit Antwerpen - Faculty of Applied Economics	2 nd 130 ‰	1 st 80 ‰	1 st 118 ‰
Cyprus			
3 Palmes of Excellence - Excellent Business School			
Cyprus International Institute of Management (CIIM)	1 st 149 ‰	1 st 128 ‰	1 st 126 ‰
Denmark			
5 Palmes of Excellence - Universal Business School			
Copenhagen Business School (CBS)	1 st 620 ‰	1 st 672 ‰	1 st 598 ‰
4 Palmes of Excellence - Top Business School			
Aarhus University - Aarhus BSS	1 st 360 ‰	1 st 340 ‰	1 st 289 ‰
3 Palmes of Excellence - Excellent Business School			
University of Southern Denmark - School of Business	1 st 91 ‰	1 st 68 ‰	1 st 74 ‰

⁽¹⁾ New institution approved by the Eduniversal International Scientific Committee to enter in the 2015 Eduniversal Official Selection.

⁽²⁾ The league downward for this institution has been approved in June 2015 by the Eduniversal International Scientific Committee.

School	Vote 2015	Vote 2014	Vote 2013
Finland			
5 Palmes of Excellence - Universal Business School			
Aalto University - School of Business	1 st 396 ‰	1 st 356 ‰	1 st 288 ‰
4 Palmes of Excellence - Top Business School			
Hanken School of Economics	1 st 256 ‰	1 st 228 ‰	1 st 209 ‰
3 Palmes of Excellence - Excellent Business School			
Turku School of Economics TSE - University of Turku	1 st 208 ‰	1 st 204 ‰	1 st 188 ‰
The Faculty of Business Studies at the University of Vaasa	2 nd 123 ‰	2 nd 112 ‰	2 nd 107 ‰
2 Palmes of Excellence - Good Business School			
⁽¹⁾ University of Oulu - Oulu Business School	1 st 101 ‰	-	-

School	Vote 2015	Vote 2014	Vote 2013
France			
5 Palmes of Excellence - Universal Business School			
INSEAD	1 st 623 ‰	1 st 660 ‰	1 st 575 ‰
HEC Paris	2 nd 581 ‰	2 nd 552 ‰	2 nd 504 ‰
ESSEC Business School	3 rd 344 ‰	3 rd 344 ‰	3 rd 305 ‰
EMLYON Business School	4 th 279 ‰	4 th 276 ‰	4 th 214 ‰
Université Paris-Dauphine	5 th 214 ‰	= 5 th 236 ‰	5 th 211 ‰
ESCP Europe Business School	6 th 185 ‰	= 5 th 236 ‰	6 th 181 ‰
4 Palmes of Excellence - Top Business School			
Grenoble Ecole de Management	1 st 357 ‰	1 st 308 ‰	1 st 304 ‰
EDHEC Business School	2 nd 273 ‰	2 nd 272 ‰	2 nd 235 ‰
Toulouse Business School	3 rd 218 ‰	= 5 th 164 ‰	8 th 133 ‰
Audencia Nantes School of Management	4 th 195 ‰	3 rd 200 ‰	3 rd 184 ‰
KEDGE Business School (Euromed Management + BEM Bordeaux Management School)	5 th 185 ‰	= 5 th 164 ‰	6 th 153 ‰
NEOMA Business School (Rouen Business School + Reims Management School)	6 th 182 ‰	4 th 180 ‰	4 th 174 ‰
Sciences po Paris	7 th 153 ‰	8 th 100 ‰	10 th 116 ‰
IAE de Paris, the Sorbonne Graduate Business School - Université Paris 1 Panthéon-Sorbonne	8 th 133 ‰	7 th 140 ‰	9 th 125 ‰
3 Palmes of Excellence - Excellent Business School			
ESC Rennes School of Business	1 st 159 ‰	1 st 152 ‰	= 5 th 104 ‰
SKEMA Business School	2 nd 133 ‰	= 4 th 132 ‰	3 rd 123 ‰
IÉSEG School of Management	3 rd 130 ‰	2 nd 140 ‰	= 5 th 104 ‰
EM Strasbourg Business School - Université de Strasbourg	4 th 123 ‰	3 rd 136 ‰	1 st 137 ‰
Université de Toulouse 1 Capitole - IAE de Toulouse and Toulouse School of Economics	5 th 120 ‰	7 th 104 ‰	7 th 93 ‰
Aix-Marseille Graduate School of Management IAE - Aix-Marseille University	6 th 114 ‰	= 4 th 132 ‰	4 th 116 ‰
IAE Lyon - Université Jean Moulin Lyon 3	7 th 110 ‰	= 8 th 96 ‰	2 nd 128 ‰
Groupe ESC Dijon Bourgogne - Burgundy School of Business	8 th 101 ‰	= 8 th 96 ‰	9 th 79 ‰
Université Panthéon-Assas (Paris II)	9 th 84 ‰	16 th 64 ‰	= 11 th 75 ‰
ESSCA Graduate School of Management	= 10 th 81 ‰	6 th 112 ‰	17 th 63 ‰
⁽²⁾ France Business School (ESC Clermont Graduate School of Management + ESCM + Brest Business School)	= 10 th 81 ‰	= 10 th 88 ‰	10 th 77 ‰
IAE de Grenoble - Université Pierre Mendès-France Grenoble 2	12 th 71 ‰	14 th 72 ‰	= 11 th 75 ‰

⁽¹⁾ New institution approved by the Eduniversal International Scientific Committee to enter in the 2015 Eduniversal Official Selection.

⁽²⁾ For the 2015/16 Deans' survey, these 3 institutions will appear separately as they were before they merged.

School	Vote 2015	Vote 2014	Vote 2013
Germany			
3 Palmes of Excellence - Excellent Business School			
Groupe Sup de Co Montpellier Business School	13 th 68 ‰	12 th 80 ‰	8 th 81 ‰
ISC Paris Business School	14 th 65 ‰	= 10 th 88 ‰	13 th 74 ‰
Télécom Ecole de Management	15 th 65 ‰	15 th 68 ‰	16 th 65 ‰
PSB Paris School of Business (ex ESG MS)	16 th 52 ‰	18 th 48 ‰	15 th 68 ‰
INSEEC Business School	17 th 49 ‰	13 th 76 ‰	14 th 70 ‰
Ecole des Ponts Business School	18 th 42 ‰	19 th 36 ‰	20 th 39 ‰
ICN Business School	19 th 36 ‰	17 th 60 ‰	= 18 th 58 ‰
2 Palmes of Excellence - Good Business School			
EDC Paris Business School	1 st 84 ‰	= 8 th 32 ‰	3 rd 60 ‰
Université Lille 1 - Faculté des Sciences Economiques et Sociales	2 nd 71 ‰	1 st 88 ‰	1 st 74 ‰
EM Normandie - Normandy Business School	3 rd 68 ‰	2 nd 64 ‰	= 5 th 44 ‰
Groupe Sup de Co La Rochelle - La Rochelle Business School	4 th 65 ‰	= 4 th 44 ‰	12 th 23 ‰
IPAG Business School	5 th 62 ‰	= 4 th 44 ‰	4 th 47 ‰
Paris ESLSCA Business School	6 th 55 ‰	3 rd 48 ‰	2 nd 63 ‰
IAE Poitiers Ecole de Management - Université de Poitiers	7 th 39 ‰	7 th 36 ‰	= 5 th 44 ‰
IAE Gustave Eiffel - Université Paris-Est Créteil	8 th 36 ‰	11 th 20 ‰	8 th 39 ‰
Groupe ESC Pau	9 th 32 ‰	10 th 28 ‰	11 th 26 ‰
Université Lumière Lyon 2 - Faculté des Sciences Economiques et de Gestion	10 th 29 ‰	6 th 40 ‰	7 th 42 ‰
Université d'Auvergne - Ecole Universitaire de Management	11 th 26 ‰	= 8 th 32 ‰	9 th 33 ‰
5 Palmes of Excellence - Universal Business School			
University of Mannheim - Mannheim Business School	1 st 409 ‰	1 st 360 ‰	1 st 368 ‰
WHU - Otto Beisheim School of Management	2 nd 256 ‰	2 nd 280 ‰	2 nd 212 ‰
EBS Universität für Wirtschaft und Recht - EBS Business School	3 rd 221 ‰	3 rd 196 ‰	3 rd 188 ‰
4 Palmes of Excellence - Top Business School			
Frankfurt School of Finance & Management	1 st 269 ‰	1 st 232 ‰	1 st 244 ‰
University of Cologne - Faculty of Management and Social Sciences	2 nd 250 ‰	2 nd 224 ‰	2 nd 218 ‰
HHL - Leipzig Graduate School of Management	3 rd 192 ‰	3 rd 196 ‰	4 th 182 ‰
Goethe University Frankfurt am Main - Goethe Business School	4 th 162 ‰	4 th 168 ‰	3 rd 195 ‰
Universität Münster - The Münster School of Business Administration and Economics	5 th 101 ‰	5 th 80 ‰	5 th 88 ‰
3 Palmes of Excellence - Excellent Business School			
Humboldt-Universität zu Berlin - Department of Economics and Business Administration	1 st 175 ‰	2 nd 156 ‰	1 st 177 ‰
ESMT - European School of Management and Technology	2 nd 169 ‰	1 st 176 ‰	2 nd 156 ‰
ESB Business School - Reutlingen University	3 rd 143 ‰	= 4 th 108 ‰	= 5 th 119 ‰
Freie Universität (FU) Berlin School of Business and Economics	4 th 136 ‰	= 6 th 104 ‰	4 th 128 ‰
⁽¹⁾ Universität Hamburg School of Business, Economics and Social Sciences	5 th 130 ‰	1 st 60 ‰	-
FH München University - Department of Business Administration	6 th 117 ‰	= 6 th 104 ‰	3 rd 135 ‰
TU München - TUM School of Management	7 th 114 ‰	3 rd 120 ‰	= 5 th 119 ‰
Universität Freiburg - Faculty of Economics and Behavioral Sciences	8 th 110 ‰	= 9 th 80 ‰	12 th 74 ‰
Universität Bremen - Faculty of Business Studies and Economics	9 th 101 ‰	11 th 76 ‰	-
FH Pforzheim University - Business School	= 10 th 91 ‰	= 4 th 108 ‰	8 th 100 ‰
Universität Göttingen - Faculty of Economic Sciences	= 10 th 91 ‰	= 9 th 80 ‰	= 9 th 84 ‰
LMU München - Munich School of Management	12 th 88 ‰	= 6 th 104 ‰	7 th 112 ‰

⁽¹⁾ The league upward for this institution has been approved in June 2015 by the Eduniversal International Scientific Committee.

School	Vote 2015	Vote 2014	Vote 2013
3 Palms of Excellence - Excellent Business School			
Universität Tübingen - Wirtschafts- und Sozialwissenschaftliche Fakultät	13 th 71 %	= 14 th 60 %	= 9 th 84 %
FH Köln - Faculty of Economics and Business Administration	14 th 65 %	13 th 68 %	-
TH Karlsruhe University - School of Economics and Business Engineering	15 th 62 %	12 th 72 %	11 th 75 %
TU Dresden - Faculty of Business and Economics	= 16 th 58 %	= 19 th 32 %	-
Universität Passau - Faculty of Business Administration and Economics	= 16 th 58 %	21 st 24 %	= 17 th 42 %
RWTH Aachen University - Fakultät für Wirtschaftswissenschaften	= 18 th 55 %	= 14 th 60 %	= 17 th 42 %
Universität Kiel - Faculty of Business, Economics and Social Sciences	= 18 th 55 %	17 th 48 %	15 th 65 %
Universität Erlangen-Nürnberg - Faculty of Business Administration, Economics & Social Sciences	20 th 42 %	= 19 th 32 %	= 13 th 67 %
WFI Ingolstadt School of Management - Katholische University of Eichstaett-Ingolstadt	21 st 39 %	16 th 52 %	20 th 32 %
Universität Regensburg - Faculty of Business Economics & Information Systems	22 nd 32 %	18 th 40 %	= 13 th 67 %
2 Palms of Excellence - Good Business School			
FH Münster University - Faculty of Business Administration	2 nd 65 %	= 2 nd 52 %	= 2 nd 40 %
Universität Bayreuth - Faculty of Law and Economics	= 3 rd 45 %	= 2 nd 52 %	= 2 nd 40 %
European University Viadrina Frankfurt (Oder) Faculty of Business Administration and Economics	= 3 rd 45 %	4 th 48 %	-
Universität Hohenheim - Faculty of Business Economics & Social Sciences	5 th 39 %	5 th 32 %	1 st 44 %
ZU - Zeppelin University	6 th 32 %	6 th 28 %	= 2 nd 40 %

Greece

4 Palms of Excellence - Top Business School			
Athens University of Economics and Business (AUEB)	1 st 269 %	1 st 244 %	1 st 239 %
3 Palms of Excellence - Excellent Business School			
ALBA Graduate Business School	1 st 123 %	1 st 112 %	1 st 119 %
2 Palms of Excellence - Good Business School			
AGSM - Athens Graduate School of Management	1 st 84 %	1 st 76 %	1 st 107 %
The American College of Greece	2 nd 62 %	2 nd 68 %	2 nd 68 %
ICBS - Business School	3 rd 32 %	3 rd 16 %	3 rd 37 %
1 Palme of Excellence - Local Reference			
City Liberal Studies (City College) - Business Administration & Economics Department	1 st 13 %	1 st 24 %	1 st 16 %

Iceland

3 Palms of Excellence - Excellent Business School			
Reykjavik University - School of Business	1 st 260 %	1 st 228 %	1 st 239 %

Ireland

5 Palms of Excellence - Universal Business School			
Trinity College Dublin - Trinity School of Business	1 st 419 %	1 st 404 %	1 st 367 %
University College Dublin - UCD Michael Smurfit School of Business	2 nd 338 %	2 nd 304 %	2 nd 335 %

School	Vote 2015	Vote 2014	Vote 2013
3 Palms of Excellence - Excellent Business School			
Dublin City University - DCU Business School	1 st 250 %	1 st 200 %	1 st 209 %
University of Limerick - Kemmy Business School	2 nd 146 %	2 nd 168 %	2 nd 121 %
Dublin Institute of Technology - College of Business	3 rd 123 %	3 rd 132 %	3 rd 95 %
University College Cork - College of Business and Law	4 th 91 %	4 th 72 %	4 th 77 %
2 Palms of Excellence - Good Business School			
⁽¹⁾ National University of Ireland - Galway - J.E. Cairnes School of Business and Economics	1 st 101 %	-	-
IMI Irish Management Institute	1 st 55 %	1 st 56 %	1 st 40 %

Italy

5 Palms of Excellence - Universal Business School			
SDA Bocconi School of Management	1 st 558 %	1 st 540 %	1 st 486 %
4 Palms of Excellence - Top Business School			
University of Bologna - Bologna Business School	1 st 302 %	3 rd 160 %	3 rd 147 %
MIP Politecnico di Milano School of Management	2 nd 172 %	1 st 192 %	2 nd 160 %
Università di Roma 1 «La Sapienza» - Facoltà di Economia	3 rd 156 %	2 nd 176 %	1 st 161 %
MIB School of Management	4 th 140 %	= 4 th 136 %	4 th 144 %
LUISS Business School	5 th 136 %	= 4 th 136 %	5 th 121 %
3 Palms of Excellence - Excellent Business School			
Università Cattolica del Sacro Cuore - Facoltà di Economia	1 st 114 %	1 st 96 %	1 st 96 %
Università degli Studi di Firenze - Facoltà di Economia	2 nd 91 %	2 nd 92 %	3 rd 75 %
Università degli Studi di Torino - Facoltà di Economia	3 rd 88 %	= 4 th 68 %	4 th 70 %
Università degli Studi di Siena - Facoltà di Economia «Richard M. Goodwin»	4 th 68 %	= 4 th 68 %	5 th 58 %
2 Palms - Good Business School			
ESE - European School of Economics	1 st 84 %	1 st 80 %	1 st 77 %
ISIDA School of Business	2 nd 49 %	3 rd 40 %	= 2 nd 51 %
Università degli Studi di Palermo - Facoltà di Economia	= 3 rd 36 %	2 nd 56 %	4 th 40 %
John Cabot University - Department of Business Administration	= 3 rd 36 %	4 th 32 %	= 2 nd 51 %
Fondazione ISTUD per la cultura d'impresa e di gestione	5 th 16 %	5 th 16 %	6 th 19 %
1 Palme of Excellence - Local Reference			
ISTAO Istituto Adriano Olivetti di studi per la gestione dell'economia e delle aziende	1 st 16 %	1 st 24 %	2 nd 16 %

Luxembourg

2 Palms of Excellence - Good Business School			
Sacred Heart University Luxembourg - John F. Welch College of Business	1 st 143 %	1 st 104 %	1 st 142 %

Malta

3 Palms of Excellence - Excellent Business School			
University of Malta - L-Università ta' Malta - Faculty of Economics, Management & Accountancy	1 st 94 %	1 st 92 %	1 st 128 %

⁽¹⁾ New institution approved by the Eduniversal International Scientific Committee to enter in the 2015 Eduniversal Official Selection.

School	Vote 2015	Vote 2014	Vote 2013
Monaco			
4 Palmes of Excellence - Top Business School			
International University of Monaco (IUM)	1 st 136 ‰	1 st 100 ‰	1 st 137 ‰
Netherlands			
5 Palmes of Excellence - Universal Business School			
Rotterdam School of Management, Erasmus University	1 st 584 ‰	1 st 576 ‰	1 st 560 ‰
Maastricht University School of Business and Economics	2 nd 312 ‰	2 nd 336 ‰	2 nd 321 ‰
4 Palmes of Excellence - Top Business School			
Maastricht School of Management (MSM)	1 st 364 ‰	1 st 368 ‰	1 st 330 ‰
University of Amsterdam - Amsterdam Business School	2 nd 318 ‰	2 nd 288 ‰	2 nd 304 ‰
University of Groningen - Faculty of Economics and Business	3 rd 253 ‰	3 rd 216 ‰	4 th 205 ‰
Nyenrode Business University	4 th 143 ‰	4 th 164 ‰	5 th 149 ‰
TIAS School for Business and Society - Tilburg University	5 th 117 ‰	5 th 148 ‰	3 rd 253 ‰
3 Palmes of Excellence - Excellent Business School			
Tilburg University - Tilburg School of Economics and Management	1 st 266 ‰	1 st 220 ‰	- -
HES School of Economics and Management	2 nd 101 ‰	2 nd 96 ‰	1 st 121 ‰
2 Palmes of Excellence - Good Business School			
Open University of the Netherlands - Faculty of Management Sciences, School of Management	1 st 39 ‰	1 st 64 ‰	1 st 54 ‰
(1) University of Twente - TSM Business School	2 nd 16 ‰	4 th 24 ‰	3 rd 42 ‰
Norway			
5 Palmes of Excellence - Universal Business School			
BI Norwegian Business School	1 st 416 ‰	1 st 404 ‰	1 st 388 ‰
4 Palmes of Excellence - Top Business School			
NHH - Norwegian School of Economics and Business Administration, NHH - Norges Handelshøyskole	1 st 88 ‰	1 st 112 ‰	1 st 96 ‰
Portugal			
5 Palmes of Excellence - Universal Business School			
Universidade Nova de Lisboa - Nova School of Business and Economics	1 st 266 ‰	1 st 268 ‰	1 st 258 ‰
4 Palmes of Excellence - Top Business School			
Universidade Católica Portuguesa - Católica-Lisbon School of Business & Economics	1 st 250 ‰	1 st 248 ‰	1 st 196 ‰
3 Palmes of Excellence - Excellent Business School			
University of Porto - School of Economics and Management and Porto Business School	1 st 188 ‰	1 st 204 ‰	2 nd 119 ‰
ISCTE Business School - University Institute of Lisbon	2 nd 136 ‰	2 nd 160 ‰	1 st 137 ‰
ISEG Lisboa - School of Economics and Management, Universidade de Lisboa	3 rd 101 ‰	3 rd 88 ‰	3 rd 74 ‰
2 Palmes of Excellence - Good Business School			
(2) AESE Business School	1 st -	-	-

(1) The league downward for this institution has been approved in June 2015 by the Eduniversal International Scientific Committee.
 (2) New institution approved by the Eduniversal International Scientific Committee to enter in the 2015 Eduniversal Official Selection.

School	Vote 2015	Vote 2014	Vote 2013
Spain			
5 Palmes of Excellence - Universal Business School			
ESADE Business School	1 st 497 ‰	1 st 508 ‰	1 st 502 ‰
IE Business School	2 nd 419 ‰	3 rd 396 ‰	3 rd 330 ‰
IESE Business School	3 rd 416 ‰	2 nd 464 ‰	2 nd 414 ‰
4 Palmes of Excellence - Top Business School			
EADA Business School	1 st 205 ‰	2 nd 188 ‰	2 nd 163 ‰
Universidad Carlos III de Madrid - Departamento de Economía de la Empresa	2 nd 185 ‰	1 st 196 ‰	1 st 172 ‰
Universidad de Navarra - School of Business and Economics	3 rd 169 ‰	3 rd 152 ‰	6 th 116 ‰
Universidad Complutense Madrid - Facultad de Ciencias Economicas y Empresariales	4 th 130 ‰	4 th 148 ‰	3 rd 146 ‰
Deusto Business School - Universidad de Deusto - Campus San Sebastian y Bilbao	5 th 107 ‰	5 th 136 ‰	5 th 119 ‰
3 Palmes of Excellence - Excellent Business School			
Pompeu Fabra University - IDEC & Barcelona School of Management	1 st 143 ‰	1 st 124 ‰	1 st 118 ‰
(1) Universitat Autònoma de Barcelona - Department of Business	2 nd 120 ‰	-	-
Universidad Pontificia Comillas de Madrid - Facultad de Ciencias Economicas y Empresariales ICAE	3 rd 107 ‰	= 2 nd 100 ‰	2 nd 105 ‰
EAE Business School	4 th 58 ‰	6 th 44 ‰	5 th 67 ‰
ESIC Business & Marketing School	= 5 th 52 ‰	= 2 nd 100 ‰	4 th 84 ‰
IEDE Business School - Escuela de Postgrado Universidad Europea	= 5 th 52 ‰	5 th 56 ‰	3 rd 88 ‰
EOI Business School	7 th 49 ‰	4 th 64 ‰	7 th 39 ‰
BES La Salle - Ramon Llull University - International Business School	8 th 32 ‰	7 th 32 ‰	6 th 49 ‰
2 Palmes of Excellence - Good Business School			
Fundesem Business School	1 st 26 ‰	2 nd 32 ‰	1 st 44 ‰
(2) Instituto Internacional San Telmo	= 2 nd 19 ‰	8 th 20 ‰	8 th 19 ‰
ESEUNE Business School	= 2 nd 19 ‰	1 st 40 ‰	= 2 nd 30 ‰
1 Palme of Excellence - Local Reference			
(2) Escuela de Negocios A Fundación	1 st 16 ‰	4 th 12 ‰	4 th 18 ‰
Foro Europeo Escuela de Negocios de Navarra	2 nd 13 ‰	1 st 36 ‰	1 st 18 ‰
Sweden			
5 Palmes of Excellence - Universal Business School			
Stockholm School of Economics	1 st 435 ‰	1 st 424 ‰	1 st 426 ‰
4 Palmes of Excellence - Top Business School			
Stockholm University - Stockholm Business School	1 st 367 ‰	1 st 332 ‰	1 st 318 ‰
University of Gothenburg School of Business, Economics and Law	2 nd 282 ‰	2 nd 268 ‰	2 nd 216 ‰
Uppsala University - Department of Economics	3 rd 256 ‰	3 rd 248 ‰	3 rd 207 ‰
LUSEM - Lund University School of Economics & Management	4 th 133 ‰	4 th 116 ‰	4 th 133 ‰
3 Palmes of Excellence - Excellent Business School			
Jönköping International Business School	1 st 208 ‰	1 st 200 ‰	1 st 181 ‰
Umeå University - Umeå School of Business and Economics	2 nd 78 ‰	2 nd 104 ‰	3 rd 84 ‰
Linköpings Universitet - IEI - Division of Business Administration	3 rd 55 ‰	3 rd 28 ‰	2 nd 88 ‰

(1) New institution approved by the Eduniversal International Scientific Committee to enter in the 2015 Eduniversal Official Selection.
 (2) The league downward for this institution has been approved in June 2015 by the Eduniversal International Scientific Committee.

School	Vote 2015	Vote 2014	Vote 2013
Switzerland			
5 Palmes of Excellence - Universal Business School			
IMD - Business School	1 st 523 ‰	1 st 540 ‰	1 st 465 ‰
Universität St. Gallen - School of Management	2 nd 435 ‰	2 nd 392 ‰	2 nd 349 ‰
Université de Lausanne - HEC Lausanne	3 rd 312 ‰	3 rd 304 ‰	3 rd 296 ‰
4 Palmes of Excellence - Top Business School			
Université de Genève - HEC Genève	1 st 234 ‰	1 st 196 ‰	1 st 196 ‰
3 Palmes of Excellence - Excellent Business School			
⁽¹⁾ University of Zurich - Faculty of Economics, Business Administration and Information Technology	1 st 201 ‰	-	-
ETH Zurich - Swiss Federal Institute of Technology Department of Management and Social Sciences	2 nd 149 ‰	1 st 136 ‰	1 st 172 ‰
Lorange Institute of Business Zurich	3 rd 123 ‰	2 nd 100 ‰	3 rd 100 ‰
International University in Geneva (IUG)	4 th 91 ‰	3 rd 80 ‰	2 nd 112 ‰
2 Palmes of Excellence - Good Business School			
⁽²⁾ IIMT - International Institute of Management in Technology - University of Fribourg	1 st 29 ‰	4 th 24 ‰	4 th 53 ‰

United Kingdom

School	Vote 2015	Vote 2014	Vote 2013
5 Palmes of Excellence - Universal Business School			
London Business School	1 st 646 ‰	1 st 668 ‰	1 st 628 ‰
LSE - London School of Economics and Political Science	2 nd 516 ‰	= 3 rd 448 ‰	4 th 425 ‰
University of Warwick - Warwick Business School	3 rd 487 ‰	= 3 rd 448 ‰	5 th 382 ‰
University of Cambridge - Judge Business School	4 th 481 ‰	5 th 420 ‰	3 rd 451 ‰
University of Oxford - Said Business School	5 th 461 ‰	2 nd 464 ‰	2 nd 454 ‰
The University of Manchester - Manchester Business School	6 th 351 ‰	7 th 320 ‰	6 th 358 ‰
Cranfield University - Cranfield School of Management	7 th 321 ‰	6 th 344 ‰	7 th 321 ‰
4 Palmes of Excellence - Top Business School			
Imperial College London - Tanaka Business School	1 st 325 ‰	= 1 st 264 ‰	1 st 261 ‰
Lancaster University Management School	2 nd 282 ‰	3 rd 244 ‰	= 3 rd 218 ‰
University of Edinburgh - Business School	3 rd 276 ‰	4 th 232 ‰	2 nd 242 ‰
Aston University - Aston Business School	4 th 247 ‰	= 1 st 264 ‰	= 3 rd 218 ‰
University of Strathclyde - Strathclyde Business School	5 th 240 ‰	5 th 228 ‰	5 th 214 ‰
City University - Cass Business School	6 th 224 ‰	8 th 200 ‰	6 th 212 ‰
University of Leeds - Leeds University Business School	7 th 221 ‰	= 10 th 168 ‰	= 8 th 172 ‰
Durham University Business School	8 th 218 ‰	9 th 184 ‰	15 th 149 ‰
The University of Nottingham - Nottingham University Business School	9 th 214 ‰	7 th 204 ‰	7 th 193 ‰
University of Birmingham - Birmingham Business School	10 th 201 ‰	= 13 th 152 ‰	= 8 th 172 ‰
University of Bath - School of Management	11 th 195 ‰	12 th 164 ‰	11 th 165 ‰
Ashridge Business School	12 th 192 ‰	6 th 208 ‰	12 th 161 ‰
University of Glasgow - Adam Smith Business School	13 th 185 ‰	= 13 th 152 ‰	13 th 156 ‰
Henley Business School	14 th 162 ‰	= 10 th 168 ‰	10 th 170 ‰
Bradford University - School of Management	15 th 140 ‰	15 th 144 ‰	14 th 149 ‰

⁽¹⁾ New institution approved by the Eduniversal International Scientific Committee to enter in the 2015 Eduniversal Official Selection.⁽²⁾ The league downward for this institution has been approved in June 2015 by the Eduniversal International Scientific Committee.

School	Vote 2015	Vote 2014	Vote 2013
3 Palmes of Excellence - Excellent Business School			
Cardiff Metropolitan University - Cardiff Business School	1 st 182 ‰	4 th 132 ‰	2 nd 161 ‰
Newcastle University Business School	2 nd 175 ‰	3 rd 156 ‰	4 th 133 ‰
Oxford Brookes University - Business School	3 rd 153 ‰	= 1 st 160 ‰	1 st 196 ‰
Nottingham Trent University - Nottingham Business School	4 th 143 ‰	= 1 st 160 ‰	3 rd 147 ‰
Open University - Business School	5 th 133 ‰	6 th 108 ‰	6 th 107 ‰
University of Exeter - Business School	= 6 th 123 ‰	5 th 120 ‰	5 th 111 ‰
⁽¹⁾ University of Sheffield Management School	= 6 th 123 ‰	-	-
Sheffield Hallam University - Sheffield Business School	8 th 114 ‰	= 7 th 104 ‰	7 th 102 ‰
Manchester Metropolitan University - Business School	9 th 107 ‰	11 th 84 ‰	9 th 89 ‰
University of St. Andrews - School of Management	= 10 th 101 ‰	= 7 th 104 ‰	8 th 100 ‰
University of Hull - Business School	= 10 th 101 ‰	10 th 92 ‰	12 th 77 ‰
University of Southampton - Southampton Business School	12 th 91 ‰	= 21 st 40 ‰	14 th 72 ‰
Northumbria University - Newcastle Business School	= 13 th 78 ‰	= 14 th 64 ‰	21 st 44 ‰
Loughborough University - Business School	= 13 th 78 ‰	= 16 th 56 ‰	17 th 67 ‰
Kingston University London - Kingston Business School	= 15 th 68 ‰	12 th 76 ‰	13 th 74 ‰
University of Surrey - Surrey Business School	= 15 th 68 ‰	13 th 68 ‰	15 th 70 ‰
Edinburg Napier Business School	= 17 th 65 ‰	9 th 96 ‰	10 th 88 ‰
Brunel University - Brunel Business School	= 17 th 65 ‰	= 14 th 64 ‰	11 th 84 ‰
Heriot-Watt University - Edinburg Business School	= 17 th 65 ‰	20 th 44 ‰	18 th 65 ‰
Middlesex University Business School	= 20 th 55 ‰	= 16 th 56 ‰	= 23 rd 42 ‰
Coventry University - Coventry Business School	= 20 th 55 ‰	19 th 52 ‰	19 th 58 ‰
University of Wales Institute - Cardiff School of Management	22 nd 45 ‰	= 16 th 56 ‰	16 th 68 ‰
Plymouth University - The Plymouth Business School	23 rd 39 ‰	= 21 st 40 ‰	= 23 rd 42 ‰
Aberystwyth University - School of Management and Business	24 th 36 ‰	24 th 28 ‰	25 th 28 ‰
De Montfort University - Leicester Business School	25 th 19 ‰	25 th 20 ‰	26 th 26 ‰
University of the West of England - Bristol Business School	26 th 16 ‰	= 21 st 40 ‰	22 nd 33 ‰
2 Palmes of Excellence - Good Business School			
⁽²⁾ Robert Gordon University - Aberdeen Business School	1 st 26 ‰	26 th 12 ‰	20 th 46 ‰
University of Gloucestershire - School of Business and Management	2 nd 10 ‰	1 st 20 ‰	1 st 21 ‰

⁽¹⁾ New institution approved by the Eduniversal International Scientific Committee to enter in the 2015 Eduniversal Official Selection.⁽²⁾ The league downward for this institution has been approved in June 2015 by the Eduniversal International Scientific Committee.



20 ter rue de Bezons

92400 Courbevoie | FRANCE

T : (+33) 1 48 57 57 59 | F : (+33) 9 72 24 96 98

www.eduniversal-ranking.com