

# Eduniversal World Convention 2017



## The Start –up Model as a Key Element for Programmes

Prof. Irina Sennikova

Rector of RISEBA University of Business, Arts and Technology, Latvia



eduniversal

8-12 November 2017  
Dubai, United Arab Emirates



eduniversal



RISEBA  
UNIVERSITY

25

BUSINESS  
MEETS  
ART

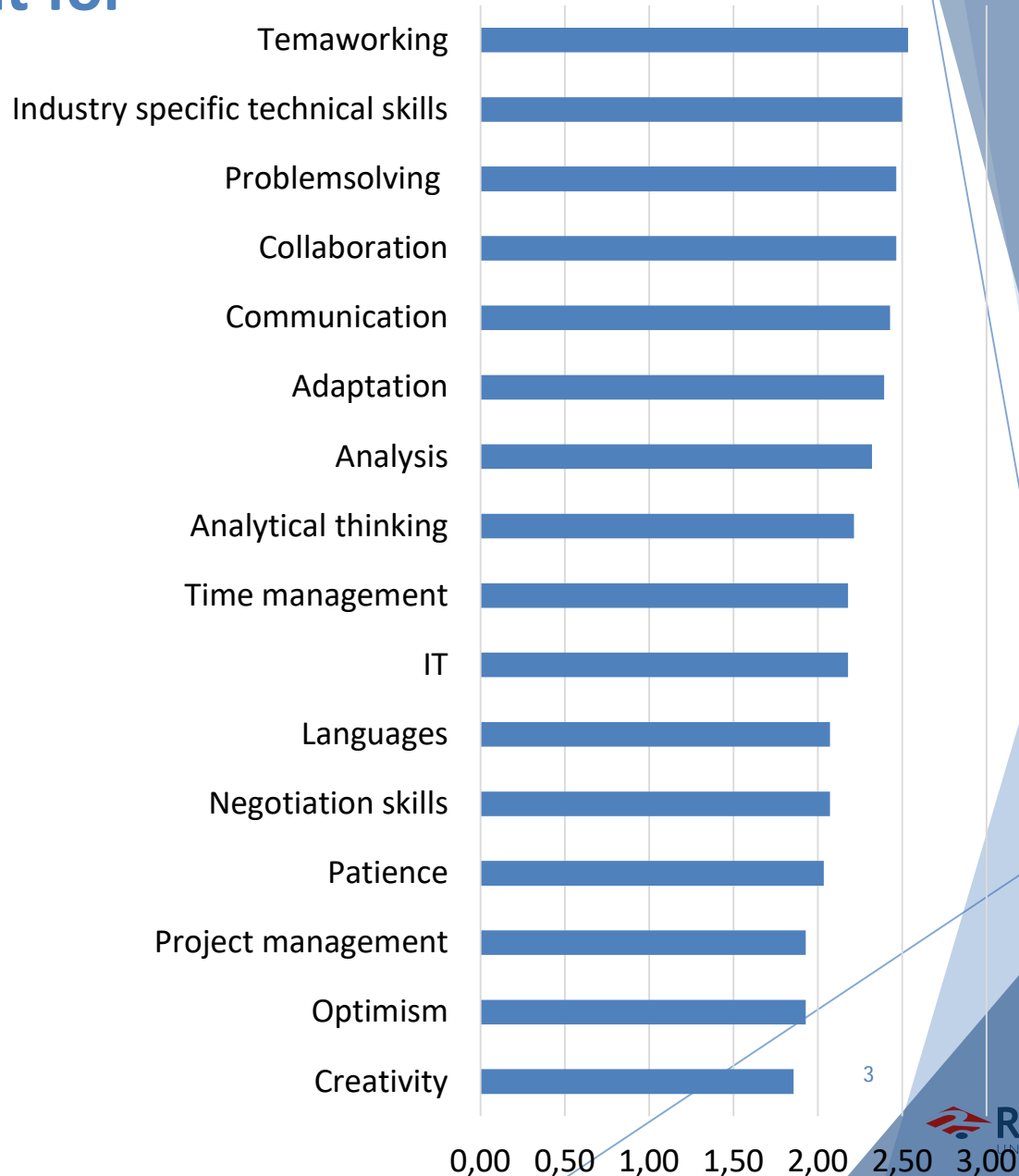
# Generational differences – findings from the research on Management and Leadership Development Needs in Dynamic Societies

- ▶ Lack of social skills, different working patterns, attitude towards life, inability to keep attention
- ▶ “Focused on self-searching, they would rather enjoy start-up environment, but don’t understand the order of a large organisation”



# Skills important for job applicants

- ▶ respondents were asked to evaluate the importance they place on skills for new job applicants.



# RISEBA University of Business, Arts and Technology



*The Place Where  
Business Meet Art*

1992/2006

2007/2010

2011/2017

**Bachelor's:**

Business studies (LV, RU),

European Business (EN),

E-Business (LV, RU);

Business Psychology (LV, RU)

Business in Digital Environment (LU, RU)



**Master's:**

MBA (LV, RU, EN)

Business Management (LV, RU),

HRM (LV, EN)

International Business (En), Project Management (LV, EN),

Health Management (EN, LV)

International Finance (EN, LV)

Business Psychology and Supervision (LV, RU)

Strategic Business Management (LV, RU)



PhD in Management (LV)



Bachelor's: PR and Advertising Management (LV, RU)

Audiovisual Media Arts ( TV producer, director,  
screenwriter, cameramen ) (LV, RU, EN)

Master's: Public Relations Management (LV,)

Audiovisual Media Arts (EN)

-Performing Arts



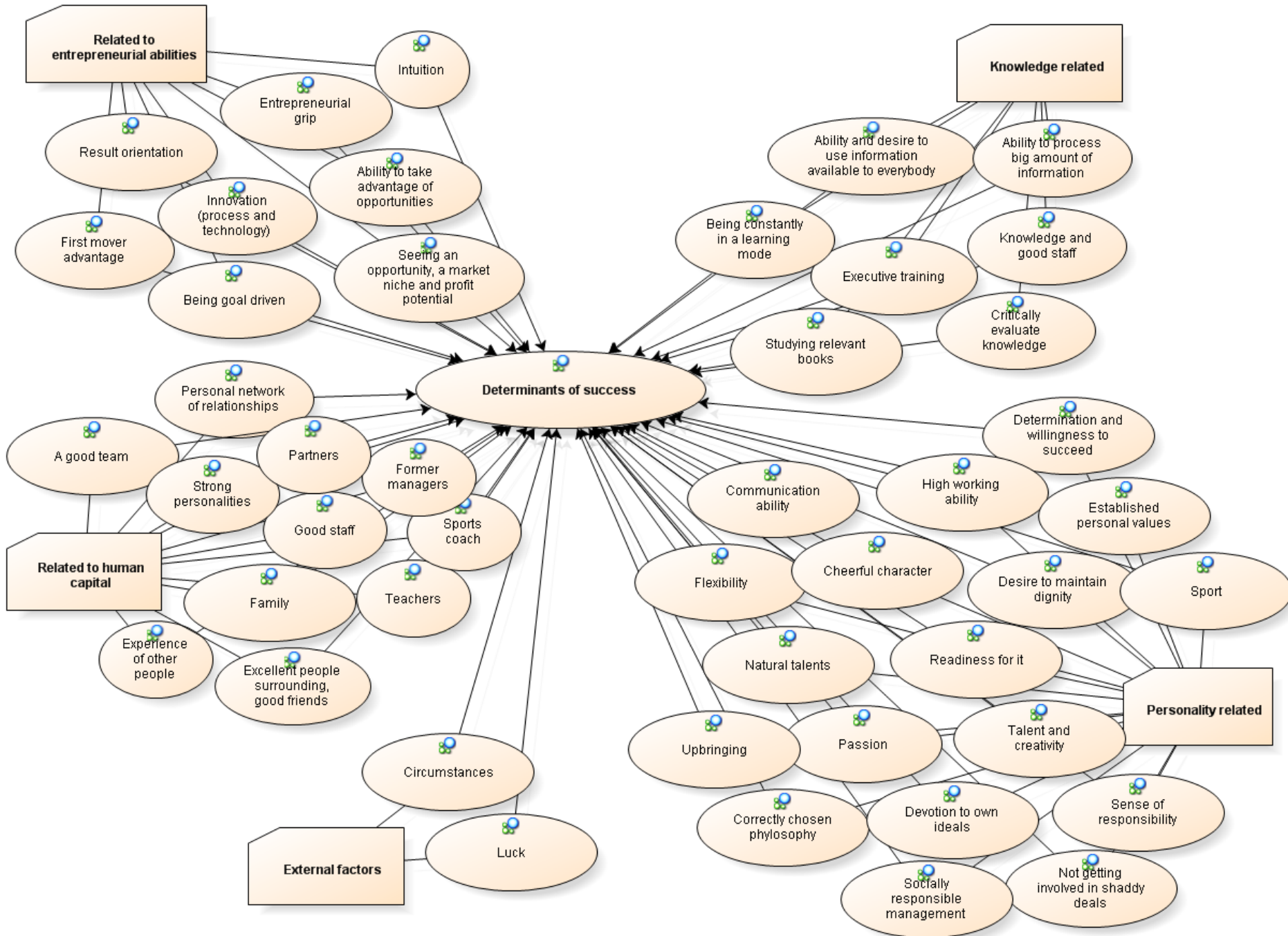
Bachelor's :Architecture (EN)

Master's: Architecture (EN)

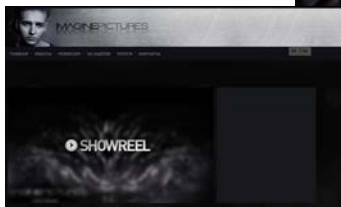
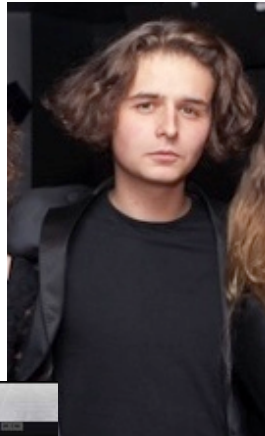


25

BUSINESS  
MEETS  
ART  
5



# Life style entrepreneurship vs serial entrepreneurship



10 Latvian  
startups to watch  
in 2017

# Giraffe 360 Virtual Reality Tours



# RISEBA

CREATIVE BUSINESS INCUBATOR



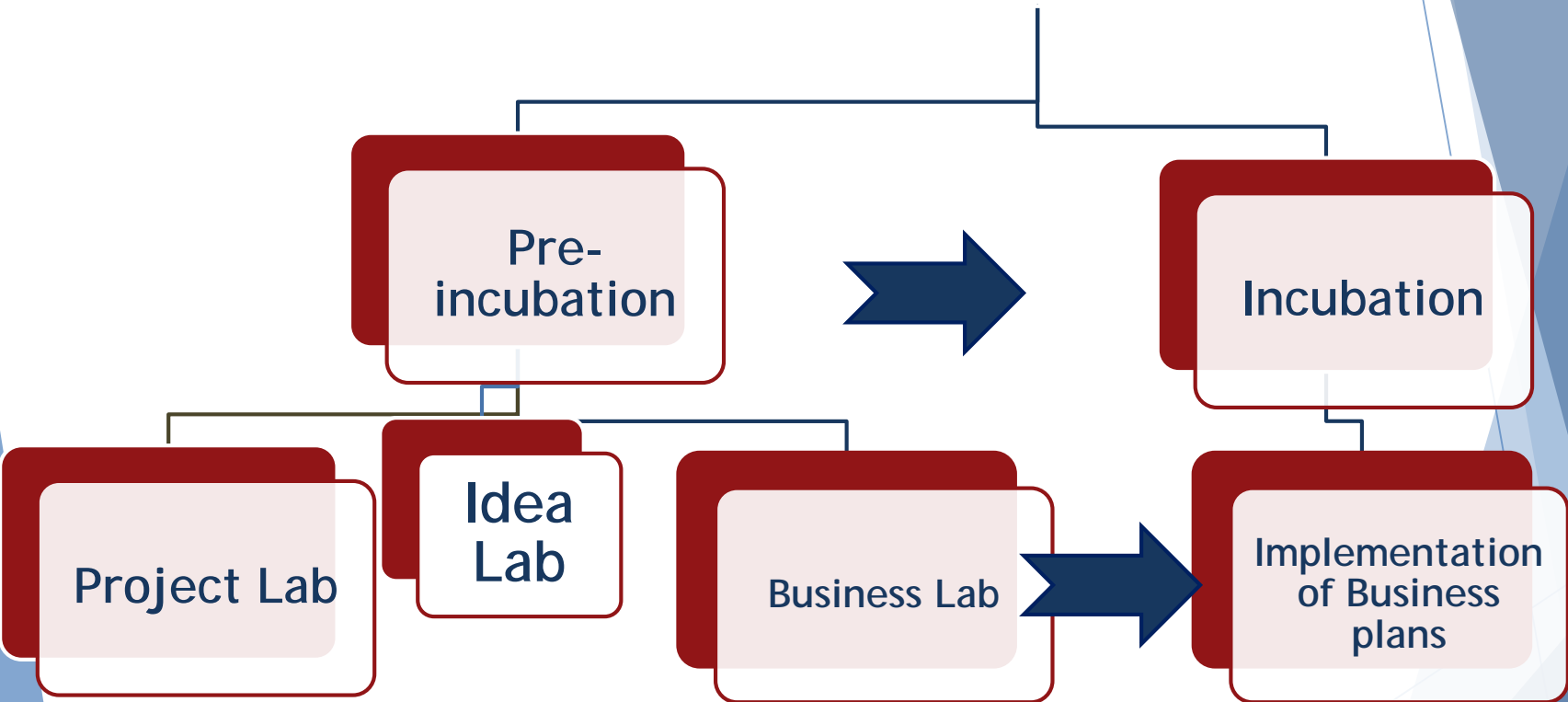
KOKA



PULKSTENI



# Integrating incubation activities into the study process



eduniversal

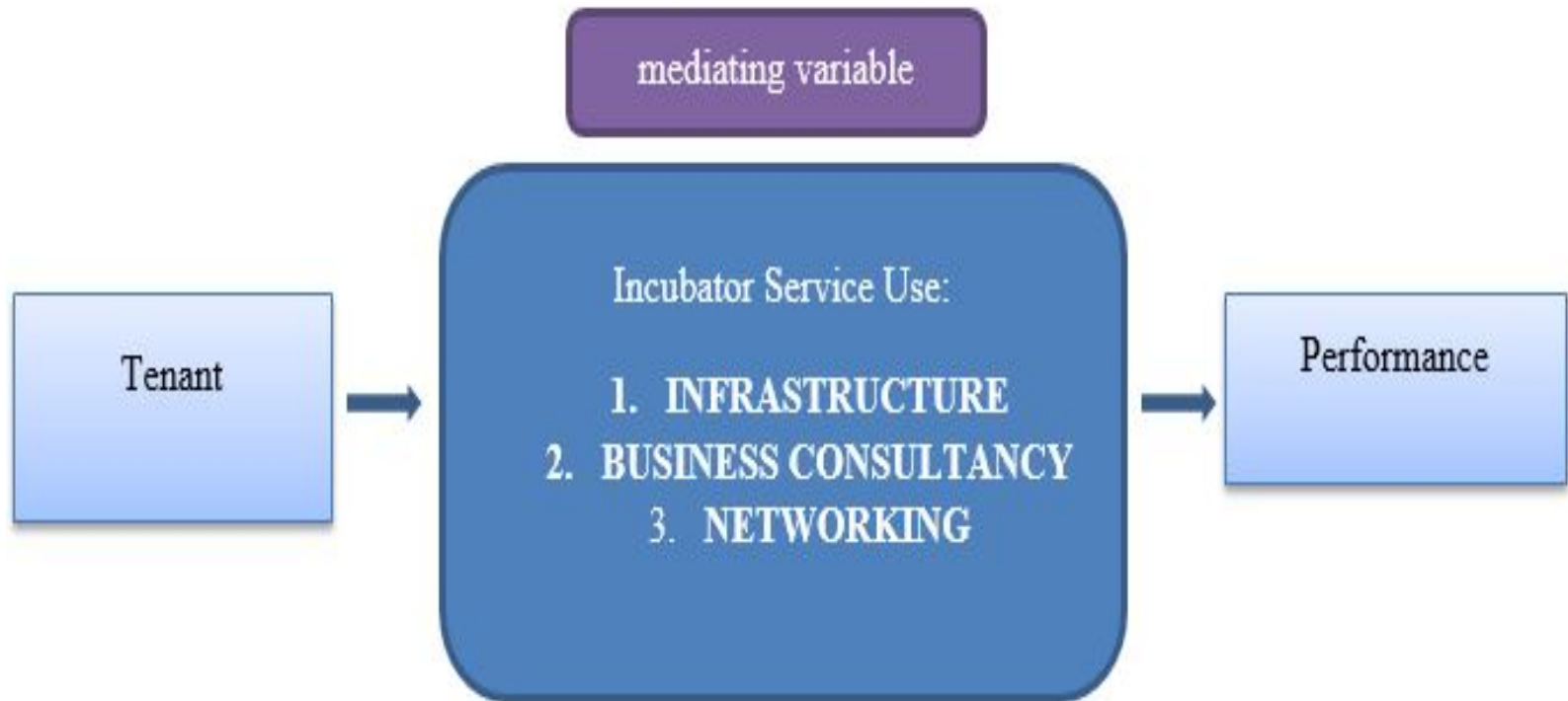


RISEBA  
UNIVERSITY

25

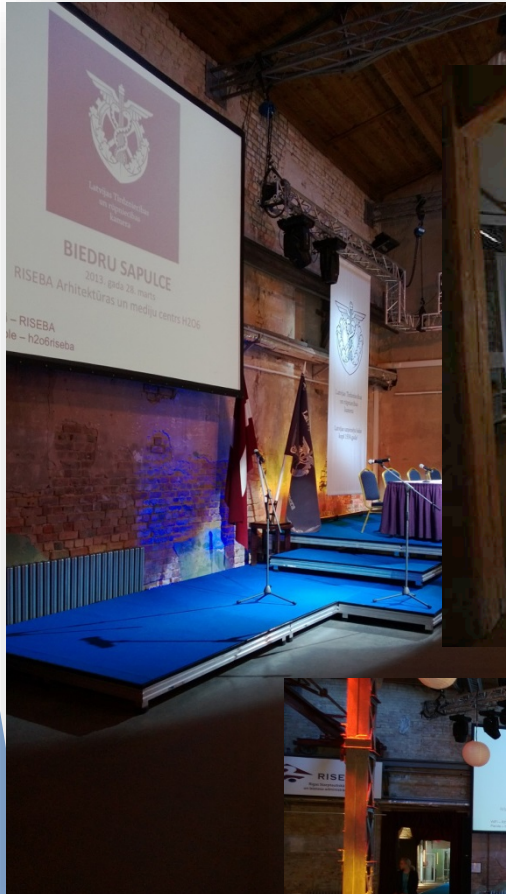
BUSINESS  
MEETS  
ART

# UNIVERSITY BUSINESS INCUBATORS' IMPACT ON TENANTS' PERFORMANCE



(I.Cirule, 2017)

# Creating entrepreneurial culture



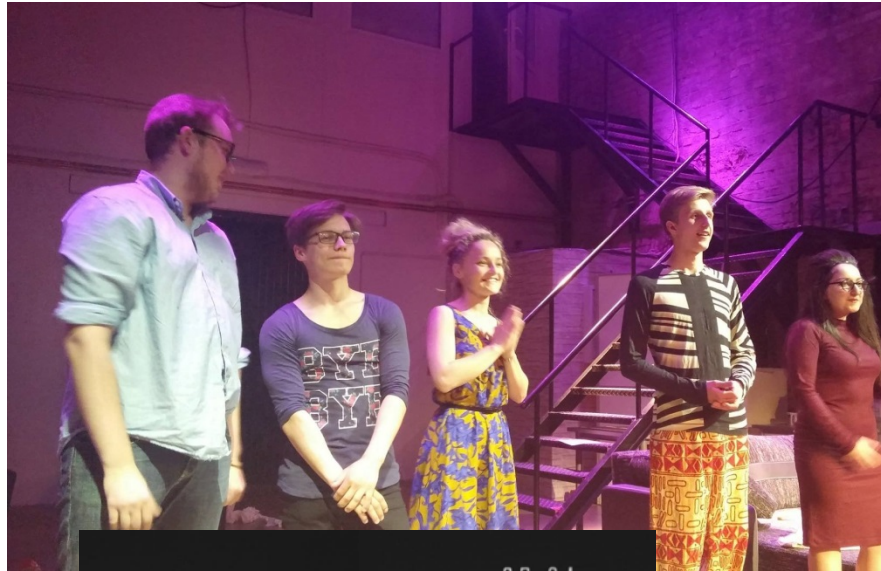








# RISEBA Repertory Theatre



# The missing link between the corporate world and educational institutions

- ▶ Gap between theory and practice

“Educational institutions should know issues in corporations. Trainings sometimes are difficult when delivered by purely academic trainers based on theory only. Our employees always question the suitability of theories. Trainers should have eaten the salt of business”

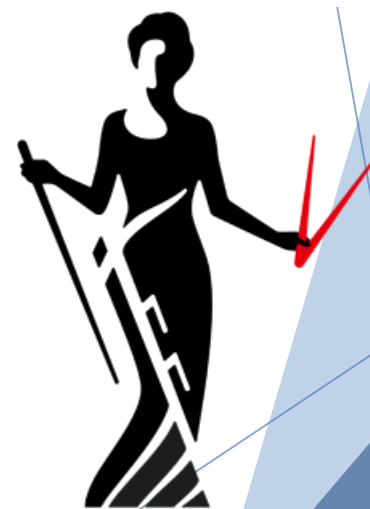
- ▶ “Too much emphasis on facts acquisition, but should rather focus on problem solving, critical analysis, argumentation, teamwork, personal development”

- ▶ Providing graduates with wrong expectations and wrong motivation

- ▶ “Teaching folklore in business schools”

# Bachelor in Start up Economics and Finance –in development

To develop specialists able to attract financing for enterprises with a special focus on start-ups and to prepare the necessary financial reports and analysis on financial situation



ICAEW

LATBAN  
LATVIAN BUSINESS ANGEL NETWORK

Cambridge English Qualifications

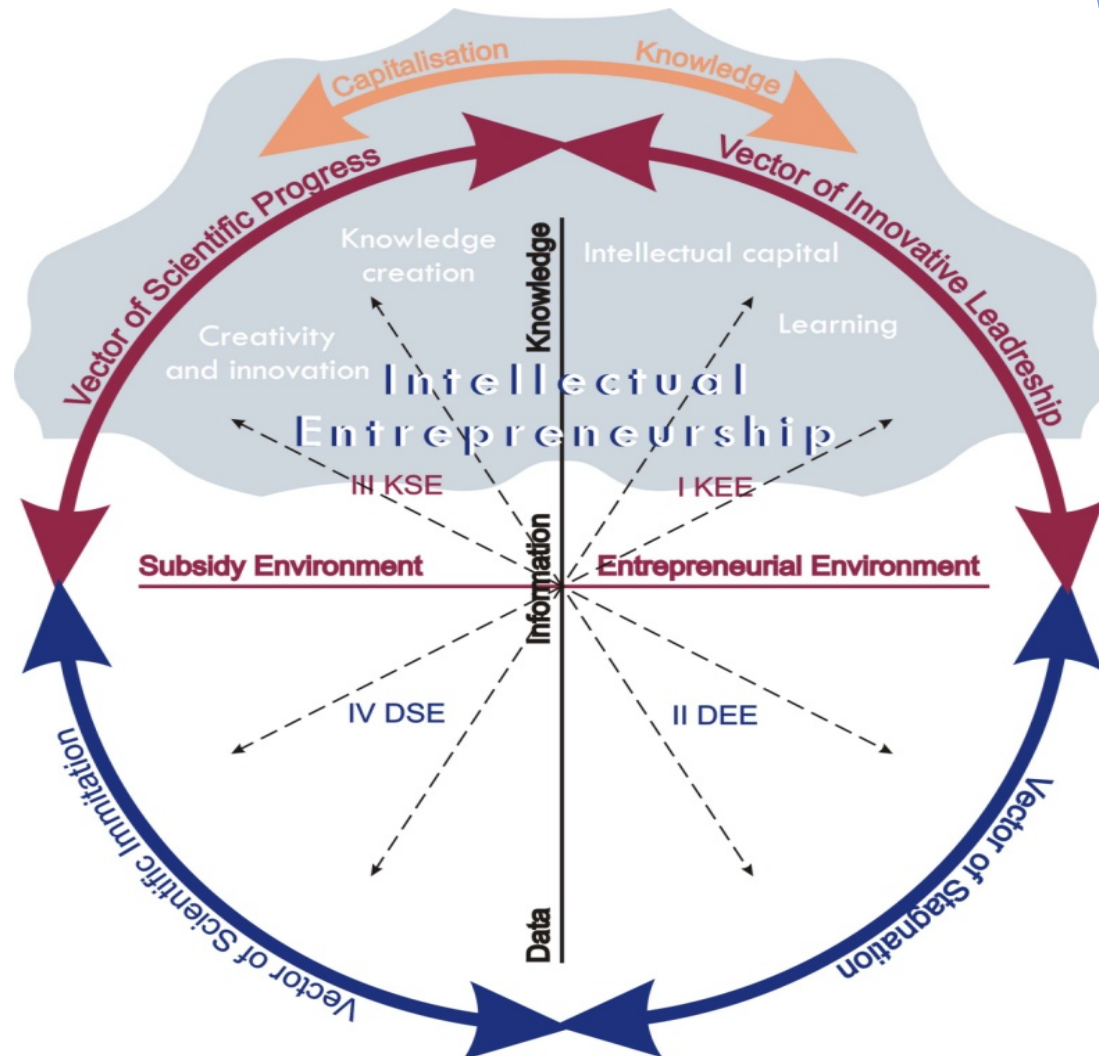
eduniversal

RISEBA  
UNIVERSITY

25

BUSINESS  
MEETS  
ART

# Intellectual Entrepreneurship as capitalisation of knowledge in innovative environment



Ceļš uz starptautisku karjeru



 **RISEBA**  
STUDENT COUNCIL

 **RISEBA**  
UNIVERSITY

25

BUSINESS  
MEETS  
ART